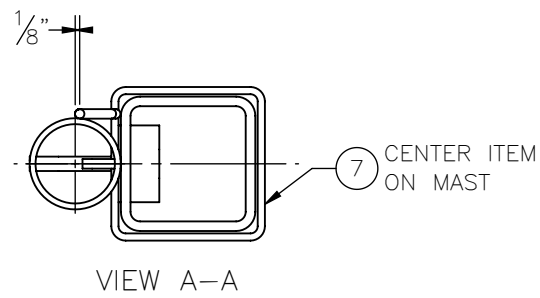
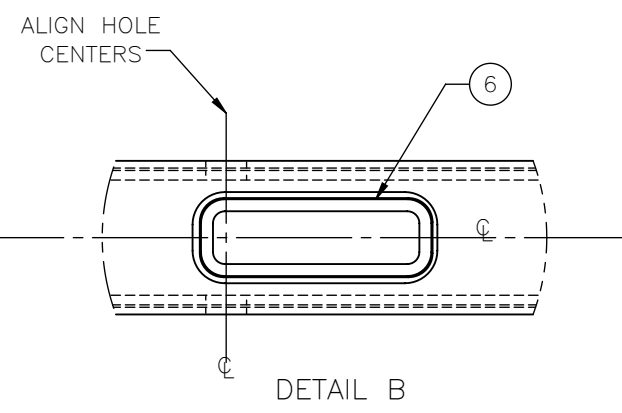
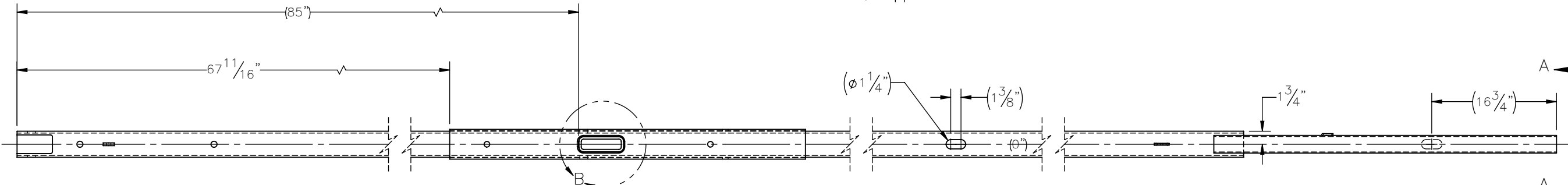
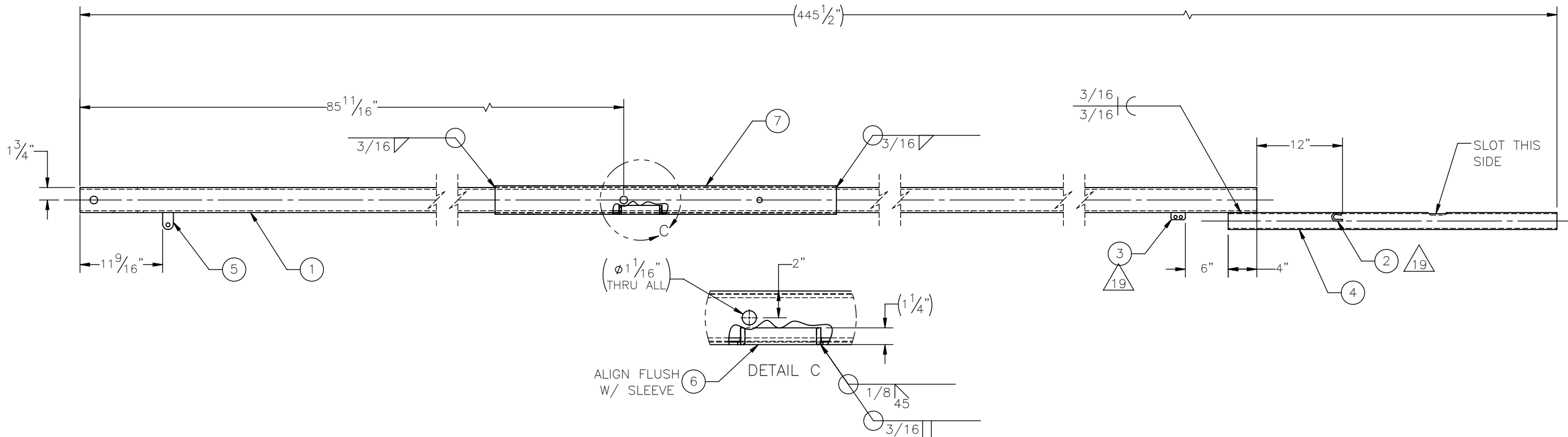


THE INFORMATION CONTAINED IN THIS DRAWING IS THE SOLE PROPERTY OF ELECTRO MECHANICAL INDUSTRIES, INC. ANY REPRODUCTION IN PART OR WHOLE WITHOUT THE WRITTEN PERMISSION OF ELECTRO MECHANICAL IND., IS PROHIBITED.


REVISIONS					
REV.	DCN #	DESCRIPTION	DATE	BY	APPROVED
19	01148	P-000-514 WAS 400-004-3050-0205, P-005-503 WAS 400-004-3050-205	7/12/2022	MJP	JPB



- NOTES:
UNLESS OTHERWISE SPECIFIED,
1. ALL WELDING PER AWS D1.1, FCAW, E7XT-1 AND GMAW, ER70S-6 ELECTRODES.
 2. SQUARENESS OF WELDED COMPONENTS TO BE WITHIN +/- 1/16".
 3. ALL WELDS 3/16" FILLET OR SEAM WELDS ALL AROUND AS APPLICABLE PER JOINT.
 4. ALL CAPTIVE TUBES MUST HAVE MIN. TWO WEEP HOLES (ONE UPPER, ONE LOWER) 7/16" DIA.
 5. GALVANIZE PER ASTM A123.

ITEM NO.	QTY REQD	PART NUMBER	DESCRIPTION	LENGTH	WEIGHT
1	1	400-004-3050-0201	SQUARE MAST	403.5	351.13
2	1	P-005-503	CABLE GRIP HOOK		0.1
3	1	P-000-514	GROUND TAB		0.12
4	1	400-004-3050-0206	MOUNT SHAFT		13.87
5	1	400-004-3050-0207	HASP		0.33
6	1	400-004-3050-0211	REINFORCEMENT INSERT		1.5
7	1	P-000-001	SLEEVE UPGRADE	47 3/4"	36.48

SURFACE FINISH <input checked="" type="checkbox"/> UNLESS OTHERWISE SPECIFIED		UNLESS OTHERWISE SPECIFIED DIMENSIONS ARE IN INCHES		APPROVALS		DATE	
MATERIAL SEE PARTS LIST		TOLERANCES .0 ±.06 .00 ±.01 .000 ±.005		DRAWN C. SANCHEZ		3.23.10	
THIRD ANGLE PROJECTION		FRACTIONS ± 1/16		CHECKED CG		3.31.10	
NEXT ASSY		ANGLES ±.25°		ENGINEER/DESIGNER VGD		6.27.14	
USED ON		HOLES: DRILLED OR PUNCHED ±1/32		PRODUCTION JKS		1.13.11	
APPLICATIONS		BURNED ±1/32		SCALE: 1:15		WEIGHT: 403.50 lbs.	



ELECTRO MECHANICAL INDUSTRIES, INC.
11250 NEESESHAW DRIVE
HOUSTON, TEXAS 77065
1-800-453-0050

TITLE: **MAST ASSEMBLY**

SIZE: **B** DRAWING NO.: **400-004-3050-0200** REV: **19**

SHEET 1 OF 1