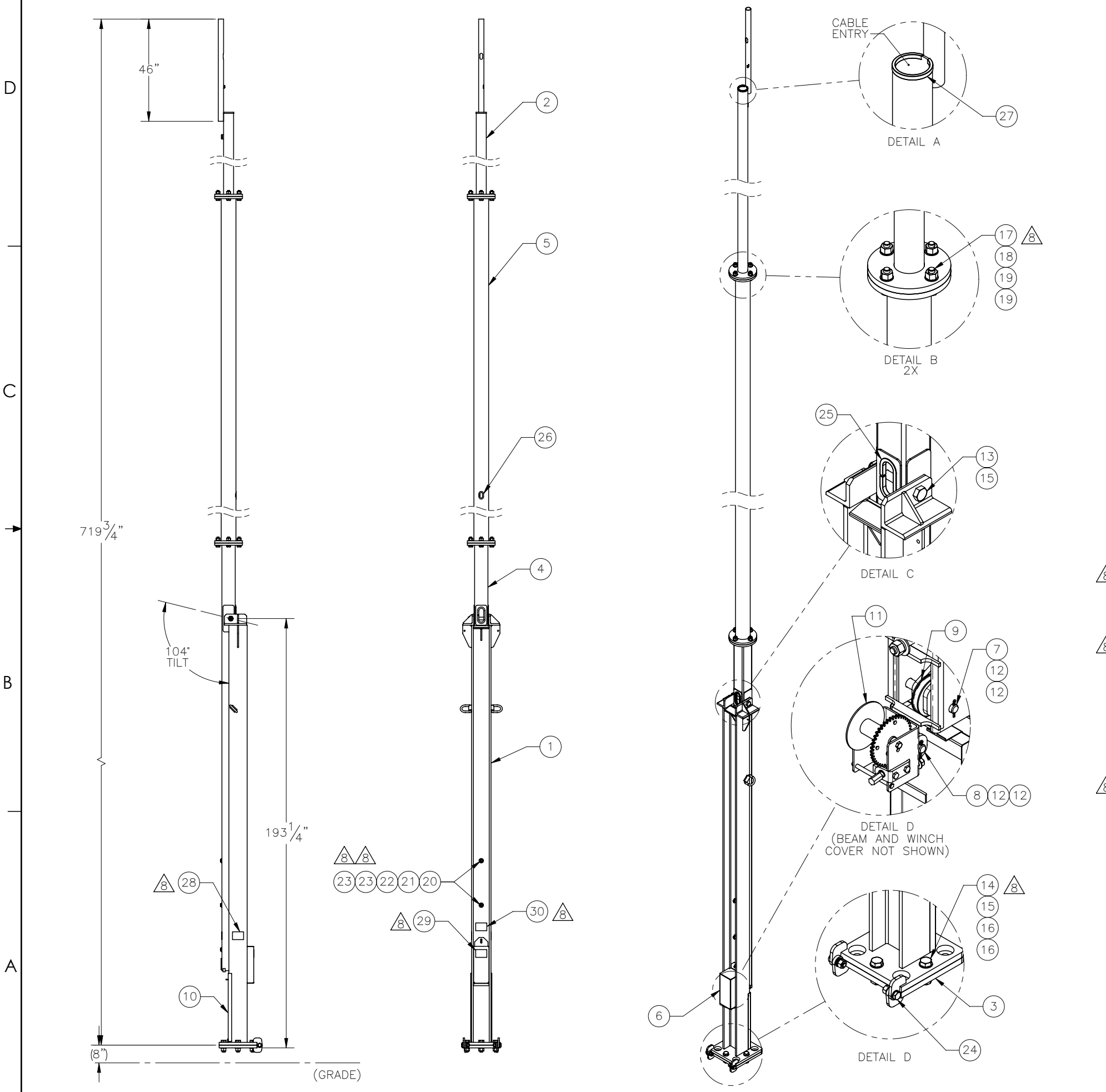


THE INFORMATION CONTAINED IN THIS DRAWING IS THE SOLE PROPERTY OF ELECTRO MECHANICAL INDUSTRIES, INC. ANY REPRODUCTION IN PART OR WHOLE WITHOUT THE WRITTEN PERMISSION OF ELECTRO MECHANICAL IND., IS PROHIBITED.

REVISIONS					
REV.	DCN #	DESCRIPTION	DATE	BY	APPROVED
8	01238	002-0BG-0272 WAS 002-0BG-0031, 002-0BG-0292 WAS 002-0BG-0210, 002-0FW-G015 WAS 002-0FW-G000, DETAIL D AND MISSING BUBBLES ADDED.	04/19/2023	JTR	JPB

120 MPH EIA/TIA REV G
PATENT PENDING: #61322706



ITEM NO.	DEFAULT / QTY REQD	PART NUMBER	DESCRIPTION	LENGTH	WEIGHT
1	1	400-004-5010-0100	SUPPORT BASE ASSEMBLY		1074.2
2	1	400-004-5010-0320	UPPER ROUND MAST ASSEMBLY		232.4
3	1	400-004-5000-0130	LOWER BASE PLATE ASSEMBLY		100.1
4	1	400-004-5000-0210	LOWER SQUARE MAST ASSEMBLY		340.4
5	1	400-004-5000-0310	MIDDLE ROUND MAST ASSEMBLY		427.1
6	1	400-004-3050-0612	WINCH COVER		8.795
7	1	400-004-5000-0071	.875 DIA. X 6.75 LG. PIN		1.13
8	1	400-004-5000-0072	.875 DIA. X 2.25 LG. PIN		0.36
9	1	400-004-5000-0080	4" SHEAVE ASSEMBLY		2.37
10	1	400-004-5010-0135	FRONT COVER		8.32
11	1	1002-0050-0007	WINCH KIT (1/4" X 47' WIRE ROPE)		9.7
12	4	002-00C-0002	COTTER PIN, .187 X 1.50 LG, GALV		0.01
13	1	002-0BG-0035	BOLT, HH, 1.25-7 X 10.00, GALV, A325, PT X 2.00	10"	4.2501
14	4	002-0BG-0272	BOLT, HH, 1.25-7 X 4.50, GALV, A325, PT X 2.00	4 1/2"	2.3311
15	5	002-0NG-0020	NUT, ANCO, HEX, 1.25-7, GALV, GR 2H		0.79
16	8	002-0FW-G011	WASHER, FLAT, 1.25, GALV, F436		0.15
17	8	002-0BG-0292	BOLT, HH, 1.00-8 X 3.75, GALV, A325, PT X 1.75	3 3/4"	1.2286
18	8	002-0NG-0000	NUT, HX, ANCO LOCK, 1.00-8UNC, GR 2H, GALV		0.43
19	16	002-0FW-G009	WASHER, FLAT, 1.00", F436, GALV.		0.08
20	3	002-0BG-0029	BOLT, HH, .750-10 X 9.00, GALV, A325, PT X 1.375	9"	1.3085
21	3	002-0NG-0002	NUT, HEX, .750-10, GALV, GR 2H		0.189
22	3	002-0LW-G003	WASHER, SPLIT LOCK, .750, GALV		0.04
23	6	002-0FW-G015	WASHER, FLAT, .750, GALV, USS		0.11
24	1	1000-0020-0105	TILT-UP TOWER DUAL HINGE .875" HARDWARE KIT		2.619
25	1	309-000-0002-15	EDGE GUARD, 1/2", 15" LG,	15"	0.102
26	1	309-000-0003-11	EDGE GUARD, 1/4", 11" LG.	11"	0.03
27	1	309-000-0001-12	EDGE GUARD, 3/16", 12" LG	12"	0.06
28	2	999-999-L001	3.5" x 5" DO NOT CLIMB DECAL		0.006
29	2	999-999-L002	3.5" x 5" PINCH POINT DECAL		0.006
30	1	999-999-L003	3.5" x 5" WINCH RATING DECAL		0.006

SURFACE FINISH <input checked="" type="checkbox"/> UNLESS OTHERWISE SPECIFIED		UNLESS OTHERWISE SPECIFIED DIMENSIONS ARE IN INCHES		APPROVALS		DATE		 ELECTRO MECHANICAL INDUSTRIES, INC. 11250 NEESEHAW DRIVE HOUSTON, TEXAS 77065 1-800-453-0050	
MATERIAL SEE PARTS LIST		TOLERANCES .00 ±.06 .000 ±.015 .000 ±.005		DRAWN CS		9/21/2010			
THIRD ANGLE PROJECTION		FRACTIONS ± 1/16		CHECKER CG		9/21/2010		TITLE: 60' TILT-UP TOWER	
NEXT ASSY		ANGLES ± .25°		ENGINEER VGD		8/14/2014			
USED ON		HOLES: DRILLED OR PUNCHED ± 1/32		PRODUCTION JKS		9/21/2010		SIZE B DRAWING NO. 400-004-5010 REV 8	
APPLICATIONS		BURNED ± 1/32		SCALE: 1:48		WEIGHT: 2246.3 lbs.		SHEET 1 OF 1	