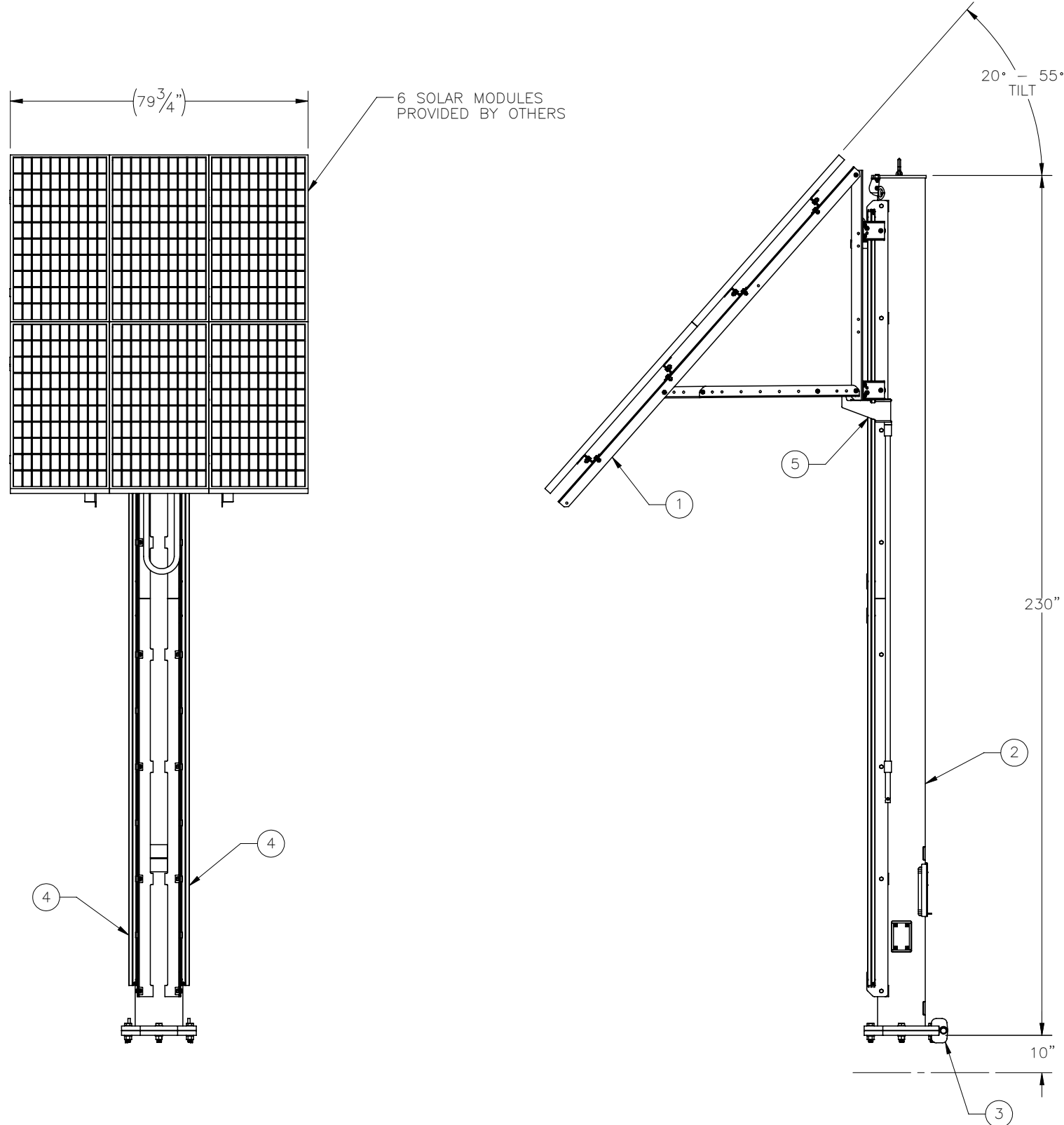

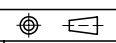


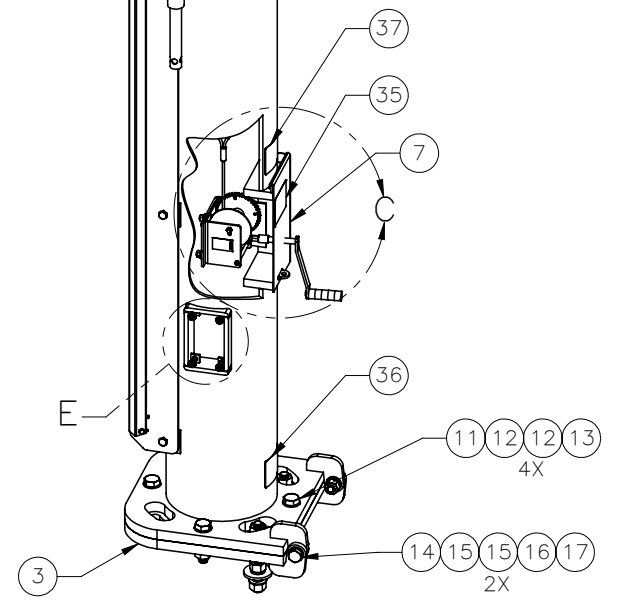
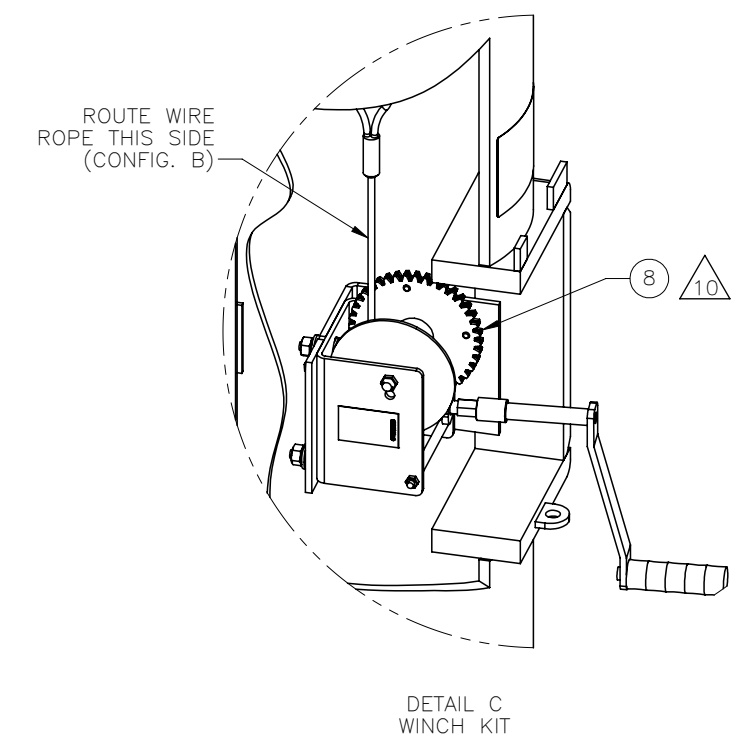
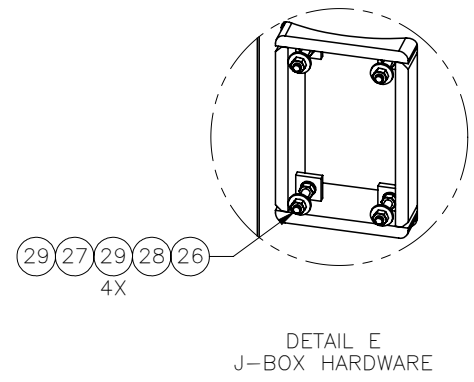
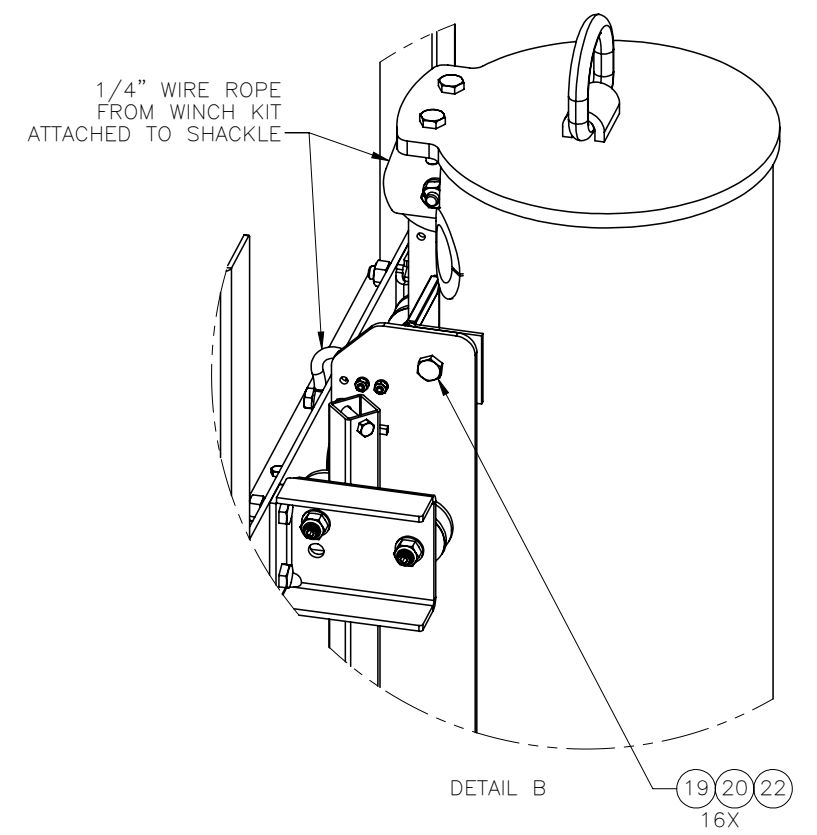
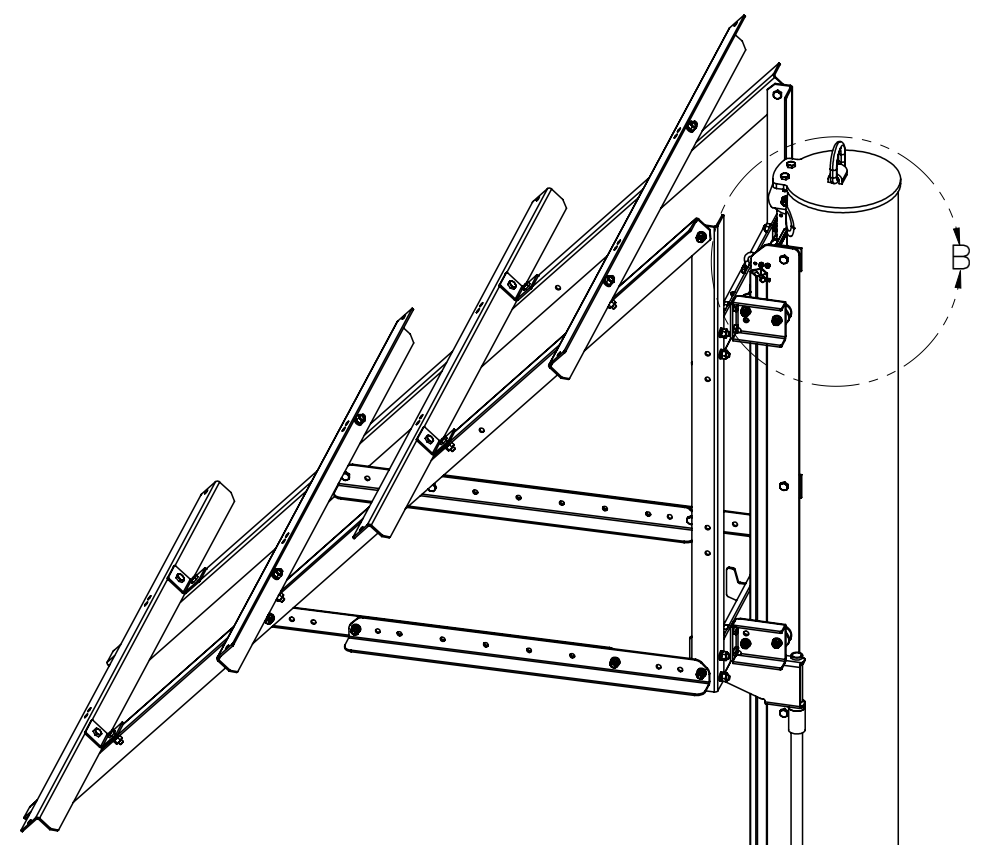
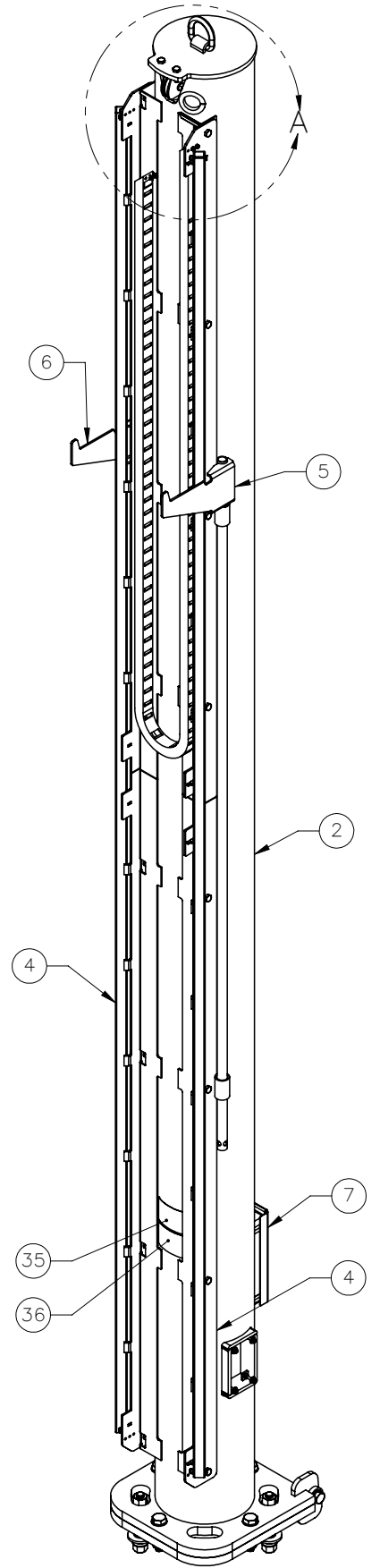
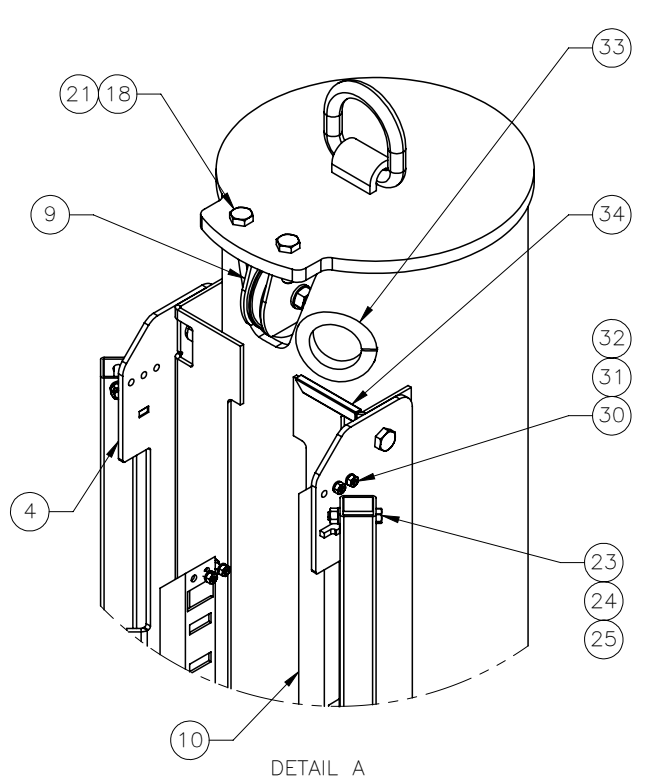
THE INFORMATION CONTAINED IN THIS DRAWING IS THE SOLE PROPERTY OF ELECTRO MECHANICAL INDUSTRIES, INC. ANY REPRODUCTION IN PART OR WHOLE WITHOUT THE WRITTEN PERMISSION OF ELECTRO MECHANICAL IND., IS PROHIBITED.

REVISIONS					
REV.	DCN #	DESCRIPTION	DATE	BY	APPROVED
10	01123	WINCH KIT UPDATED TO NEWEST VERSION.	05/12/2022	JTR	JPB



ITEM NO.	QTY REQD	PART NUMBER	DESCRIPTION	LENGTH	WEIGHT
1	1	A-000-571	6 SOLAR MODULE FRAME ASSEMBLY		499.43
2	1	400-005-1000-0100	POLE SUB ASSEMBLY		1212
3	1	400-005-1000-0130	LOWER BASE PLATE ASSEMBLY		113.62
4	2	W-002-192	SOLAR MONOPOLE TRACK WELDMENT		103.9
5	1	W-002-197	STOP ARM WELDMENT - A		19.9
6	1	W-002-198	STOP ARM WELDMENT - B		19.9
7	1	400-005-1000-0150	WINCH ACCESS COVER		3.8
8	1	1002-0050-0006	WINCH KIT (1/4" X 36' WIRE ROPE)		1.9
9	1	A-000-588	SHEAVE BLOCK ASSEMBLY, 4" DIA.		4.65
10	1	400-905-0100	DRAG CHAIN 189" LG.		5.28
11	4	002-0BG-0054	BOLT, HX HD, 1.00-8UNC X 4.50 LG, GR B7, GALV		1.32
12	8	002-0FW-G009	WASHER, FLAT, 1.00", F436, GALV.		0.08
13	4	002-0NG-0000	NUT, HX, ANCO LOCK, 1.00-8UNC, GR 2H, GALV		0.43
14	2	002-0BG-0040	BOLT, HX HD, .875-9UNC X 3.00 LG, ASTM A325, GALV		0.75
15	4	002-0FW-G008	WASHER, FLAT, .875, ASTM F436, GALV		0.09
16	2	002-0LW-G007	WASHER, SPLIT LOCK, .875, GALV		0.06
17	2	002-0NG-0009	NUT, HEX, .875-9UNC, GR 2H, GALV		0.29
18	2	002-0BG-0012	BOLT, HX HD, .500-13UNC X 1.75 LG, ASTM A325, GALV		0.2
19	16	002-0BG-0023	HCB, .500-13 X 1.25 LG., PT X 1.00, A325, HDG		0.13
20	16	002-0LW-G002	WASHER, SPLIT LOCK, .500", GALV		0.01
21	2	002-0NG-0005	NUT, HEX, ANCO LOCKNUT, .500-13UNC, GR 2H, GALV		0.1
22	16	002-0NG-0010	NUT, HEX, .500-13UNC, GR 2H, GALV		0.06
23	4	002-0BG-0048	BOLT, HEX HD, .375-16UNC X 2.0 LG, GR 5 GALV.		0.01
24	4	002-0LW-G005	WASHER, SPLIT LOCK, .375 INCH, GALV.		0.01
25	4	002-0NG-0018	NUT, HEX, .375-16UNC, GR 5, GALV		0.02
26	4	002-0BG-0208	HB, .3125-18 X 2 LG., FT, GR. 5, HDG		0.06
27	4	002-0FW-G007	WASHER, FLAT, .313", GALV		0.01
28	4	002-0LW-G006	WASHER, SPLIT LOCK, .313 INCH, GALV		0.00
29	8	002-0NG-0007	NUT, HEX, .313"-18, GR 2H, GALV.		0.00
30	4	002-0BG-0016	BOLT, HEX HD, .250-20UNC X .75 LG ASTM A307, GALV		0.02
31	4	002-0LW-G009	WASHER, SPLIT LOCK, .25 INCH, GALV		0.00
32	4	002-0NG-0014	NUT, HEX, .25-20UNC, GR 2H, GALV		0.01
33	1	309-000-0003-07	EDGE GUARD, 1/4", .50 X 7 LG.	7"	0.13
34	1	309-000-0001-34	EDGE GUARD, 3/16", 3.5" LG	3 1/2"	0.01
35	2	999-999-L001	3.5" x 5" DO NOT CLIMB DECAL		0.01
36	2	999-999-L002	3.5" x 5" PINCH POINT DECAL		0.01
37	1	999-999-L003	3.5" x 5" WINCH RATING DECAL		0.01

SURFACE FINISH <input checked="" type="checkbox"/> UNLESS OTHERWISE SPECIFIED		UNLESS OTHERWISE SPECIFIED DIMENSIONS ARE IN INCHES		APPROVALS		DATE		 ELECTRO MECHANICAL INDUSTRIES, INC. 11250 NEESESHAW DRIVE HOUSTON, TEXAS 77065 1-800-453-0050	
MATERIAL SEE PARTS LIST		TOLERANCES .0 ±.06 .00 ±.015 .000 ±.005 FRACTIONS ± 1/16 ANGLES ±.25° HOLES: DRILLED OR PUNCHED ±1/32 BURNED ±1/32		DRAWN CS		1/12/2012			
THIRD ANGLE PROJECTION 				CHECKER LC		1/30/2012		SIZE B	
NEXT ASSY		USED ON		ENGINEER CS		1/26/2012		DRAWING NO. 400-005-1060	
APPLICATIONS				PRODUCTION JKS		1/26/2012		REV 10	
								SCALE: 1:36 WEIGHT: 2102.6 lbs. SHEET 1 OF 2	



FRONT ISOMETRIC VIEW
SHOWN WITHOUT SOLAR
MODULE FRAME ASSEMBLY