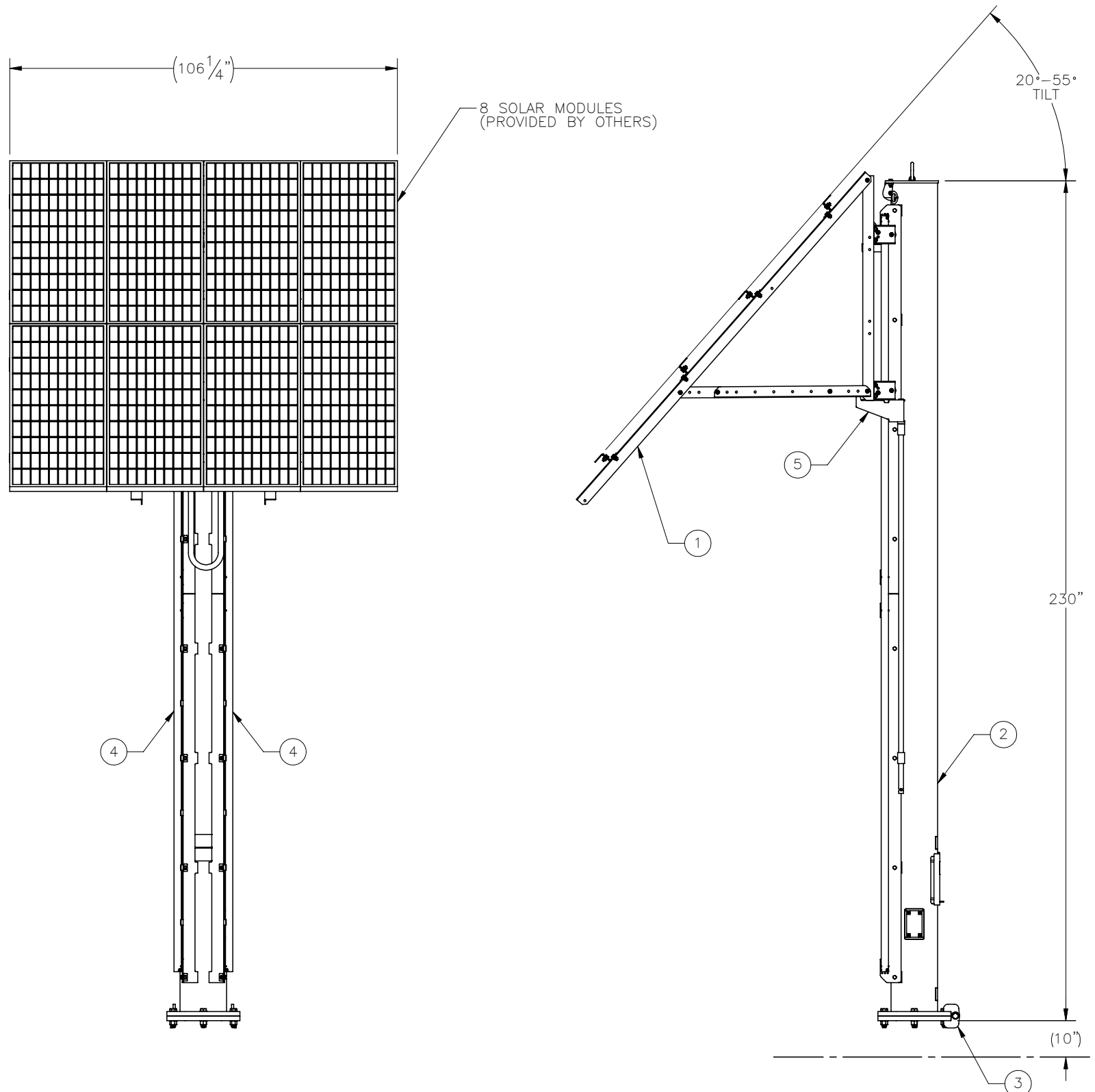

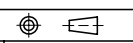


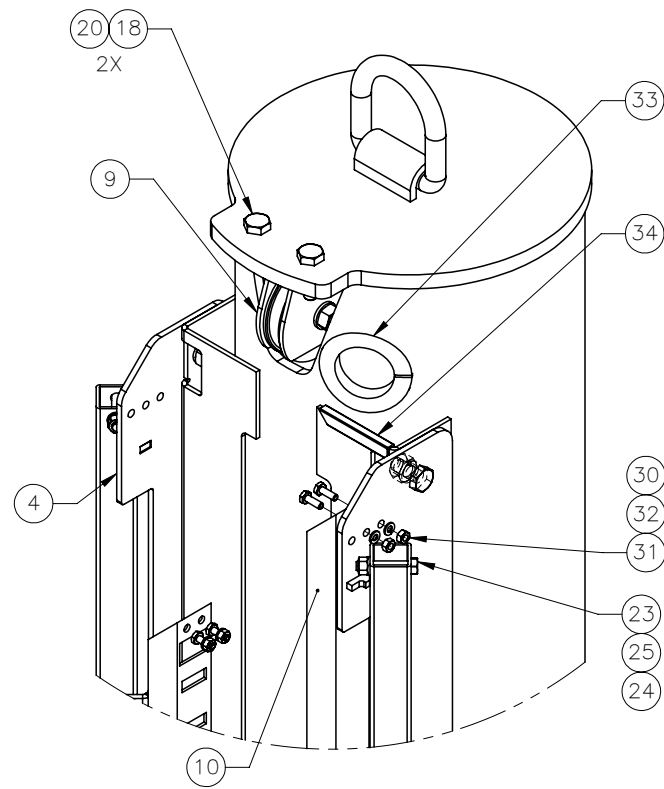
THE INFORMATION CONTAINED IN THIS DRAWING IS THE SOLE PROPERTY OF ELECTRO MECHANICAL INDUSTRIES, INC. ANY REPRODUCTION IN PART OR WHOLE WITHOUT THE WRITTEN PERMISSION OF ELECTRO MECHANICAL IND., IS PROHIBITED.

REVISIONS					
REV.	DCN #	DESCRIPTION	DATE	BY	APPROVED
11	01123	UPDATED WINCH KIT TO LATEST VERSION.	05/12/2022	JTR	JPB

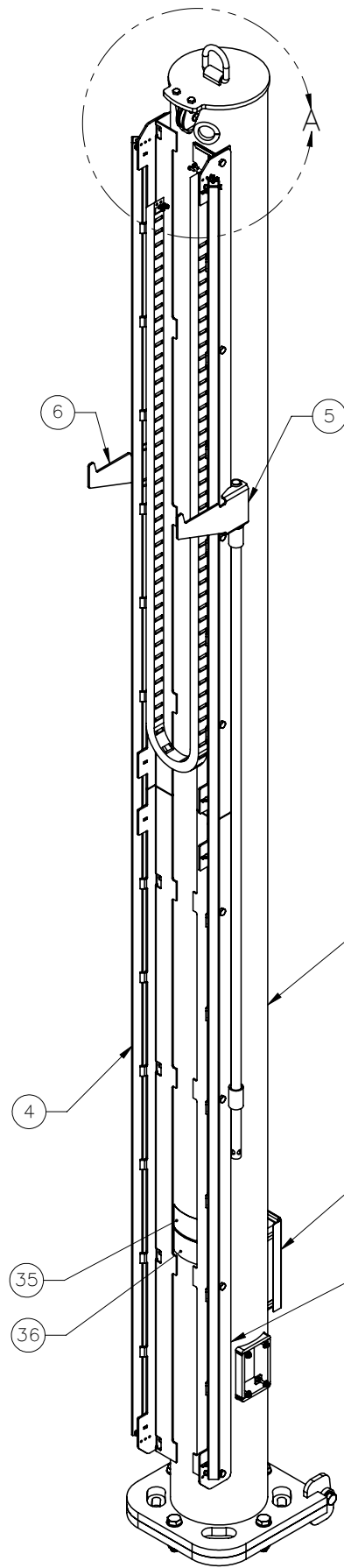


ITEM NO.	QTY.	PART NUMBER	DESCRIPTION	LENGTH	WEIGHT
1	1	A-000-572	8 SOLAR MODULE FRAME ASSEMBLY		585.57
2	1	400-005-1000-0100	POLE SUB ASSEMBLY		1212
3	1	400-005-1000-0130	LOWER BASE PLATE ASSEMBLY		113.62
4	2	W-002-192	SOLAR MONOPOLE TRACK WELDMENT		103.9
5	1	W-002-197	STOP ARM WELDMENT - A		19.9
6	1	W-002-198	STOP ARM WELDMENT - B		19.9
7	1	400-005-1000-0150	WINCH ACCESS COVER	14.345	3.8
8	1	1002-0050-0006	WINCH KIT (1/4" X 36' WIRE ROPE)		1.9
9	1	A-000-588	SHEAVE BLOCK ASSEMBLY, 4" DIA.		4.65
10	1	400-905-0100	DRAG CHAIN 189" LG.		5.28
11	4	002-0BG-0054	BOLT, HX HD, 1.00-8UNC X 4.50 LG, GR B7, GALV		1.32
12	4	002-0NG-0000	NUT, HX, ANCO LOCK, 1.00-8UNC, GR 2H, GALV		0.43
13	8	002-0FW-G009	WASHER, FLAT, 1.00", F436, GALV.		0.08
14	2	002-0BG-0040	BOLT, HX HD, .875-9UNC X 3.00 LG, ASTM A325, GALV		0.75
15	2	002-0NG-0009	NUT, HX, .875-9UNC, GR 2H, GALV		0.29
16	2	002-0LW-G007	WASHER, SPLIT LOCK, .875, GALV		0.06
17	4	002-0FW-G008	WASHER, FLAT, .875, ASTM F436, GALV		0.09
18	2	002-0BG-0012	BOLT, HX HD, .500-13UNC X 1.75 LG, ASTM A325, GALV		0.2
19	16	002-0BG-0023	HHB, .500-13 X 1.25 LG., PT X 1.00, A325, HDG		0.13
20	2	002-0NG-0005	NUT, HEX, ANCO LOCKNUT, .500-13UNC, GR 2H, GALV		0.1
21	16	002-0NG-0010	NUT, HEX, .500-13UNC, GR 2H, GALV		0.06
22	16	002-0LW-G002	WASHER, SPLIT LOCK, .500", GALV		0.01
23	4	002-0BG-0048	BOLT, HEX HD, .375-16UNC X 2.0 LG, GR 5 GALV.		0.01
24	4	002-0NG-0018	NUT, HEX, .375-16UNC, GR 5, GALV		0.02
25	4	002-0LW-G005	WASHER, SPLIT LOCK, .375 INCH, GALV.		0.01
26	4	002-0BG-0208	HB, .3125-18 X 2 LG., FT, GR. 5, HDG		0.06
27	8	002-0NG-0007	NUT, HEX, .313"-18, GR 2H, GALV.		0.00
28	4	002-0LW-G006	WASHER, SPLIT LOCK, .313 INCH, GALV		0.00
29	4	002-0FW-G007	WASHER, FLAT, .313", GALV		0.01
30	4	002-0BG-0016	BOLT, HEX HD, .250-20UNC X .75 LG ASTM A307, GALV		0.02
31	4	002-0NG-0014	NUT, HEX, .25-20UNC, GR 2H, GALV		0.01
32	4	002-0LW-G009	WASHER, SPLIT LOCK, .25 INCH, GALV		0.00
33	1	309-000-0003-07	EDGE GUARD, 1/4", .50 X 7 LG.	7"	0.13
34	1	309-000-0001-34	EDGE GUARD, 3/16", 3.5" LG	3 1/2"	0.01
35	2	999-999-L001	3.5" x 5" DO NOT CLIMB DECAL		0.01
36	2	999-999-L002	3.5" x 5" PINCH POINT DECAL		0.01
37	1	999-999-L003	3.5" x 5" WINCH RATING DECAL		0.01

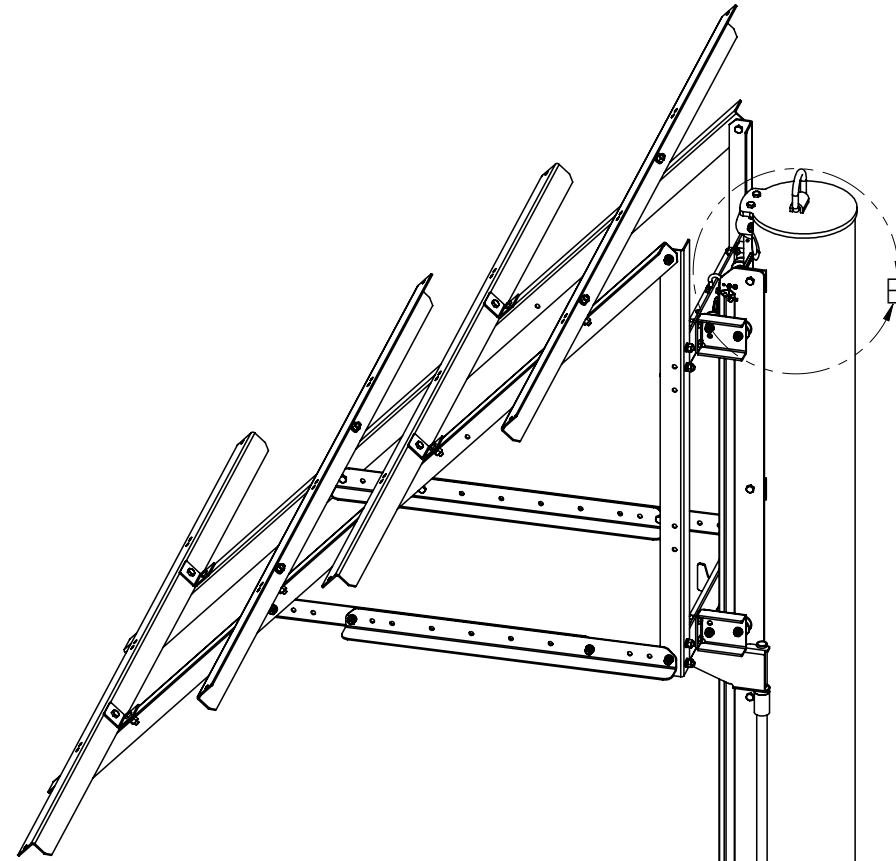
SURFACE FINISH <input checked="" type="checkbox"/> UNLESS OTHERWISE SPECIFIED		UNLESS OTHERWISE SPECIFIED DIMENSIONS ARE IN INCHES		APPROVALS		DATE		 ELECTRO MECHANICAL INDUSTRIES, INC. 11250 NEESESHAW DRIVE HOUSTON, TEXAS 77065 1-800-453-0050	
MATERIAL SEE PARTS LIST		TOLERANCES .0 ±.06 .00 ±.015 .000 ±.005		DRAWN CS		7/8/2011		TITLE: SOLAR MONOPOLE TOWER - 8 MODULE	
THIRD ANGLE PROJECTION 		FRACTIONS ± 1/16 ANGLES ± .25°		CHECKER LC		12/5/2011		SIZE B	
NEXT ASSY		HOLES: DRILLED OR PUNCHED ± 1/32 BURNED ± 1/32		ENGINEER CS		12/5/2011		DRAWING NO. 400-005-1080	
APPLICATIONS				PRODUCTION JKS		1/5/2012		REV 11	
				SCALE: 1:36		WEIGHT: 2189.1 lbs.		SHEET 1 OF 2	



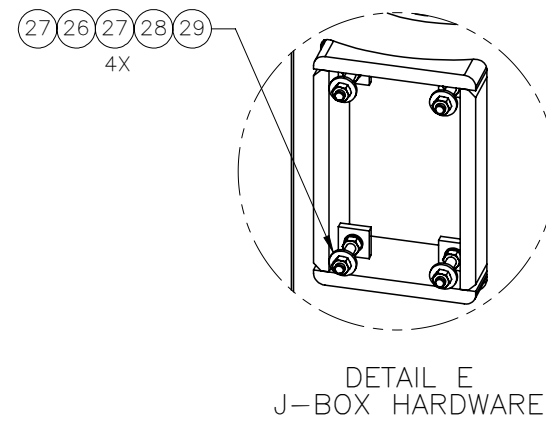
DETAIL A



FRONT ISOMETRIC VIEW
SHOWN WITHOUT SOLAR
MODULE FRAME ASSEMBLY

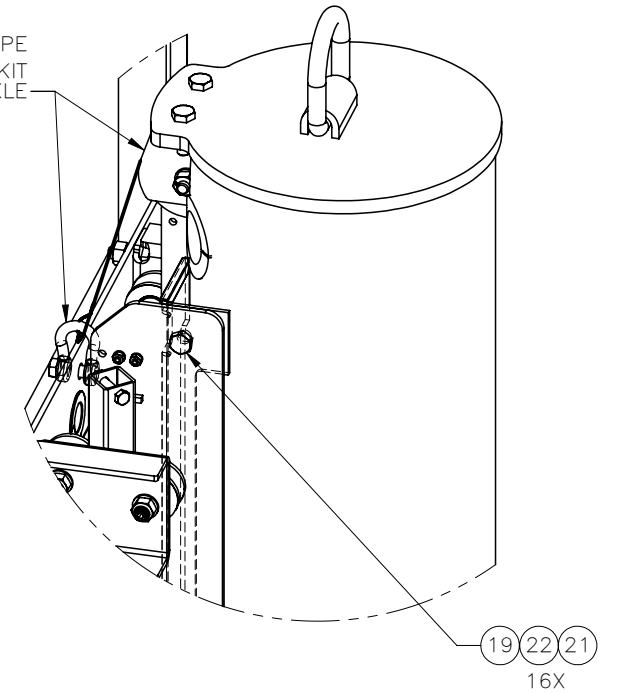


REAR ISOMETRIC VIEW 2X



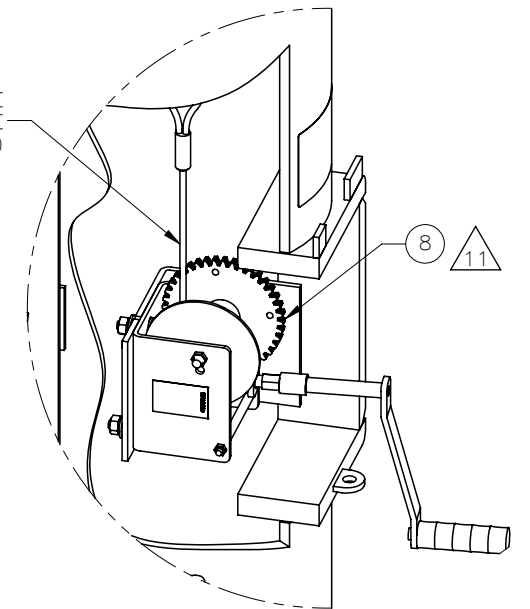
DETAIL E
J-BOX HARDWARE

1/4" WIRE ROPE
FROM WINCH KIT
ATTACHED TO SHACKLE




DETAIL B

ROUTE WIRE
ROPE THIS SIDE
(CONFIG. B)



DETAIL C
WINCH KIT

		ELECTRO MECHANICAL INDUSTRIES, INC. 11230 NEESHAW DRIVE HOUSTON, TEXAS 77065 1-800-453-0050	
SIZE	DRAWING NO.	REV.	
B	400-005-1080	11	
SCALE:	1:64	SHEET 2 OF 2	