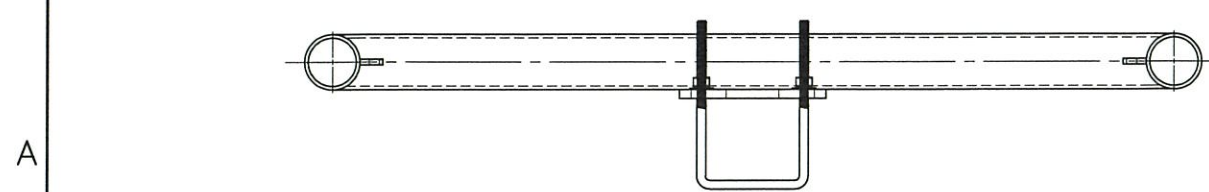
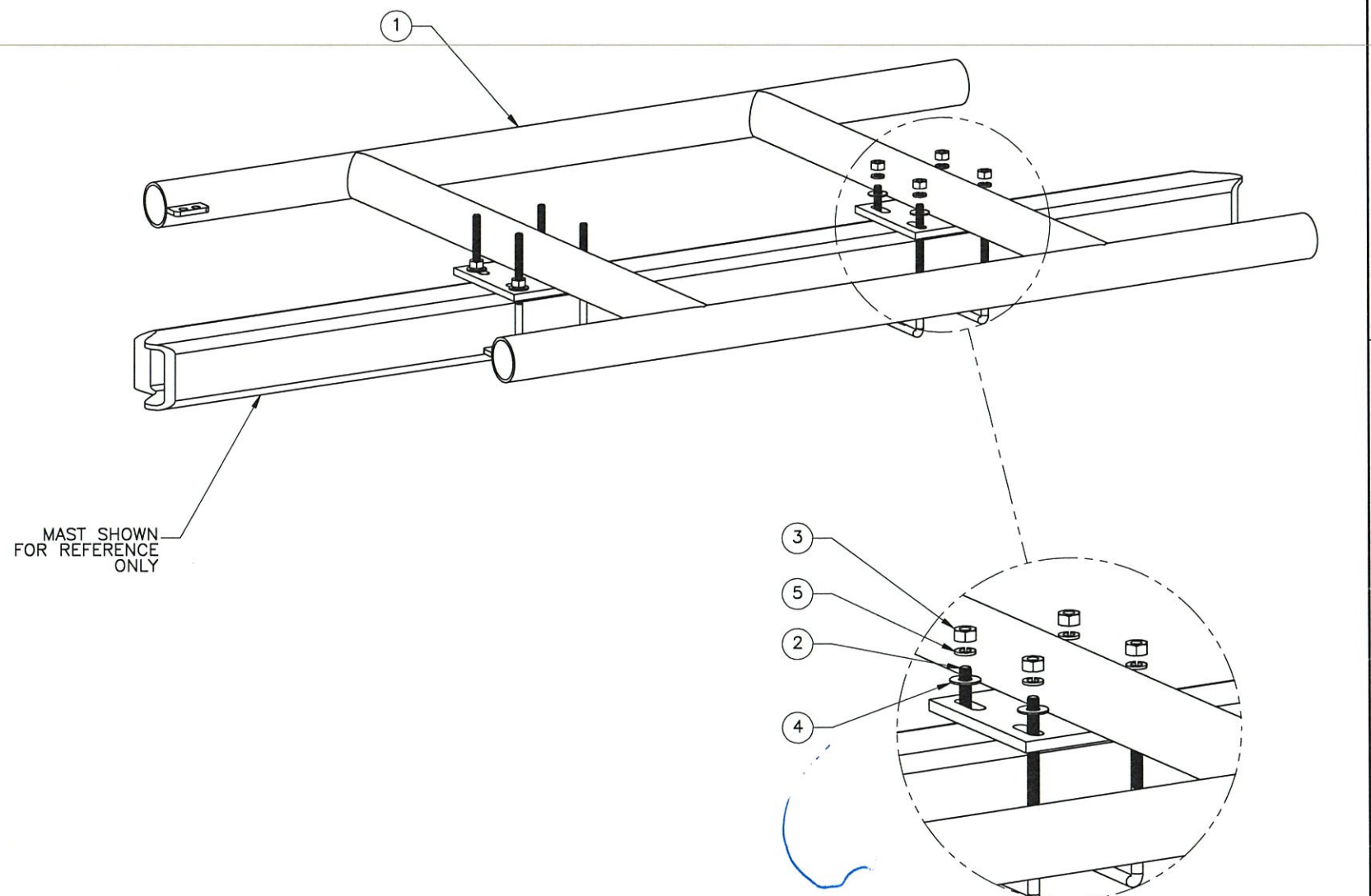
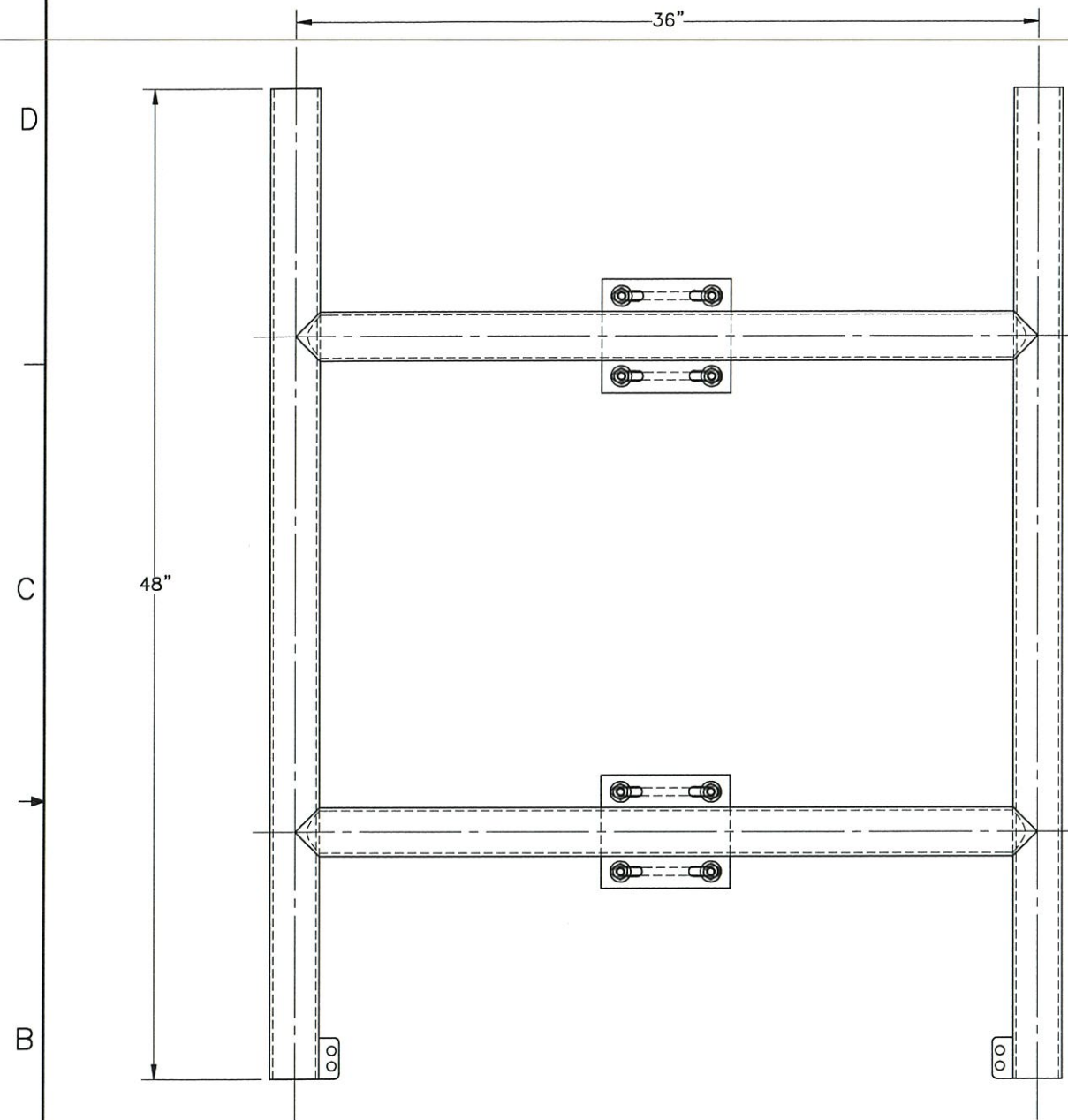


THE INFORMATION CONTAINED IN THIS DRAWING IS THE SOLE PROPERTY OF ELECTRO MECHANICAL INDUSTRIES, INC. ANY REPRODUCTION IN PART OR WHOLE WITHOUT THE WRITTEN PERMISSION OF ELECTRO MECHANICAL IND., IS PROHIBITED.

REVISIONS			
ZONE	REV	DESCRIPTION	DATE



ITEM NO.	QTY. REQD	PART NUMBER	DESCRIPTION
1	1	400-904-0103-0100	ANTENNA H-FRAME
2	4	COMMON	U-BOLT, SQUARE, .375"-16 X 4" WD, 6.625" LG., GALV.
3	8	002-ONG-0003	NUT, HEX, .375-16UNC, GR 2H, GALV
4	8	002-OFW-G005	WASHER, FLAT, .375, TYPE A, GALV
5	8	002-OLW-G005	WASHER, SPLIT LOCK, .375 INCH, GALV

SURFACE FINISH	<input checked="" type="checkbox"/> UNLESS OTHERWISE SPECIFIED	UNLESS OTHERWISE SPECIFIED DIMENSIONS ARE IN INCHES	APPROVALS	DATE
MATERIAL	SEE PARTS LIST	TOLERANCES	DRAWN	10.15.15
THIRD ANGLE PROJECTION		.0 ± .06 .00 ± .01 .000 ± .005	CHECKED	10.19.15
		FRACTIONS ± 1/16	ENGINEER/DESIGNER	
		ANGLES ± .25°	PRODUCTION	10.15.15
NEXT ASSY	USED ON	HOLE: DRILLED OR PUNCHED +1/32		
APPLICATIONS		BURNED ±1/32		

ELECTRO MECHANICAL INDUSTRIES, INC. 11230 NEESEAW DRIVE HOUSTON, TEXAS 77065 1-800-453-0050		TITLE:	ANTENNA H-FRAME
SIZE	DRAWING NO.	REV	
B	400-904-0102	-	
SCALE:	1:12	WEIGHT:	59.78 lbs.
		SHEET 1 OF 1	