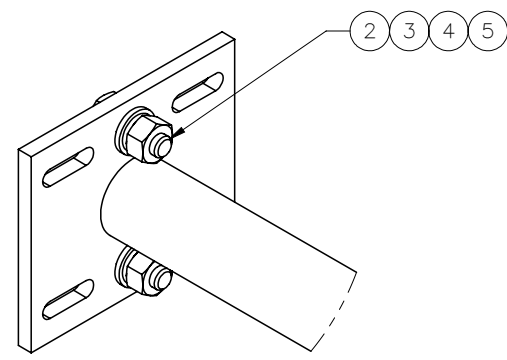
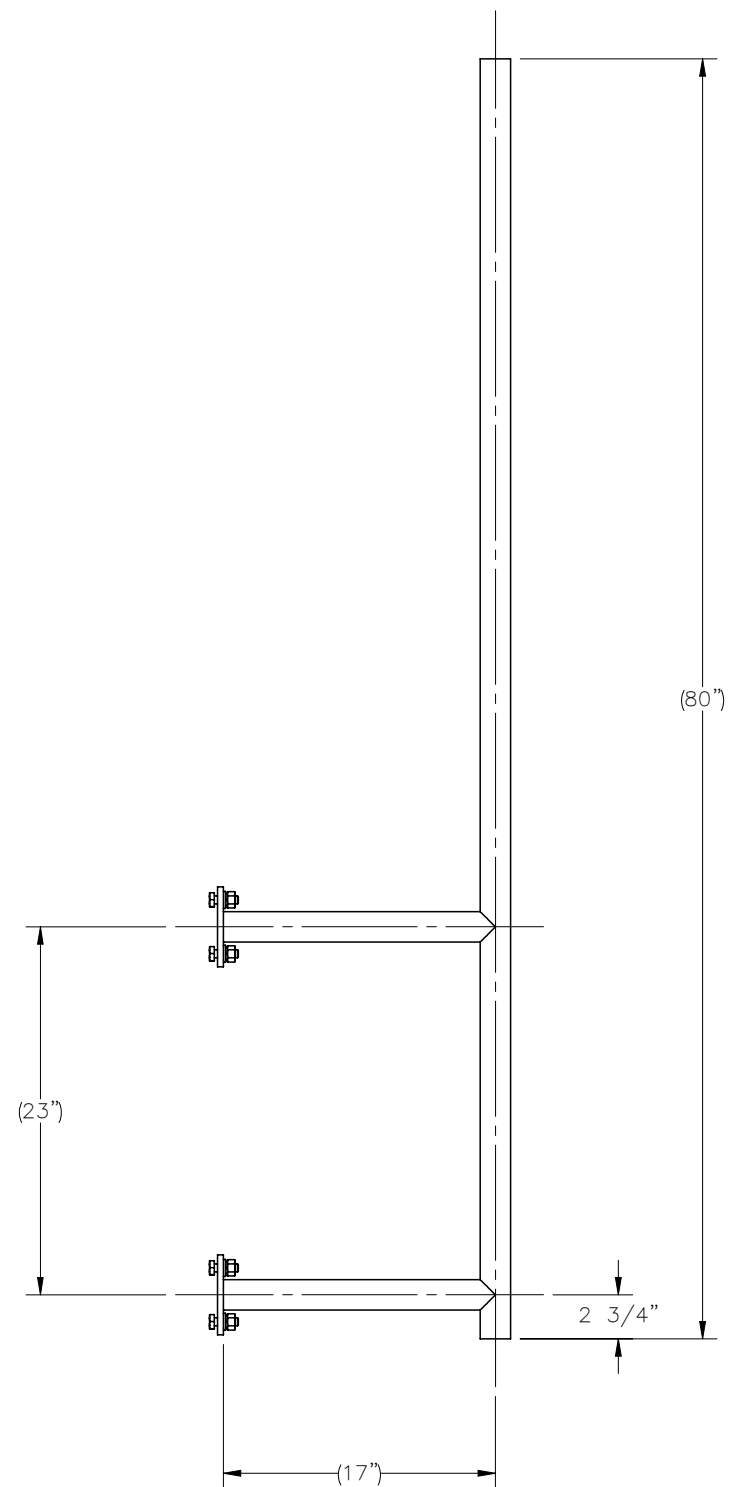
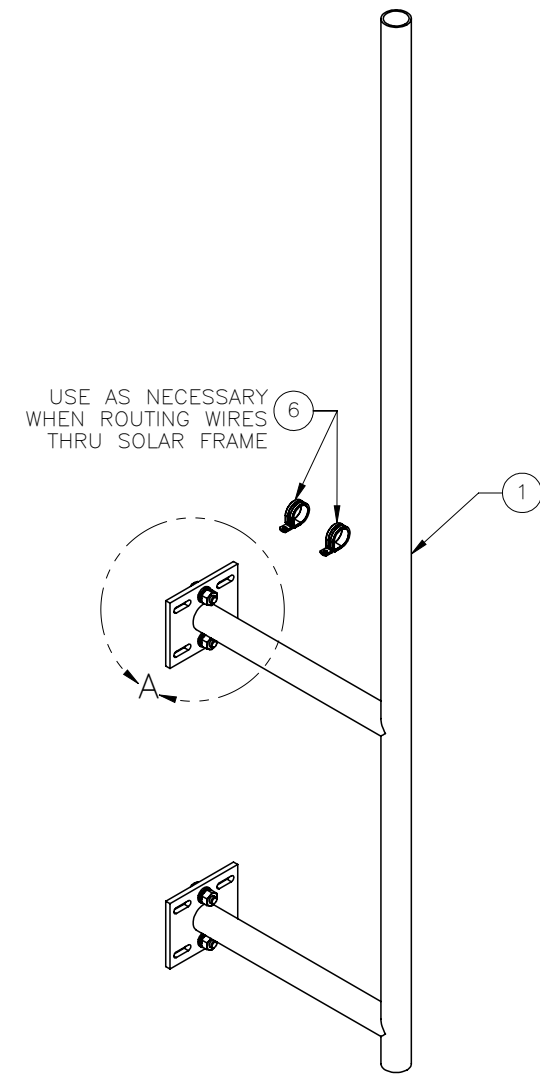


THE INFORMATION CONTAINED IN THIS DRAWING IS THE SOLE PROPERTY OF ELECTRO MECHANICAL INDUSTRIES, INC. ANY REPRODUCTION IN PART OR WHOLE WITHOUT THE WRITTEN PERMISSION OF ELECTRO MECHANICAL IND., IS PROHIBITED.


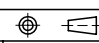
REVISIONS					
REV.	DCN #	DESCRIPTION	DATE	BY	APPROVED
2	01154	HARDWARE UPDATE	6/10/2022	BLH	JPB



DETAIL A



ITEM NO.	QTY REQD	PART NUMBER	DESCRIPTION
1	1	400-904-0131-0100	WIND GENERATOR MOUNT FRAME
2	4	002-OBG-0010	BOLT, HX HD, .500-13UNC X 1.50 LG, ASTM A325, GALV
3	4	002-ONG-0010	NUT, HEX, .500-13UNC, GR 2H, GALV
4	4	002-OLW-G002	WASHER, SPLIT LOCK, .500", GALV
5	4	002-OFW-G002	FW, .50, F436, HDG
6	2	002-OLC-0001	CABLE CLAMP, 1.25" I.D.

SURFACE FINISH <input checked="" type="checkbox"/> UNLESS OTHERWISE SPECIFIED		UNLESS OTHERWISE SPECIFIED DIMENSIONS ARE IN INCHES		APPROVALS		DATE		 ELECTRO MECHANICAL INDUSTRIES, INC. 11230 NEESESHAW DRIVE HOUSTON, TEXAS 77065 1-800-453-0050	
MATERIAL SEE PARTS LIST		TOLERANCES .0 ±.06 .00 ±.015 .000 ±.005		DRAWN CS		9/14/2012			
THIRD ANGLE PROJECTION 		FRACTIONS ± 1/16		CHECKER R. WOODARD		9/14/2012		TITLE: WIND GEN MOUNT ASSEMBLY	
NEXT ASSY USED ON		ANGLES ± .25°		ENGINEER C. SANCHEZ		9/14/2012			
APPLICATIONS		HOLES: DRILLED OR PUNCHED ± 1/32		PRODUCTION J. SUNDERLAND		9/14/2012		SIZE B DRAWING NO. 400-904-0132 REV 2	
		BURNED ± 1/32		SCALE: 1:24		WEIGHT: 31.82 lbs.		SHEET 1 OF 1	