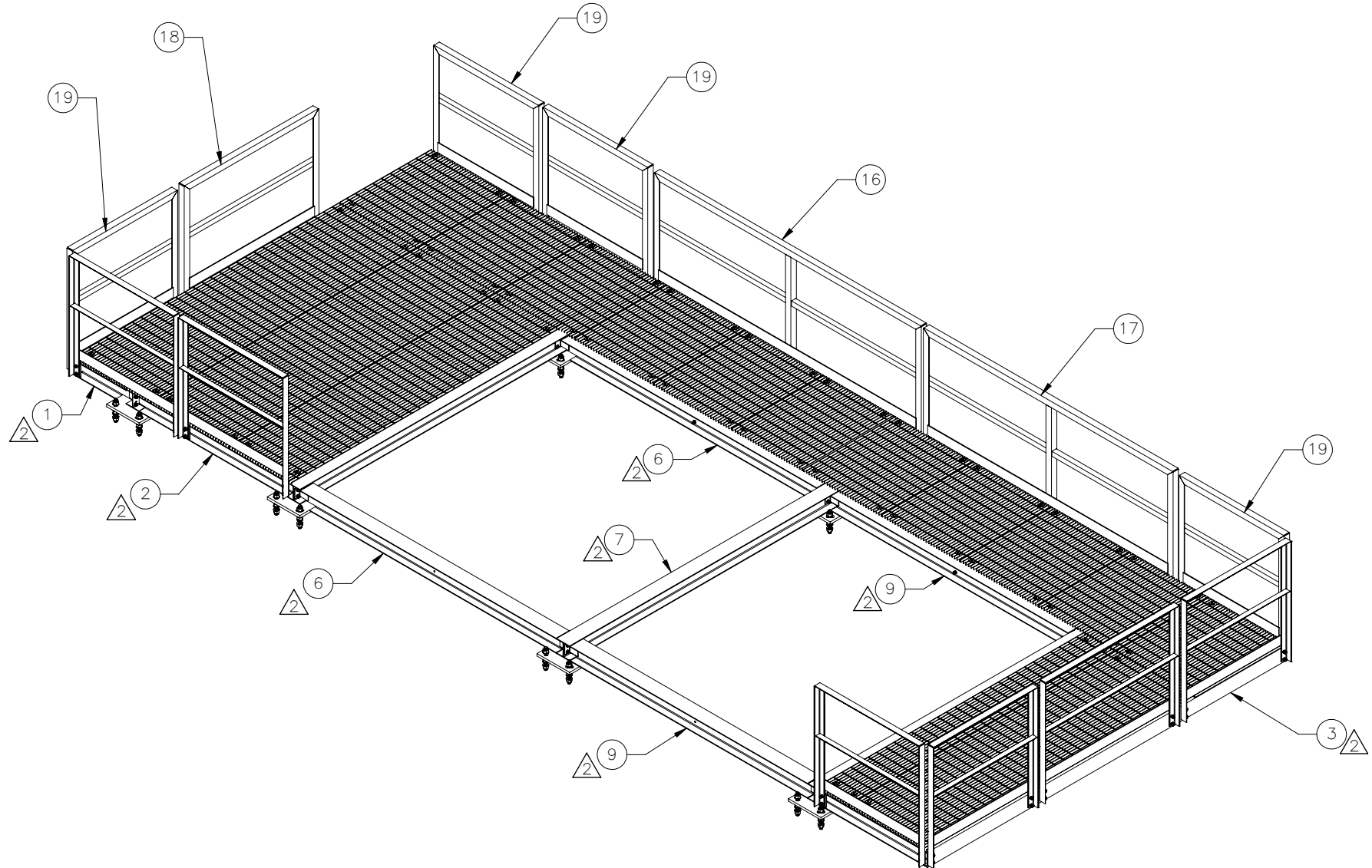

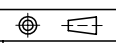


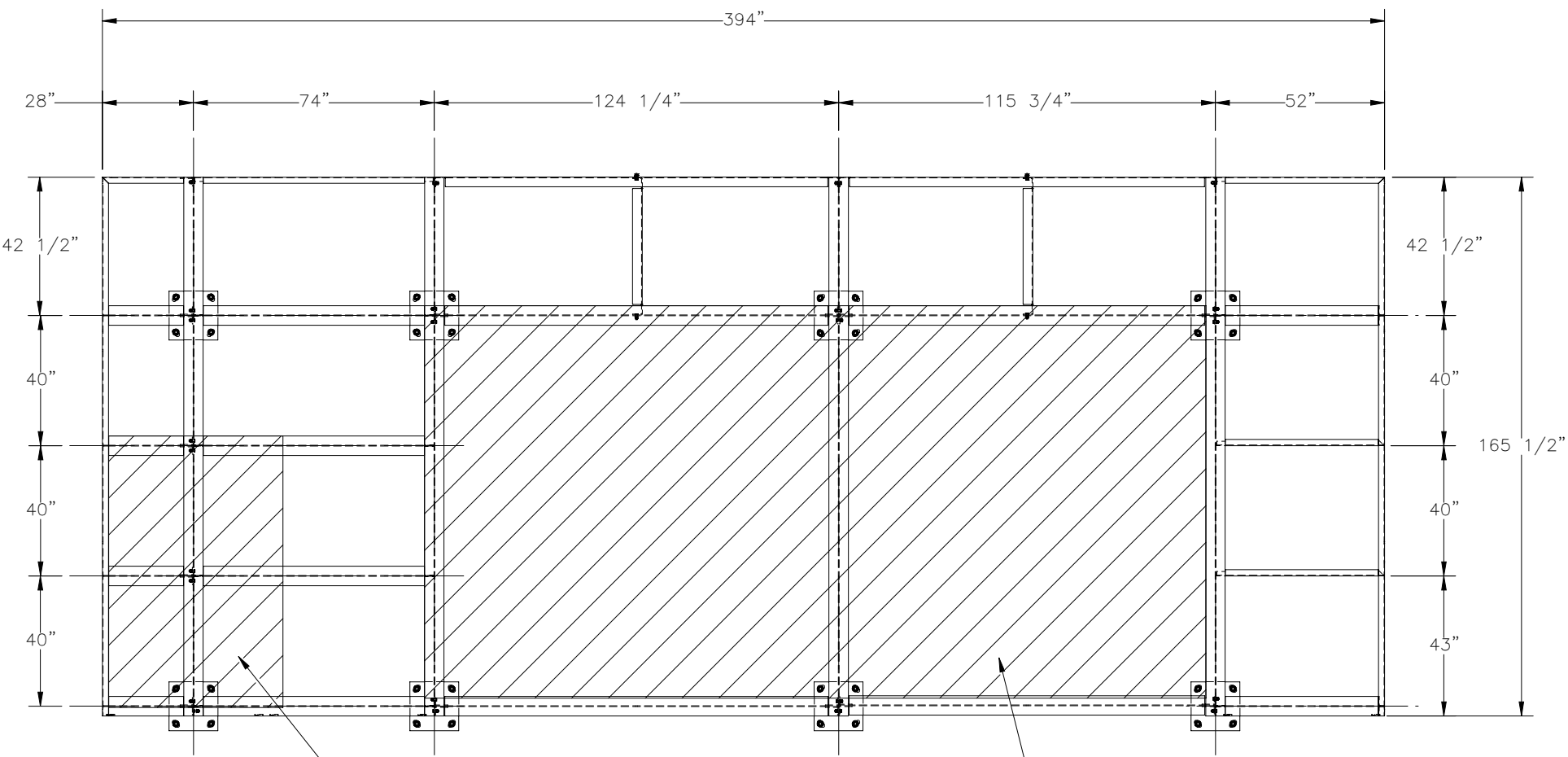
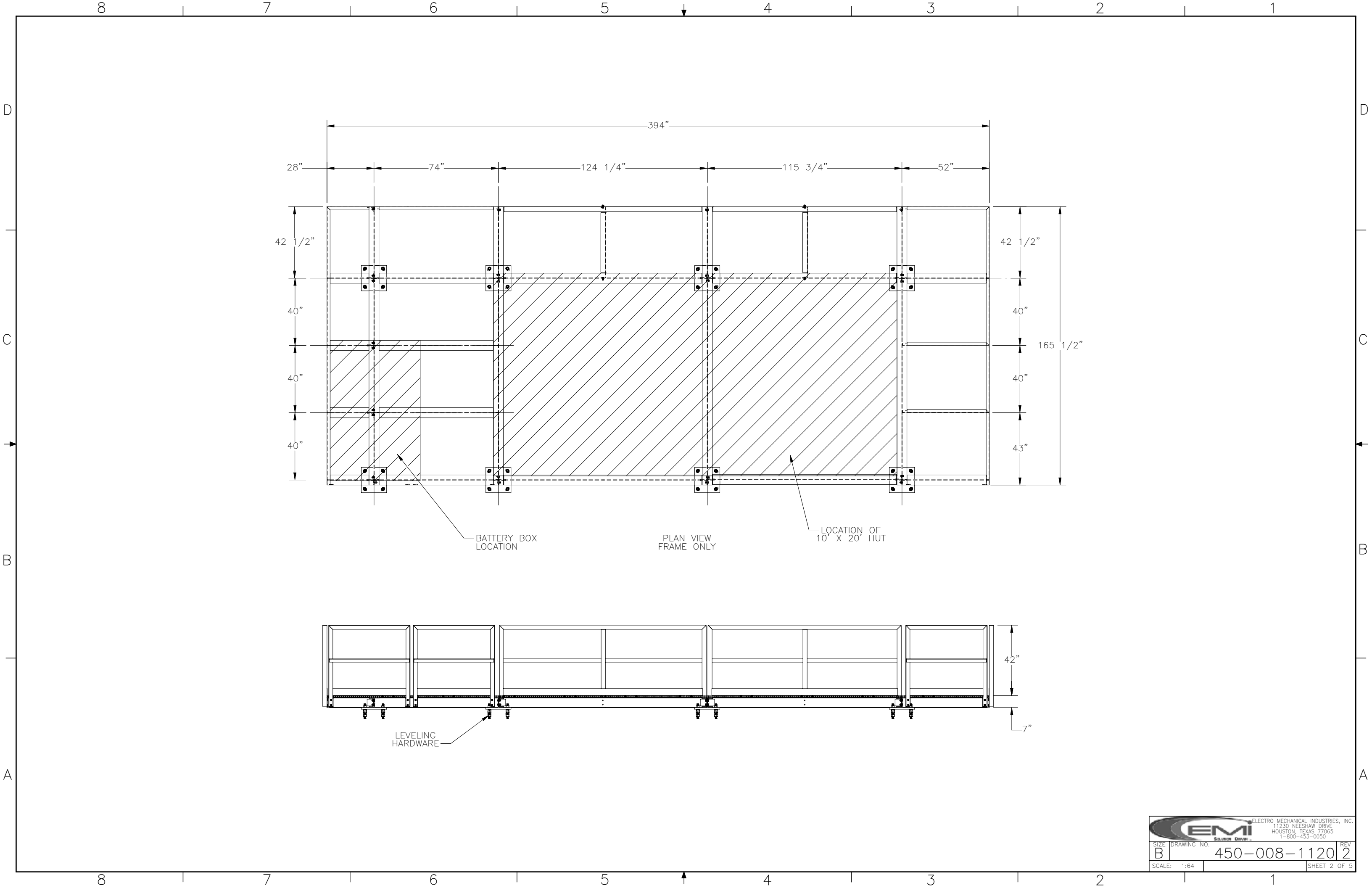
THE INFORMATION CONTAINED IN THIS DRAWING IS THE SOLE PROPERTY OF ELECTRO MECHANICAL INDUSTRIES, INC. ANY REPRODUCTION IN PART OR WHOLE WITHOUT THE WRITTEN PERMISSION OF ELECTRO MECHANICAL IND., IS PROHIBITED.

REVISIONS					
REV.	DCN #	DESCRIPTION	DATE	BY	APPROVED
2	01145	UPDATE BOLT SPACING ON FRAME	05/16/2022	BLH	JPB



ITEM NO.	QTY REQD	PART NUMBER	DESCRIPTION	LENGTH	WEIGHT
1	1	W-002-222	END CAP ASS'Y - BATTERY SIDE		267.9
2	1	W-002-223	INNER END CAP ASS'Y-BATTERY SIDE		1061.2
3	1	W-002-224	END CAP, ASS'Y- OPP. BATTERY SIDE		667.6
4	1	P-004-767	6" FORMED CHANNEL WITH CHANNEL COPES	124"	97.043
5	2	P-004-758	6" FORMED CHANNEL WITH CHANNEL COPES	42 1/8"	32.121
6	2	W-002-159	INNER BEAM WELDMENT		156.4
7	1	W-002-162	PIER BEAM WELDMENT		329.6
8	1	P-004-766	6" FORMED CHANNEL WITH CHANNEL COPES	115 1/2"	90.368
9	2	W-002-172	INNER BEAM WELDMENT		145.7
10	3	T010-0357-1230	GRATING PANEL, 1" THK SMOOTH, 31 BAR, 35.8125 WIDTH	123"	213.913
11	1	T010-0286-1230	GRATING PANEL, 1" SMOOTH, 25 BAR, 28.6875 WIDTH	123"	172.431
12	1	T010-0144-1230	GRATING PANEL, 1" SMOOTH, 13 BAR, 14.4375 WIDTH	123"	89.465
13	10	T010-0357-0420	GRATING PANEL, 1" THK SMOOTH, 31 BAR, 35.8125 WIDTH	42"	72.942
14	1	T010-0322-0420	GRATING PANEL, 1" SMOOTH, 28 BAR, 32.25 WIDTH	42"	65.870
15	64	000-MSG-0008	GRATING CLIP, 1", GALV.		0.20
16	1	1004-T001-1230	HANDRAIL, 123	123"	153.53
17	1	1004-T001-1150	HANDRAIL, 115	115"	146.47
18	2	1004-T001-0620	HANDRAIL, 62	62"	84.26
19	9	1004-T001-0484	HANDRAIL, 48.5	48 1/2"	72.36
20	14	002-0BG-0012	HHB, .500-13 X 1.75 LG., PT X 1.00, A325, HDG	1.75	0.2
21	94	002-0BG-0010	HHB, .500-13 X 1.50 LG., PT X 1.00, A325, HDG	1.50	0.14
22	122	002-0FW-G002	FW, .50, F436, HDG		0.02
23	108	002-0LW-G002	WASHER, SPLIT LOCK, .500", GALV		0.01
24	108	002-0NG-0010	NUT, HEX, .500-13UNC, GR 2H, GALV		0.06
25	8	1000-0020-0077	QUAD MOUNT LEVELING HARDWARE KIT		15.169

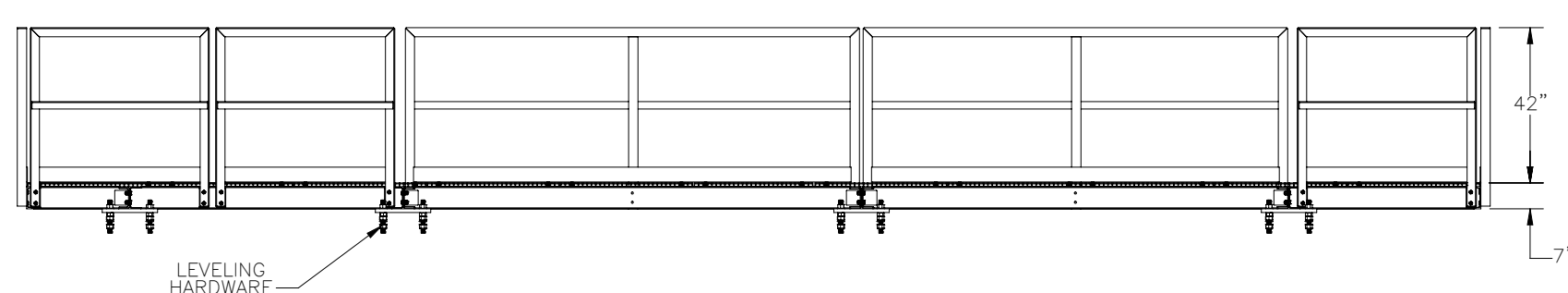
SURFACE FINISH <input checked="" type="checkbox"/> UNLESS OTHERWISE SPECIFIED		UNLESS OTHERWISE SPECIFIED DIMENSIONS ARE IN INCHES		APPROVALS		DATE		 ELECTRO MECHANICAL INDUSTRIES, INC. 11230 NEESESHAW DRIVE HOUSTON, TEXAS 77065 1-800-453-0050	
MATERIAL		TOLERANCES		DRAWN		10/9/2012			
THIRD ANGLE PROJECTION 		.0 ±.06 .00 ±.015 .000 ±.005		CHECKER		6/1/2021		TITLE: 10' X 20' HUT PLATFORM	
NEXT ASSY		FRACTIONS ± 1/16		ENGINEER		6/1/2021			
USED ON		ANGLES ± .25°		PRODUCTION		5/11/2022		SIZE B DRAWING NO. 450-008-1120 REV 2	
APPLICATIONS		HOLES: DRILLED OR PUNCHED ± 1/32		SCALE: 1:64		WEIGHT: 6161.6 lbs.		SHEET 1 OF 5	
		BURNED ± 1/32							



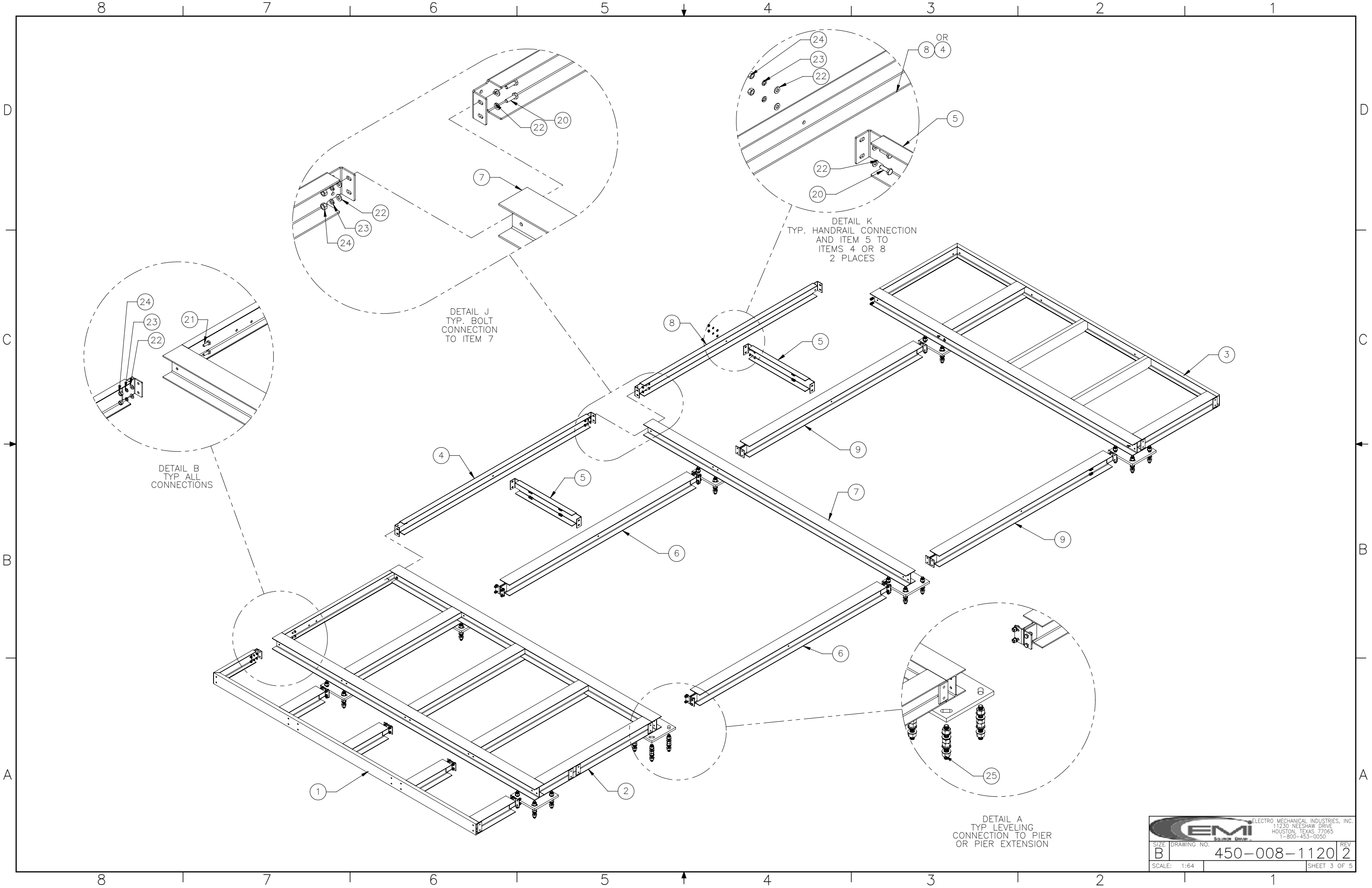
BATTERY BOX LOCATION

PLAN VIEW FRAME ONLY

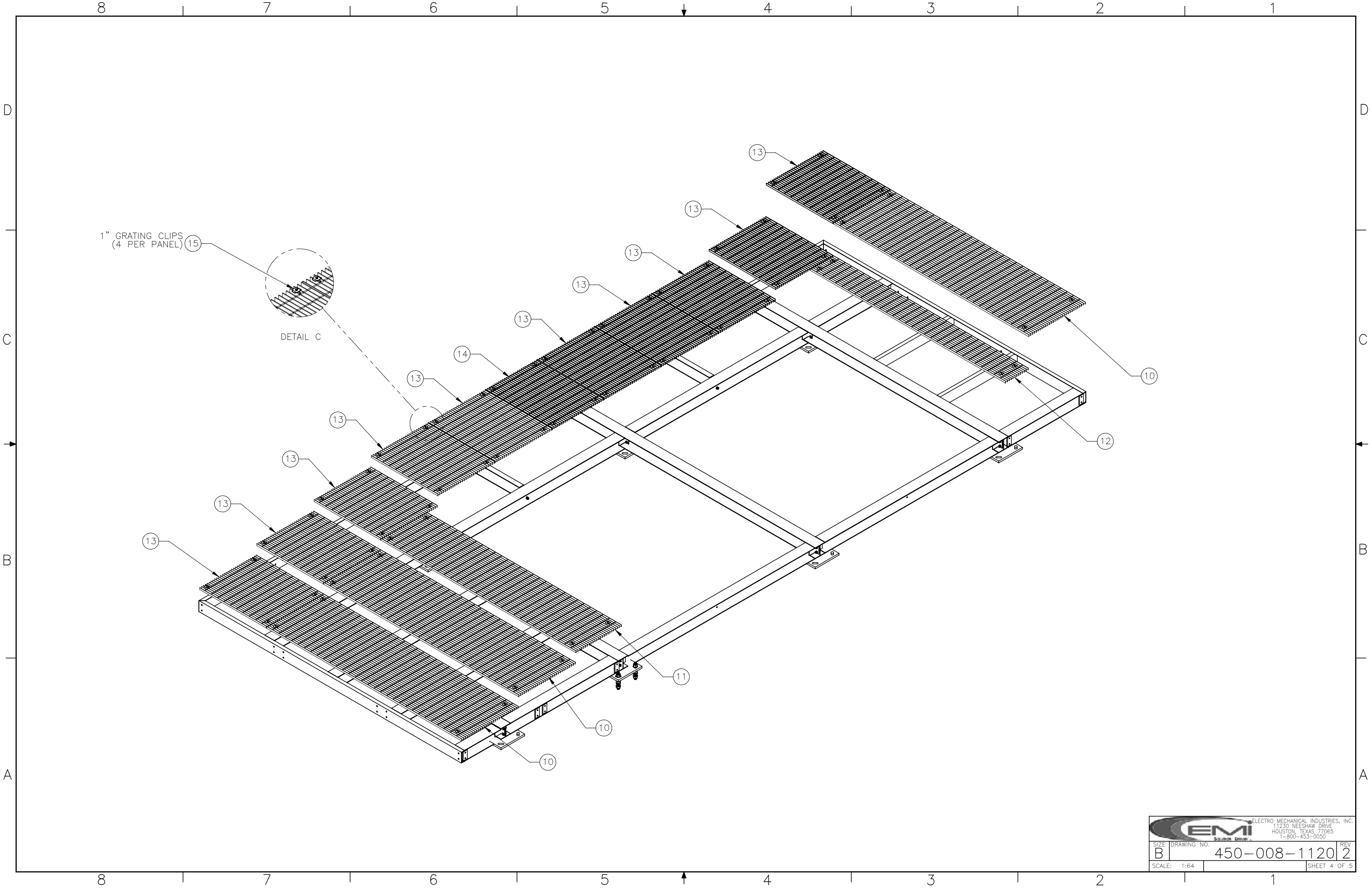
LOCATION OF 10' X 20' HUT



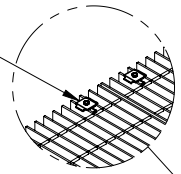
LEVELING HARDWARE



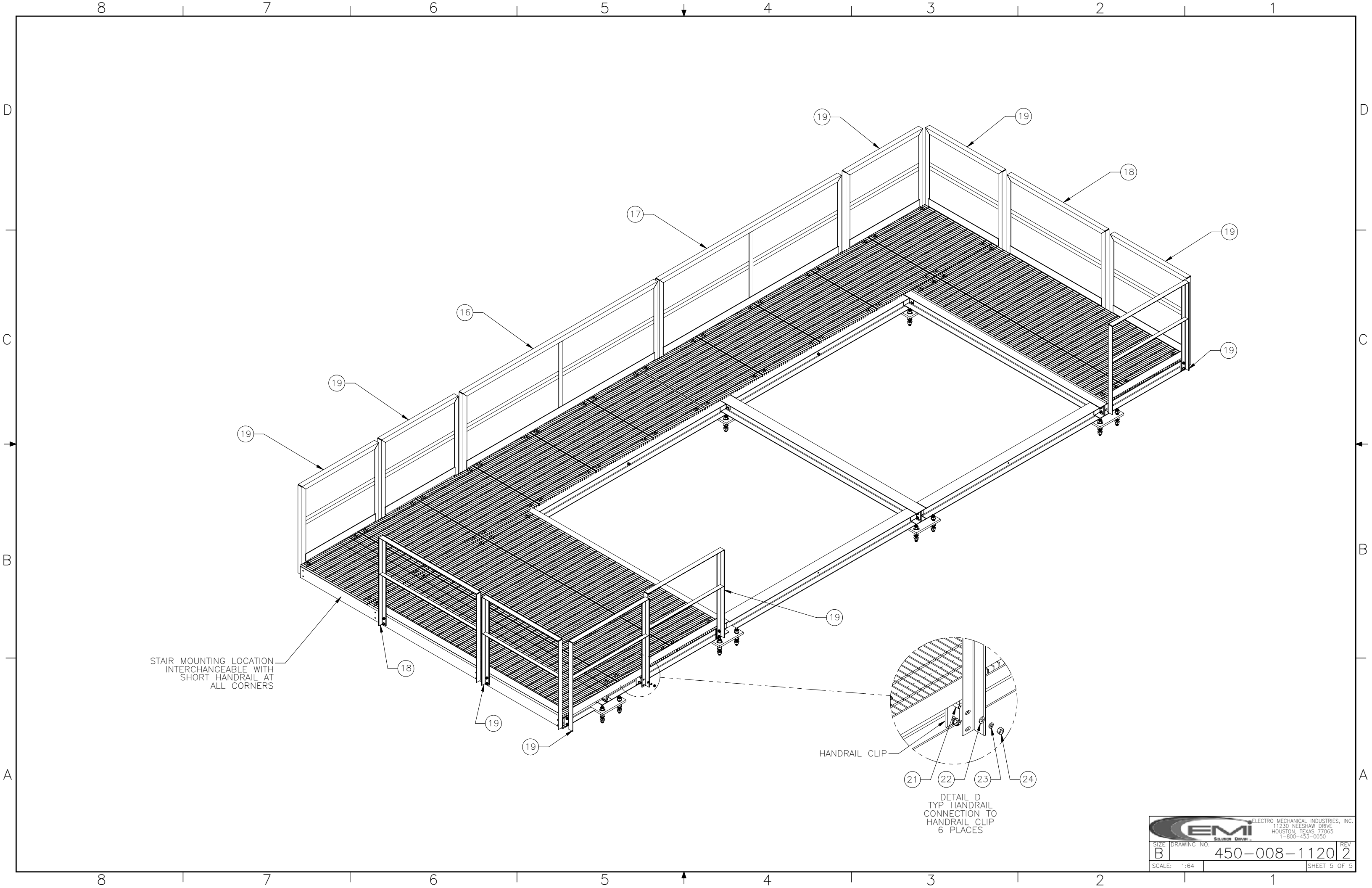
 ELECTRO MECHANICAL INDUSTRIES, INC. 11230 NEESHAW DRIVE HOUSTON, TEXAS 77065 1-800-453-0050		REV
		2
SIZE	DRAWING NO.	450-008-1120
B		
SCALE: 1:64		SHEET 3 OF 5



1" GRATING CLIPS
(4 PER PANEL) (15)



		ELECTRO MECHANICAL INDUSTRIES, INC. 11230 NEESHAW DRIVE HOUSTON, TEXAS 77065 1-800-453-0050	
SIZE	DRAWING NO.	REV	
B	450-008-1120	2	
SCALE: 1:64		SHEET 4 OF 5	




STAIR MOUNTING LOCATION
 INTERCHANGEABLE WITH
 SHORT HANDRAIL AT
 ALL CORNERS

HANDRAIL CLIP

21 22 23 24

DETAIL D
 TYP HANDRAIL
 CONNECTION TO
 HANDRAIL CLIP
 6 PLACES

		ELECTRO MECHANICAL INDUSTRIES, INC. 11230 NEESHAW DRIVE HOUSTON, TEXAS 77065 1-800-453-0050	
SIZE	DRAWING NO.	REV	
B	450-008-1120	2	
SCALE: 1:64	SHEET 5 OF 5		