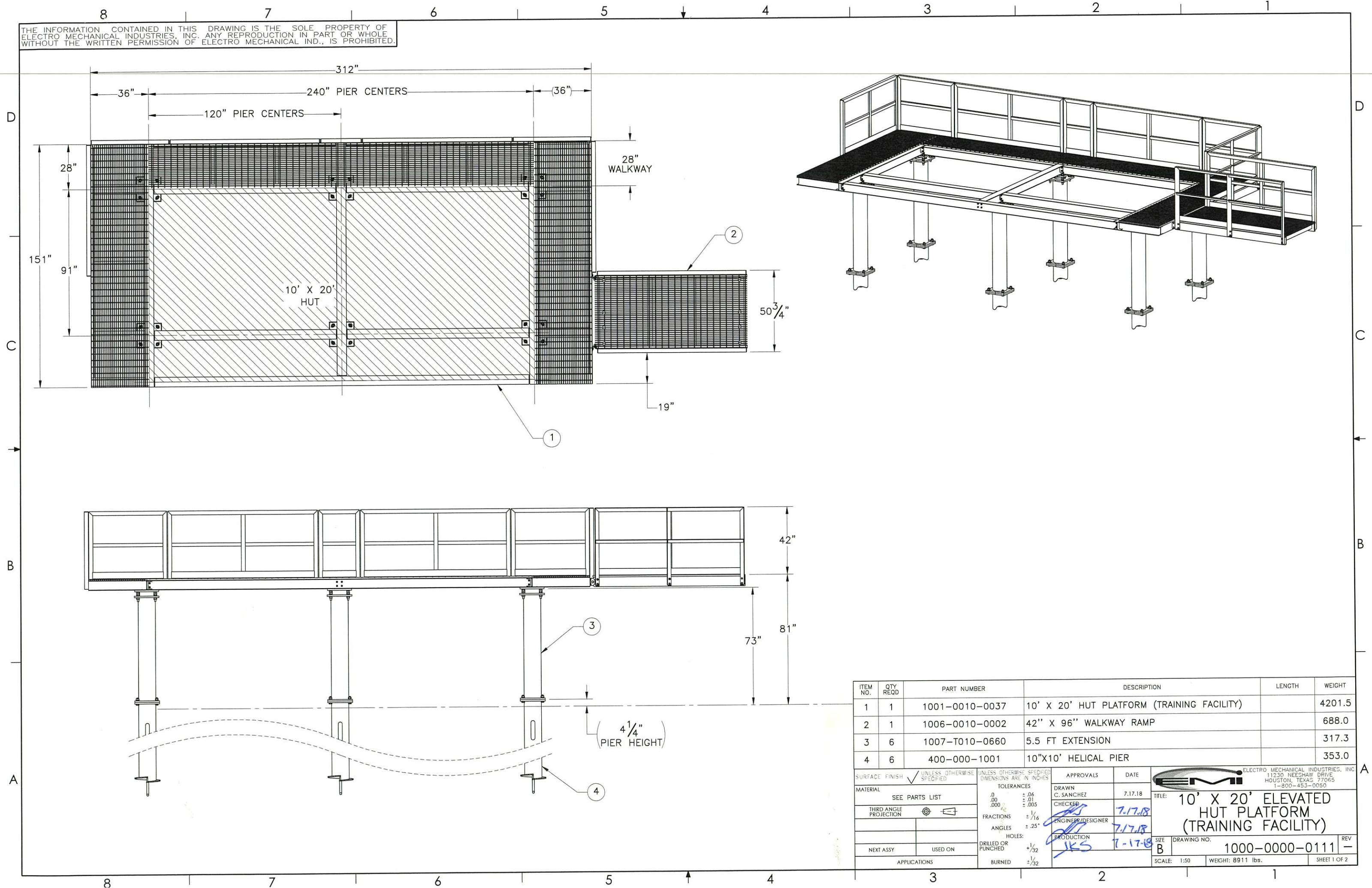


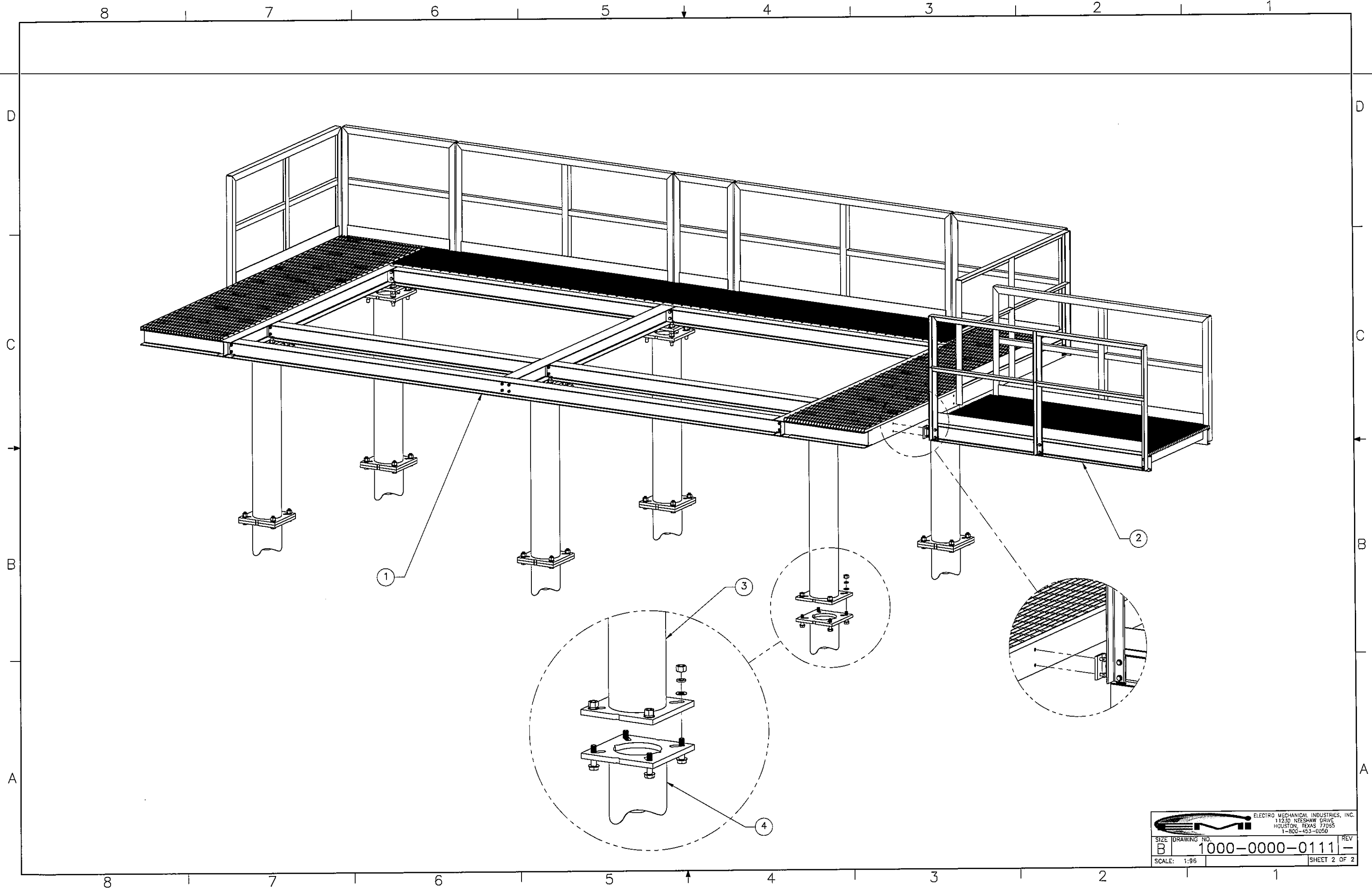
THE INFORMATION CONTAINED IN THIS DRAWING IS THE SOLE PROPERTY OF ELECTRO MECHANICAL INDUSTRIES, INC. ANY REPRODUCTION IN PART OR WHOLE WITHOUT THE WRITTEN PERMISSION OF ELECTRO MECHANICAL IND., IS PROHIBITED.




ITEM NO.	QTY REQD	PART NUMBER	DESCRIPTION	LENGTH	WEIGHT
1	1	1001-0010-0037	10' X 20' HUT PLATFORM (TRAINING FACILITY)		4201.5
2	1	1006-0010-0002	42" X 96" WALKWAY RAMP		688.0
3	6	1007-T010-0660	5.5 FT EXTENSION		317.3
4	6	400-000-1001	10"X10' HELICAL PIER		353.0

SURFACE FINISH <input checked="" type="checkbox"/> UNLESS OTHERWISE SPECIFIED		UNLESS OTHERWISE SPECIFIED DIMENSIONS ARE IN INCHES		APPROVALS	DATE
MATERIAL SEE PARTS LIST		TOLERANCES		DRAWN C. SANCHEZ	7.17.18
THIRD ANGLE PROJECTION		.0 ± .06 .000 ± .01 ± .005		CHECKED	7.17.18
NEXT ASSY		FRACTIONS ± 1/16		ENGINEER/DISIGNER	7.17.18
USED ON		ANGLES ± .25°		PRODUCTION	7-17-18
APPLICATIONS		HOLES: DRILLED OR PUNCHED +1/32		TITLE: 10' X 20' ELEVATED HUT PLATFORM (TRAINING FACILITY)	
		BURNED ± 1/32		DRAWING NO. 1000-0000-0111	
				SCALE: 1:50	
				WEIGHT: 8911 lbs.	
				SHEET 1 OF 2	

**EMI** ELECTRO MECHANICAL INDUSTRIES, INC.  
11230 NEESEDALE DRIVE  
HOUSTON, TEXAS 77065  
1-800-453-0050



		ELECTRO MECHANICAL INDUSTRIES, INC. 11230 NEESEMAN DRIVE HOUSTON, TEXAS 77095 1-800-453-0050	
SIZE	DRAWING NO.	REV	
B	1000-0000-0111	-	-
SCALE: 1:96	SHEET 2 OF 2		