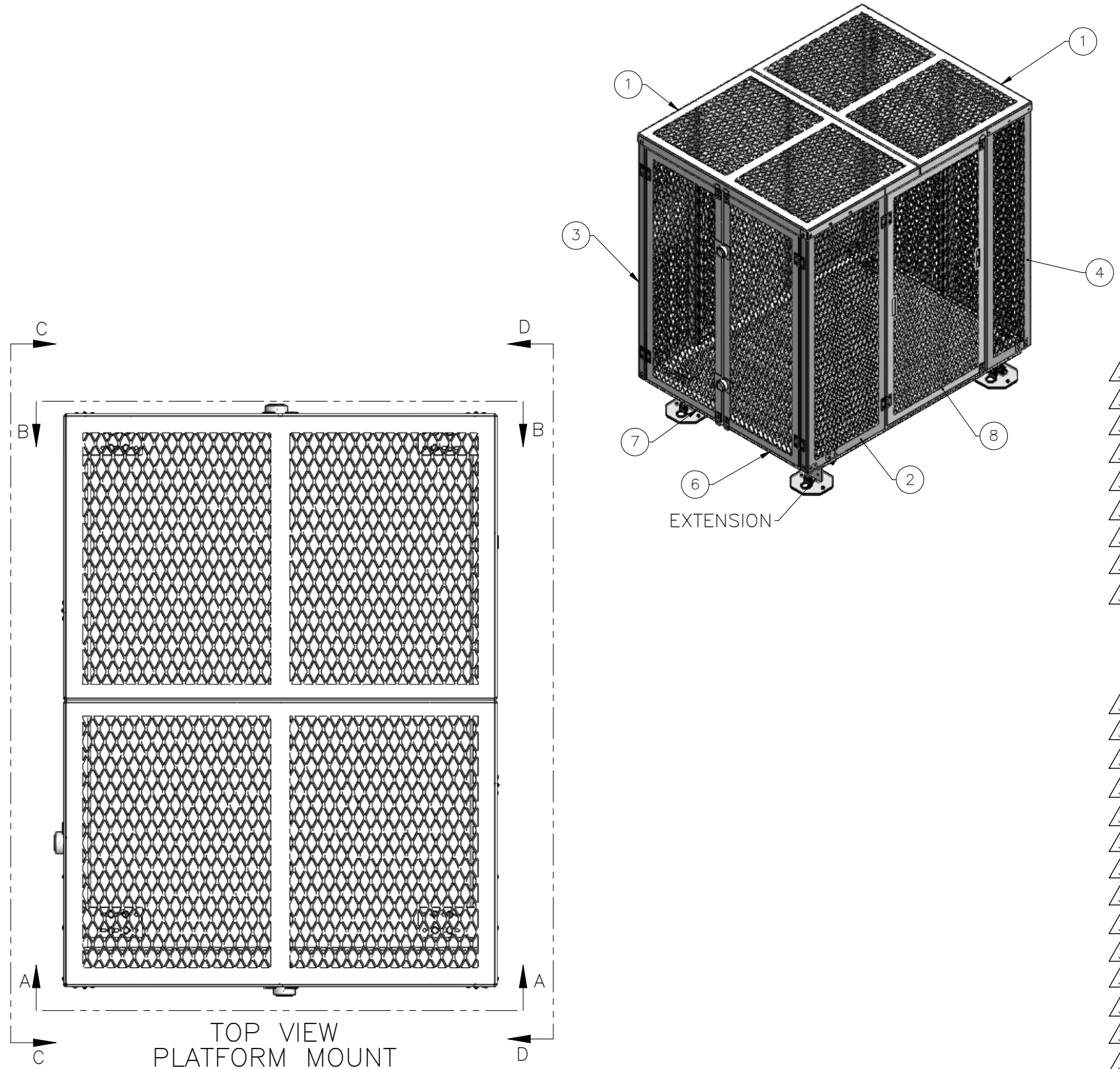


THE INFORMATION CONTAINED IN THIS DRAWING IS THE SOLE PROPERTY OF ELECTRO MECHANICAL INDUSTRIES, INC. ANY REPRODUCTION IN PART OR WHOLE WITHOUT THE WRITTEN PERMISSION OF ELECTRO MECHANICAL IND., IS PROHIBITED.

REVISIONS					
REV.	DCN #	DESCRIPTION	DATE	BY	APPROVED
3	01288	WIDTH TO 68" FROM 60" HINGES TO NON-LIFTOFF, HDW TO 3/8" CARRIAGE BOLTS, DOORS TO SINGLE FULL HEIGHT, BARN DOORS FRONT AND BACK, PLUG PANEL ADDED.	01/17/2024	JTR	JPB



ITEM NO.	QTY REQD	PART NUMBER	DESCRIPTION	LENGTH	WEIGHT
1	2	P-006-849	ROOF SECTION, SECURITY FRAME		105.93
2	1	P-006-850	FR CORNER POST, SECURITY FRAME	84"	112.55
3	1	W-002-702	FL CORNER POST, SECURITY FRAME WELDMENT		97.68
4	1	P-006-848	FL CORNER POST, SECURITY FRAME		88.08
5	1	P-006-851	RL CORNER POST, SECURITY FRAME		112.32
6	2	W-002-704	LARGE RIGHT DOOR WELDMENT, SECURITY FRAME		56.82
7	2	W-002-703	LARGE LEFT DOOR WELDMENT, SECURITY FRAME		58.80
8	1	P-006-854	40" DOOR,, SECURITY FRAME	80 7/8"	63.66
9	1	W-002-706	DOOR WELDMENT, SECURITY FRAME		60.86
10	1	P-006-912	RIGHT ANCHOR BRACKET, EXTENSION TO CAGE		0.85
11	1	P-006-911	LEFT ANCHOR BRACKET, EXTENSION TO CAGE		0.85
12	1	P-006-855	BASE SUPPORT, SECURITY FRAME		55.43
13	6	P-007-209	LOWER DOOR STOP	4 1/4"	0.43
14	6	P-007-210	UPPER DOOR STOP		0.50
15	2	P-007-212	ANGLE SUPPORT	84"	33.48
16	4	P-007-211	INSIDE ADJUSTMENT BRACKET	12"	4.47
17	1	P-007-208	PLUG PANEL	22"	16.42
18	5	002-OSP-0006	PUCKLOCK, ENCLOSED SHACKLE		2.11
19	12	P-007-217	HINGE, 4" X 4", FLAT BACK, SS, NONREMOVABLE PIN		0.68
20	16	002-OBG-0024	BOLT, HH, .500-13 X 2.50, GALV, A325, PT X 1.00	2 1/2"	0.1976
21	32	002-OFW-G002	WASHER, FLAT, .500, GALV, F436		0.03
22	16	002-OLW-G002	WASHER, SPLIT LOCK, .500, GALV		0.014
23	16	002-ONG-0010	NUT, HEX, .500-13, GALV, GR 2H		0.06
24	128	002-CBG-0005	BOLT, CB, .375-16 X 1.25, GALV, A307	1 1/4"	0.008
25	128	002-OFW-G036	WASHER, FLAT, .375, GALV, SAE		0.01
26	128	002-OLW-G005	WASHER, SPLIT LOCK, .375, GALV		0.01
27	128	002-ONG-0003	NUT, HEX, .375-16, GALV, GR 2H		0.030

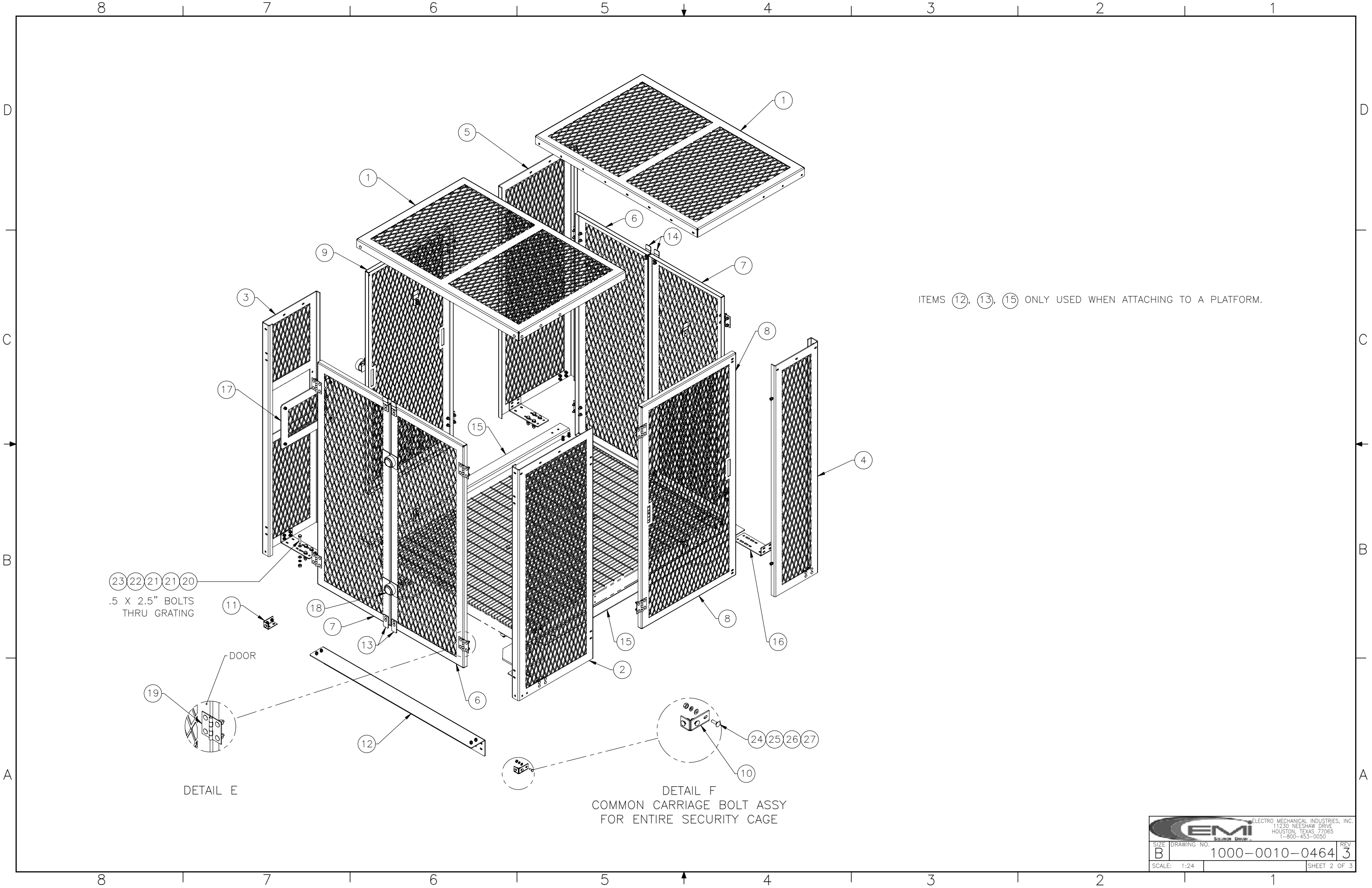
SURFACE FINISH <input checked="" type="checkbox"/> UNLESS OTHERWISE SPECIFIED		UNLESS OTHERWISE SPECIFIED DIMENSIONS ARE IN INCHES		APPROVALS		DATE	
MATERIAL SEE PARTS LIST		TOLERANCES .0 ±.06 .00 ±.015 .000 ±.005		DRAWN B. HUTSON		9/20/2023	
THIRD ANGLE PROJECTION		FRACTIONS ± 1/16		CHECKER J. ROACH		9/20/2023	
NEXT ASSY		ANGLES ±.25°		ENGINEER J. Breen		9/20/2023	
USED ON		HOLES: DRILLED OR PUNCHED ±1/32		PRODUCTION J. KERNER		9/20/2023	
APPLICATIONS		BURNED ±1/32					

ELECTRO MECHANICAL INDUSTRIES, INC.
11250 NEESESHAW DRIVE
HOUSTON, TEXAS 77065
1-800-453-0050

TITLE:
5'-8" X 7'-6" SECURITY CAGE

SIZE **B** DRAWING NO. **1000-0010-0464** REV **3**

SCALE: 1:20 WEIGHT: 1172.89 lbs. SHEET 1 OF 3

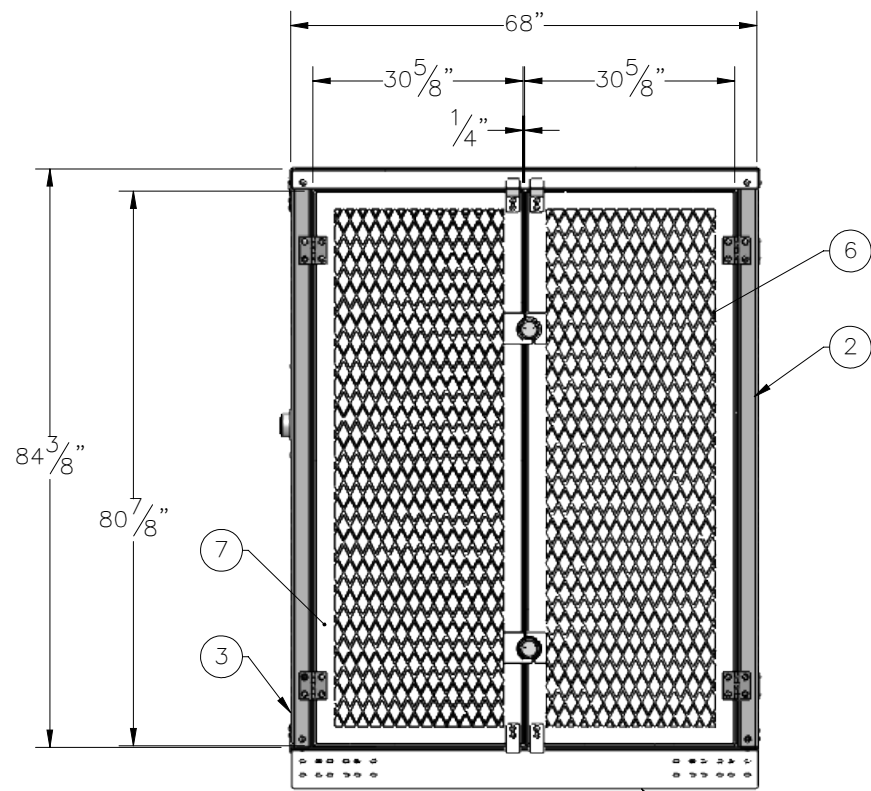


ITEMS (12), (13), (15) ONLY USED WHEN ATTACHING TO A PLATFORM.

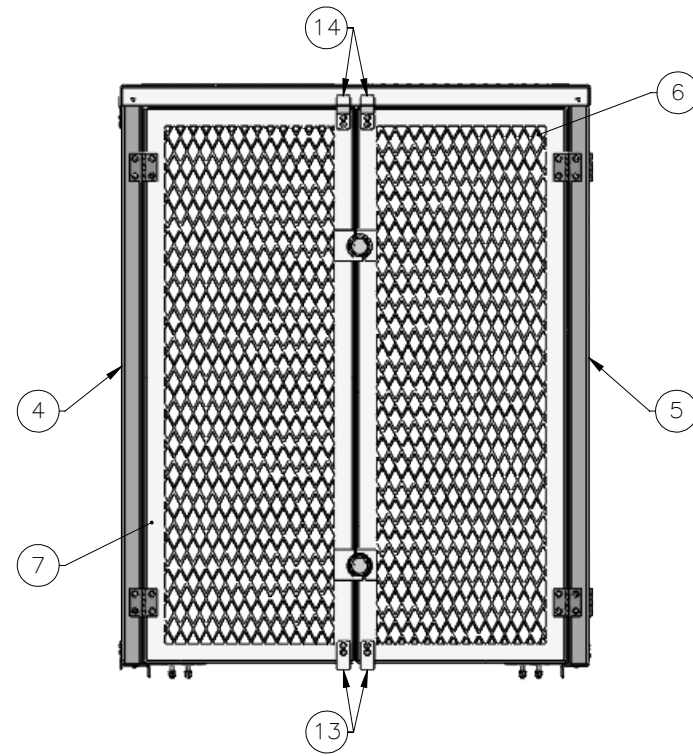
(23) (22) (21) (21) (20)
 .5 X 2.5" BOLTS
 THRU GRATING

DOOR
 (19)
 DETAIL E

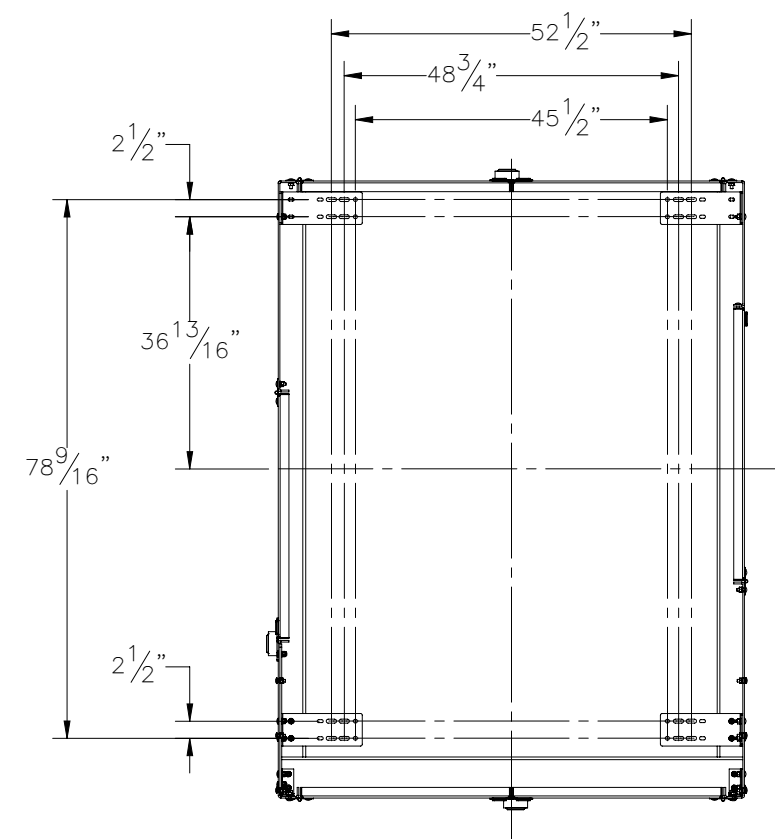
DETAIL F
 COMMON CARRIAGE BOLT ASSY
 FOR ENTIRE SECURITY CAGE



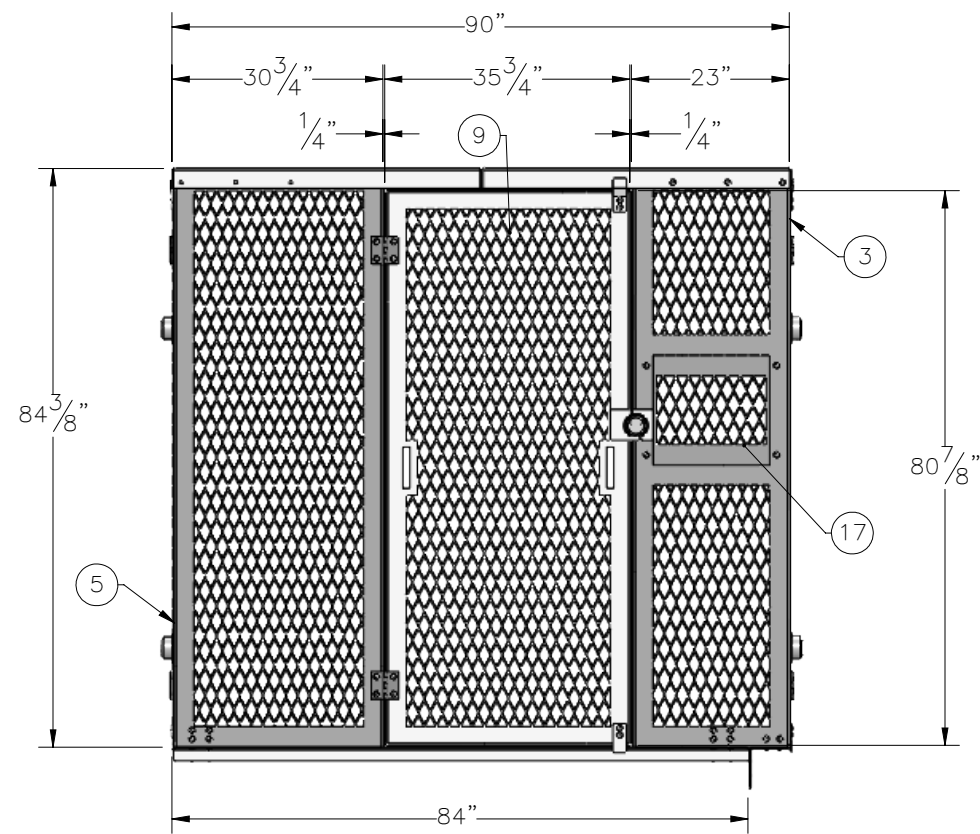
SECTION A-A
H FRAME ACCESS



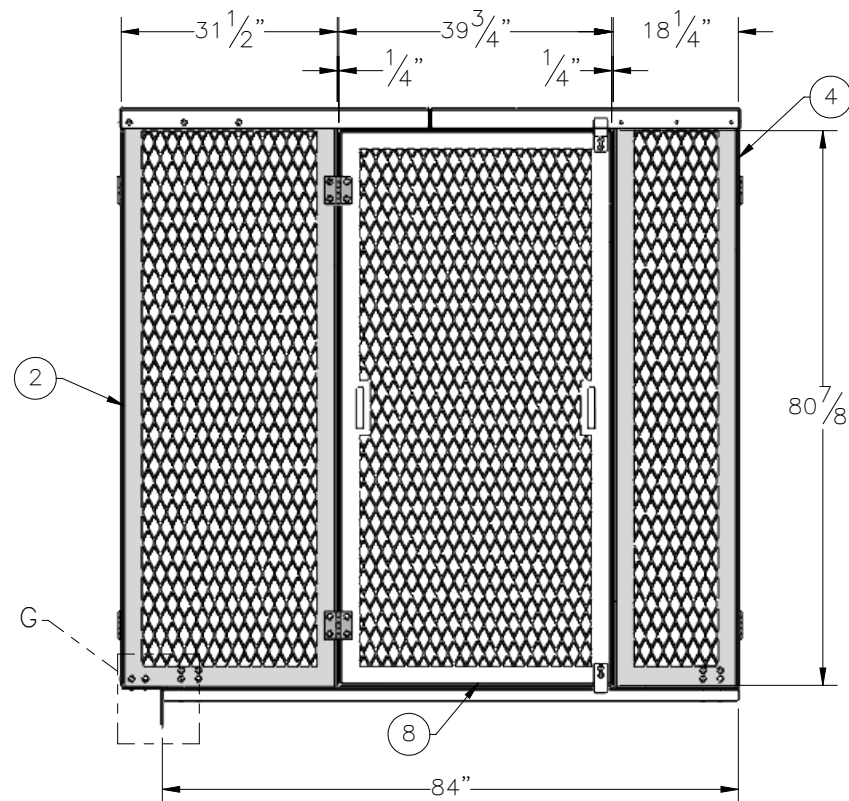
SECTION B-B
BACK OF CABINET



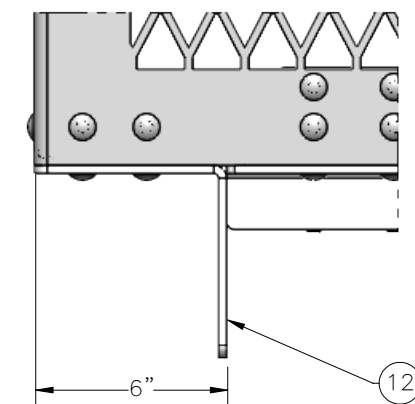
CONCRETE MOUNT
HOLE LOCATIONS (1/2" HARDWARE)
ROOF NOT SHOWN



SECTION C-C
CABINET OPENING
LEFT SIDE OF CABINET



SECTION D-D
ELEVATION VIEW
RIGHT SIDE OF CABINET



DETAIL G
EXTENSION