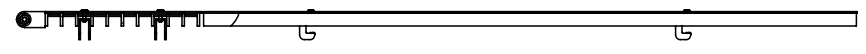
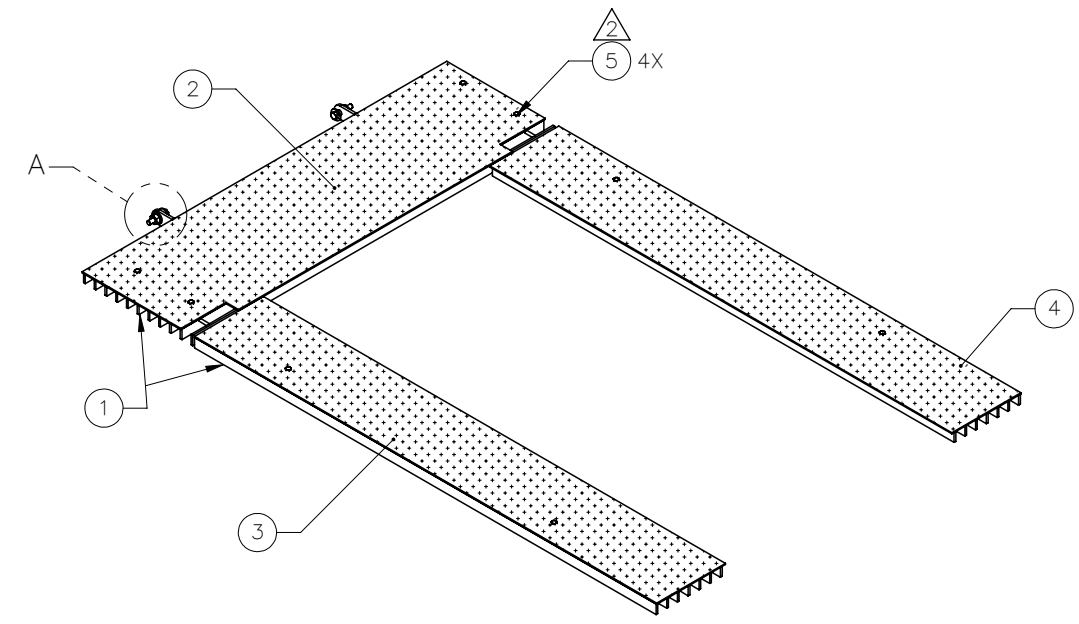
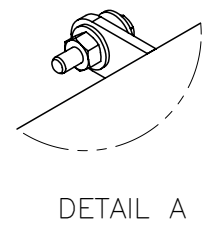
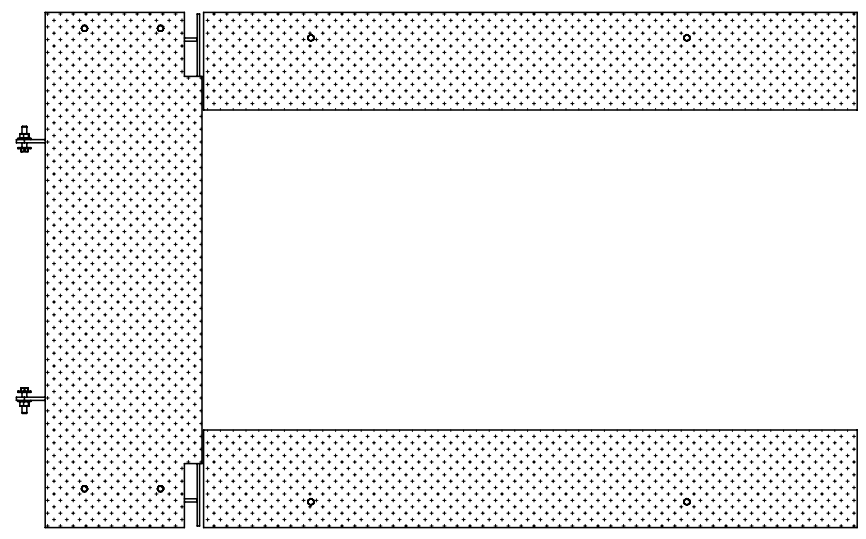



THE INFORMATION CONTAINED IN THIS DRAWING IS THE SOLE PROPERTY OF ELECTRO MECHANICAL INDUSTRIES, INC. ANY REPRODUCTION IN PART OR WHOLE WITHOUT THE WRITTEN PERMISSION OF ELECTRO MECHANICAL IND., IS PROHIBITED.

REVISIONS					
REV.	DCN #	DESCRIPTION	DATE	BY	APPROVED
2	01005	QUANTITY OF GRATING CLIPS CHANGED	2.26.2021	BLH	JPB



ITEM NO.	QTY.	PART NUMBER	DESCRIPTION	LENGTH	WEIGHT
1	1	1015-0000-0007	GRATING COVERS PACKAGE		65.3
2	1	P-000-592	DIAMOND PLATE #1	40 1/4"	2.04
3	1	P-000-593	DIAMOND PLATE #2	51 1/16"	1.66
4	1	P-000-594	DIAMOND PLATE #3	51 1/16"	1.66
5	4	000-MSG-0008	GRATING CLIP, 1", GALV.		0.20

SURFACE FINISH <input checked="" type="checkbox"/> UNLESS OTHERWISE SPECIFIED		UNLESS OTHERWISE SPECIFIED DIMENSIONS ARE IN INCHES		APPROVALS		DATE	
MATERIAL SEE PARTS LIST		TOLERANCES		DRAWN T. PETERS		1.29.16	
THIRD ANGLE PROJECTION		.0 ± .06 .00 ± .01 .000 ± .005		CHECKED D. HUGHES		1.29.16	
NEXT ASSY		FRAGMENTS ± 1/16 ANGLES ± .25°		ENGINEER/DESIGNER D. HUGHES		1.29.16	
USED ON		HOLES: DRILLED OR PUNCHED ± 1/32		PRODUCTION J. CRAIG		1.29.16	
APPLICATIONS		BURNED ± 1/32					



ELECTRO MECHANICAL INDUSTRIES, INC.  
11230 NEESESHAW DRIVE  
HOUSTON, TEXAS 77065  
1-800-453-0050

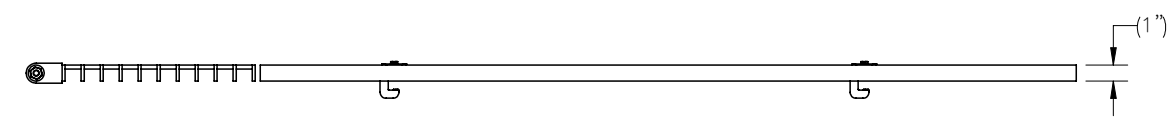
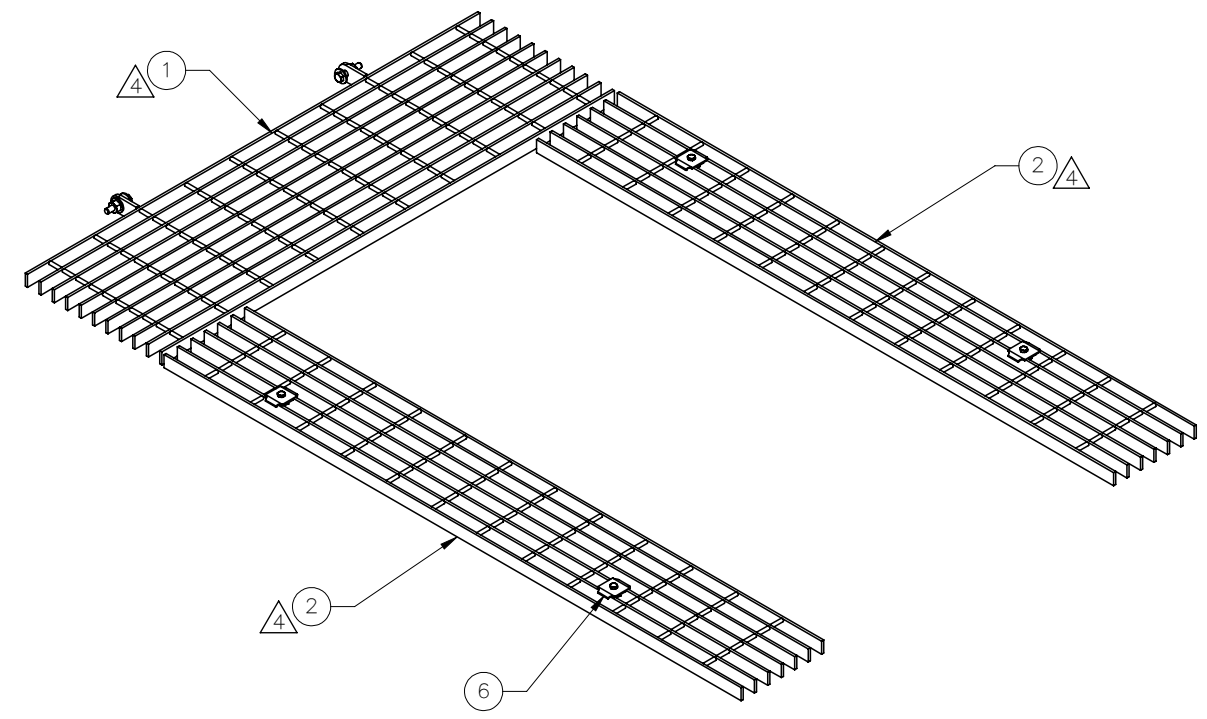
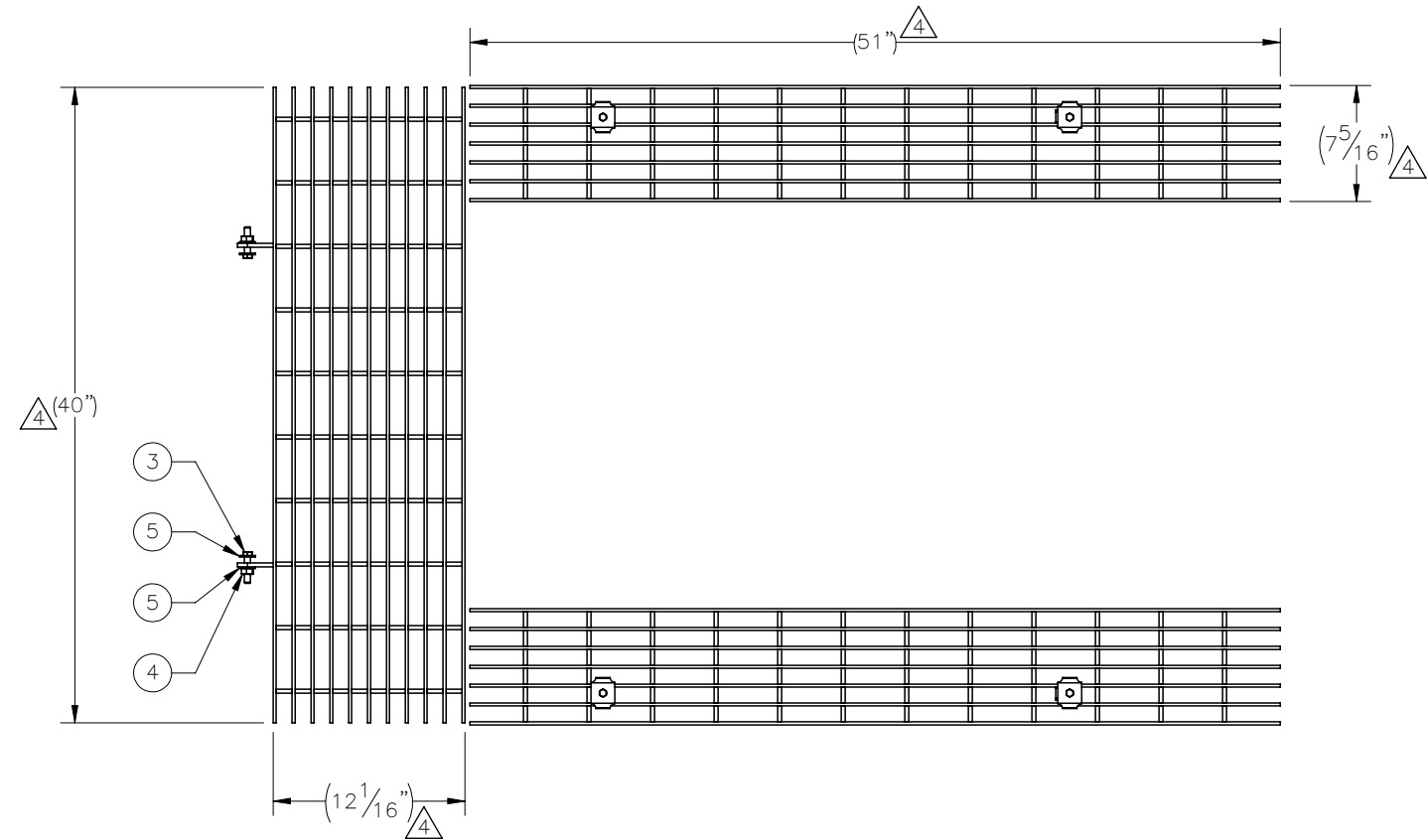
TITLE: **GRATING AND DIAMOND PLATE COVERS**

SIZE **B** DRAWING NO. **1015-0000-0009** REV **2**


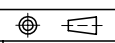
SCALE: 1:15 WEIGHT: 71.5 lbs. SHEET 1 OF 1

THE INFORMATION CONTAINED IN THIS DRAWING IS THE SOLE PROPERTY OF ELECTRO MECHANICAL INDUSTRIES, INC. ANY REPRODUCTION IN PART OR WHOLE WITHOUT THE WRITTEN PERMISSION OF ELECTRO MECHANICAL IND., IS PROHIBITED.

REVISIONS					
REV.	DCN #	DESCRIPTION	DATE	BY	APPROVED
4	01005	UPDATED TO NEW EMI STANDARDS	2.26.2021	BLH	JPB



ITEM NO.	QTY.	PART NUMBER	DESCRIPTION	LENGTH	WEIGHT
1	1	W-000-129	HINGED GRATING COVER		24.6
2	2	T010-0073-0510	GRATING PANEL, 1" SMOOTH, 7 BAR, 7.3125 WIDTH	51"	19.9
3	2	002-0BG-0002	BOLT, HEX HD, .375-16UNC X 1.75 LG, GR 5, GALV		0.01
4	2	002-0NG-0003	NUT, HEX, .375-16UNC, GR 2H, GALV		0.03
5	4	002-0FW-G005	WASHER, FLAT, .375, USS, GALV		0.02
6	4	000-MSG-0008	GRATING CLIP, 1", GALV.		0.20

SURFACE FINISH <input checked="" type="checkbox"/> UNLESS OTHERWISE SPECIFIED		UNLESS OTHERWISE SPECIFIED DIMENSIONS ARE IN INCHES		APPROVALS		DATE		 EMI PRODUCTS, LLC 11230 NEESHAW DRIVE HOUSTON, TEXAS 77065 1-800-453-0050	
MATERIAL SEE PARTS LIST		TOLERANCES		DRAWN J. CRITELLI		12.2.15			
THIRD ANGLE PROJECTION 		.0 ± .06		CHECKED D. HUGHES		12.2.15		TITLE: <b>GRATING COVERS PACKAGE</b>	
		.000 ± .005		ENGINEER/DESIGNER J. CRITELLI		12.2.15			
NEXT ASSY		HOLES: DRILLED OR PUNCHED		PRODUCTION J. CRAIG		12.3.15		SIZE: B DRAWING NO. 1015-0000-0007 REV. 4	
APPLICATIONS		BURNED ± 1/32		SCALE: 1:12		WEIGHT: 65.3 lbs.			