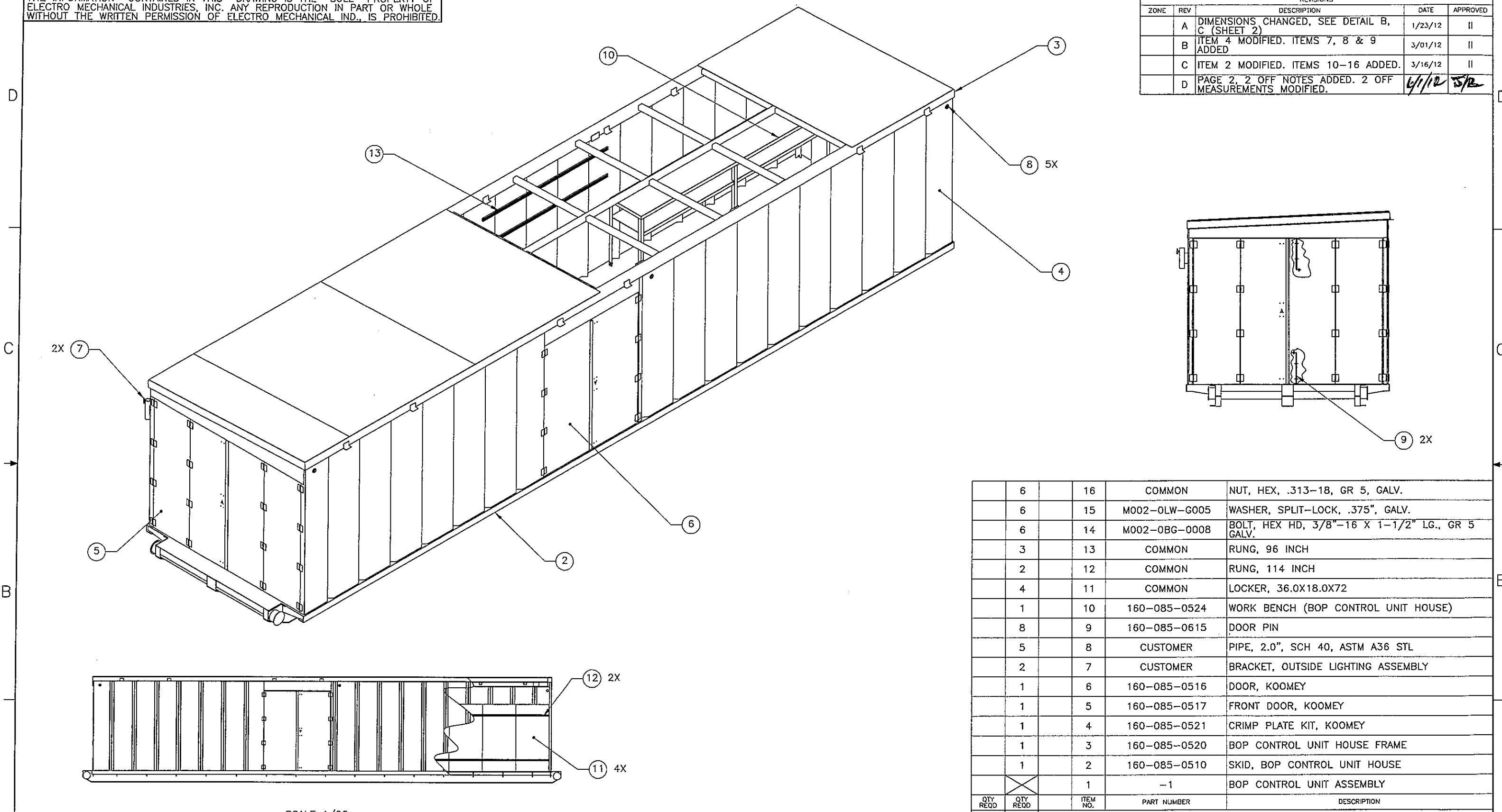


THE INFORMATION CONTAINED IN THIS DRAWING IS THE SOLE PROPERTY OF ELECTRO MECHANICAL INDUSTRIES, INC. ANY REPRODUCTION IN PART OR WHOLE WITHOUT THE WRITTEN PERMISSION OF ELECTRO MECHANICAL IND., IS PROHIBITED.

REVISIONS				
ZONE	REV	DESCRIPTION	DATE	APPROVED
	A	DIMENSIONS CHANGED, SEE DETAIL B, C (SHEET 2)	1/23/12	II
	B	ITEM 4 MODIFIED. ITEMS 7, 8 & 9 ADDED	3/01/12	II
	C	ITEM 2 MODIFIED. ITEMS 10-16 ADDED.	3/16/12	II
	D	PAGE 2, 2 OFF NOTES ADDED. 2 OFF MEASUREMENTS MODIFIED.	6/1/12	5/12



QTY REQD	QTY REQD	ITEM NO.	PART NUMBER	DESCRIPTION
		6	16	COMMON NUT, HEX, .313-18, GR 5, GALV.
		6	15	M002-0LW-G005 WASHER, SPLIT-LOCK, .375", GALV.
		6	14	M002-0BG-0008 BOLT, HEX HD, 3/8"-16 X 1-1/2" LG., GR 5 GALV.
		3	13	COMMON RUNG, 96 INCH
		2	12	COMMON RUNG, 114 INCH
		4	11	COMMON LOCKER, 36.0X18.0X72
		1	10	160-085-0524 WORK BENCH (BOP CONTROL UNIT HOUSE)
		8	9	160-085-0615 DOOR PIN
		5	8	CUSTOMER PIPE, 2.0", SCH 40, ASTM A36 STL
		2	7	CUSTOMER BRACKET, OUTSIDE LIGHTING ASSEMBLY
		1	6	160-085-0516 DOOR, KOOMEY
		1	5	160-085-0517 FRONT DOOR, KOOMEY
		1	4	160-085-0521 CRIMP PLATE KIT, KOOMEY
		1	3	160-085-0520 BOP CONTROL UNIT HOUSE FRAME
		1	2	160-085-0510 SKID, BOP CONTROL UNIT HOUSE
			1	-1 BOP CONTROL UNIT ASSEMBLY

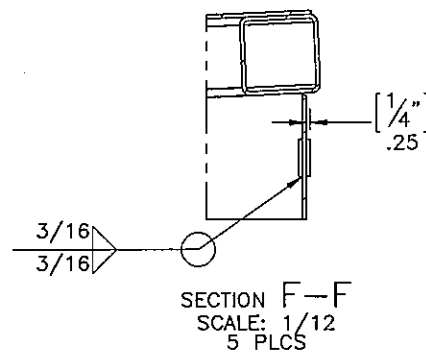
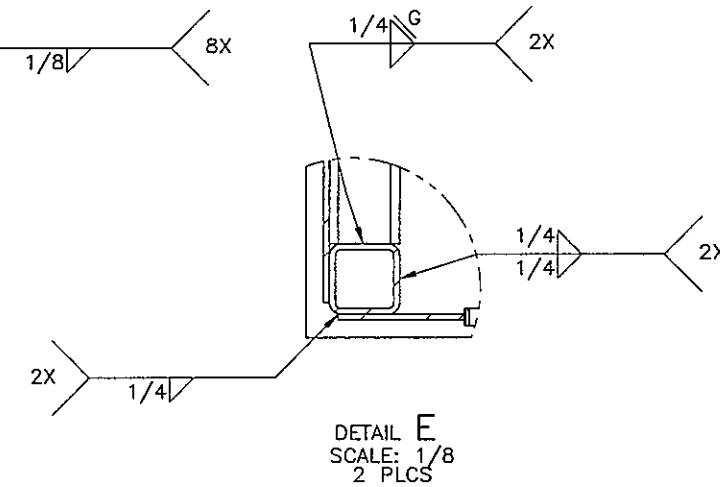
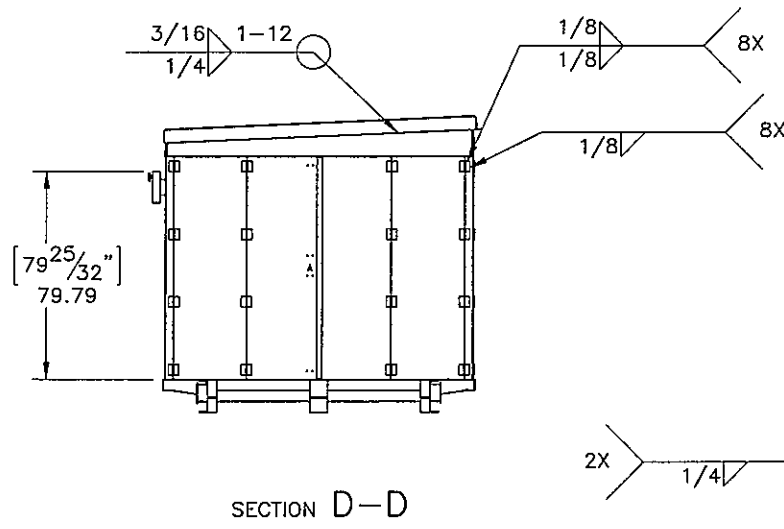
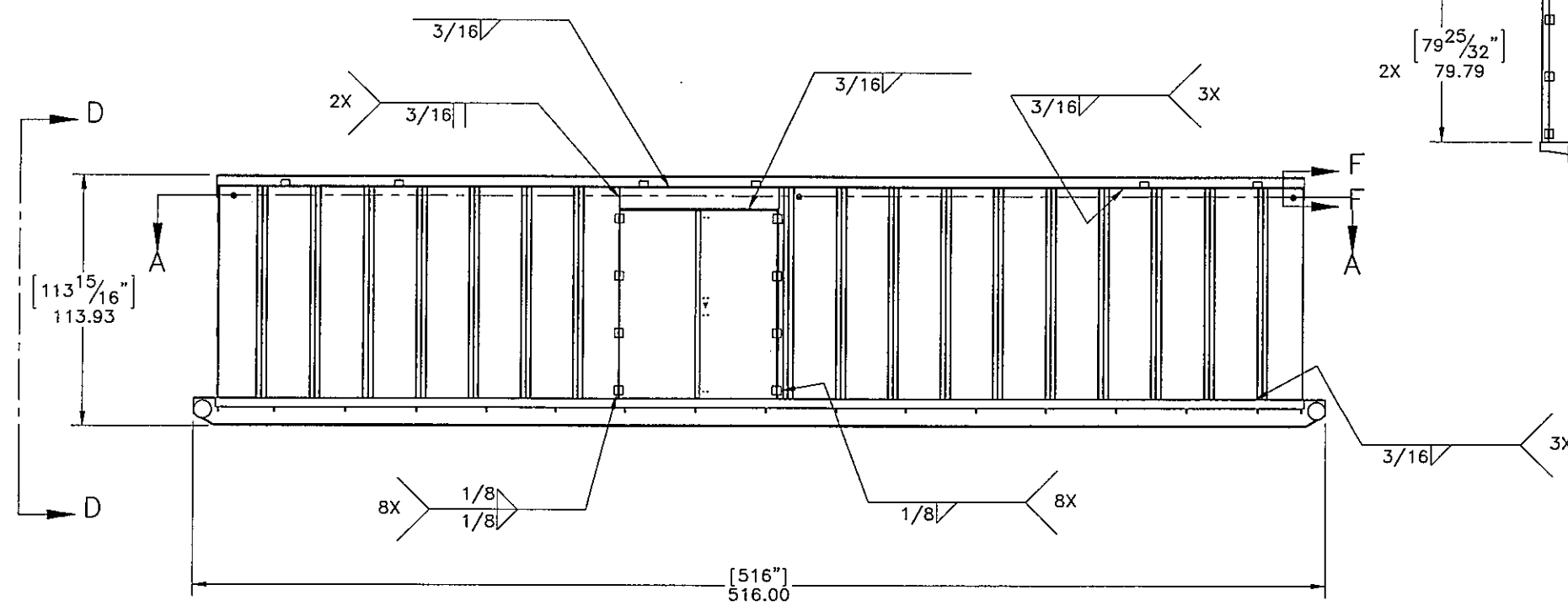
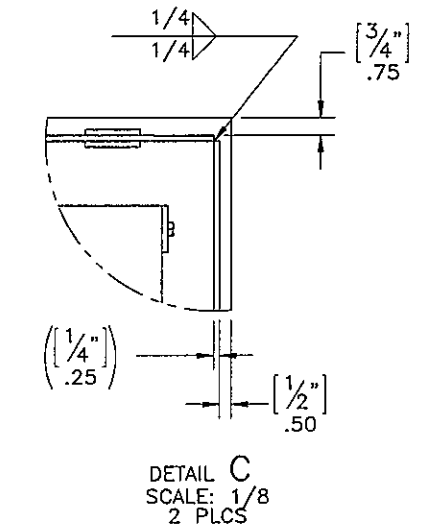
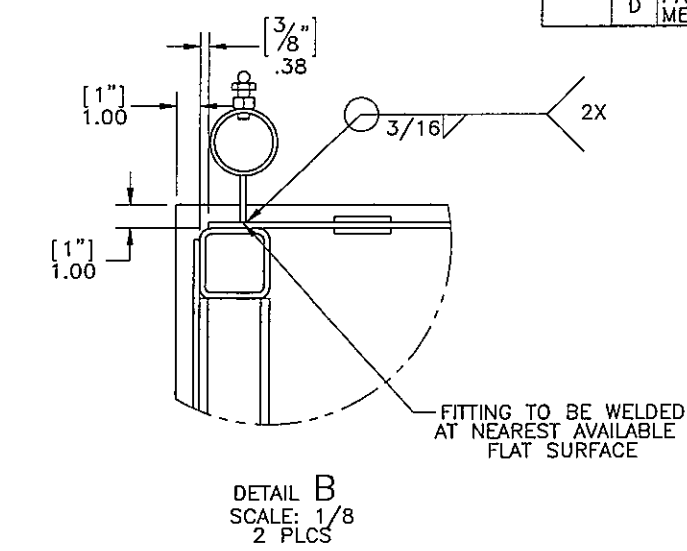
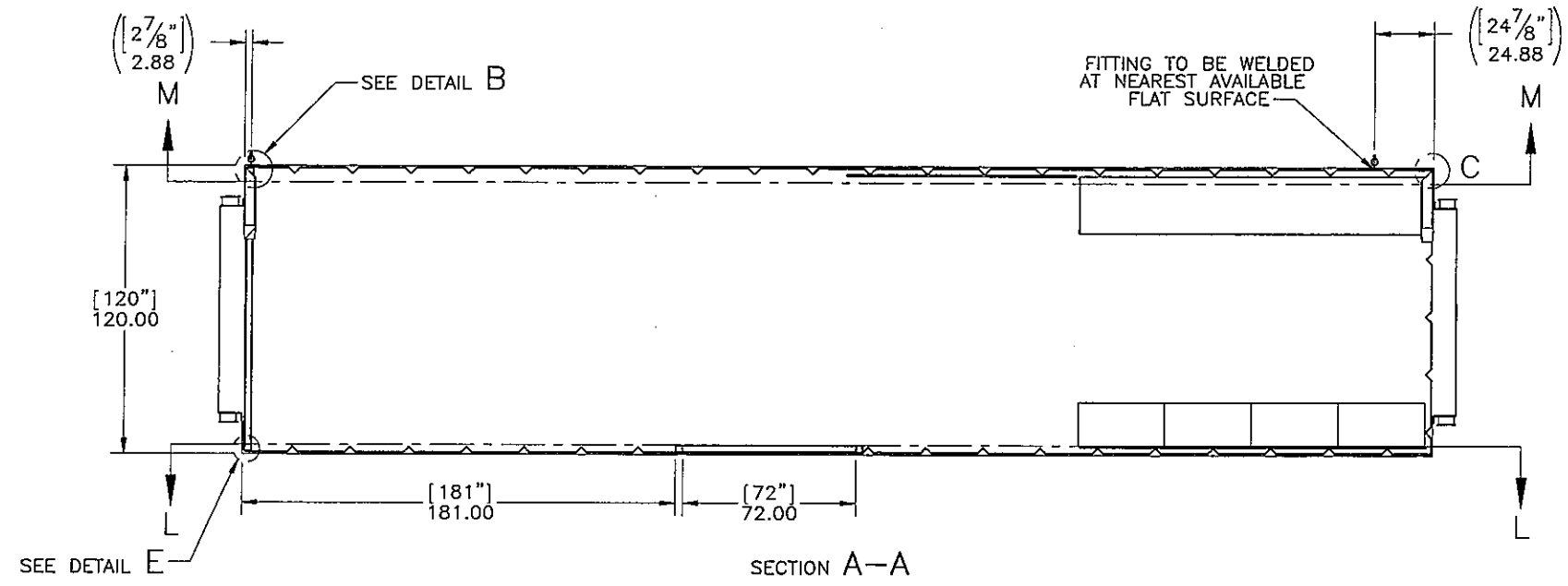
SCALE 1/96


-1 BOP CONTROL UNIT HOUSE ASSEMBLY

C	D	D	REV	REV STATUS
3	2	1	SHEET	OF SHEETS

SURFACE FINISH <input checked="" type="checkbox"/> UNLESS OTHERWISE SPECIFIED		UNLESS OTHERWISE SPECIFIED DIMENSIONS ARE IN INCHES		APPROVALS		DATE	
MATERIAL		TOLERANCES		DRAWN		1/18/12	
THIRD ANGLE PROJECTION		.0 ± .1		J ROYALL		1/18/12	
		.00 ± .01		CHECKED		1/18/12	
		.000 ± .005		I ILYK		1/18/12	
		ANGLES : .05°		ENGINEER/DESIGNER		1/18/12	
		HOLES:		I ILYK		1/18/12	
		.013 THRU .125 +.005		PRODUCTION		1/18/12	
		.126 THRU 1.500 +.012		JK SUNDERLAND		1/18/12	
		-.003					
NEXT ASSY		USED ON		ELECTRO MECHANICAL INDUSTRIES, INC.		11230 NEESAWAY DRIVE HOUSTON, TEXAS 77065 1-800-453-0050	
APPLICATIONS				TITLE:		BOP CONTROL UNIT HOUSE ASSEMBLY	
				SIZE		DRAWING NO. 160-085-0500	
				SCALE: 1/48		SHEET 1 OF 3	

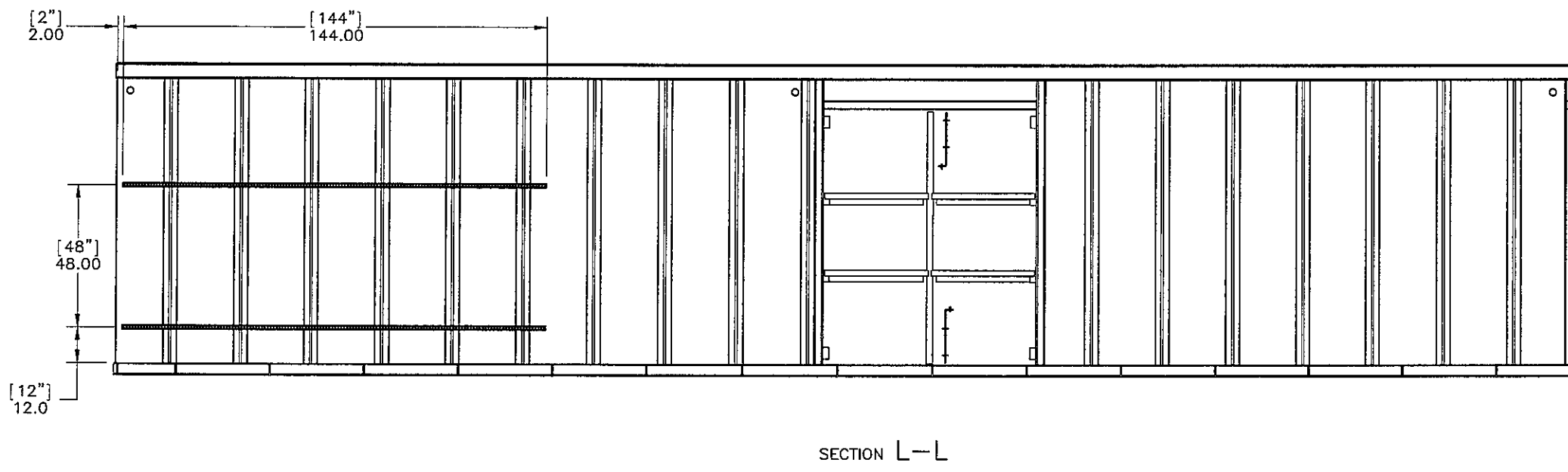
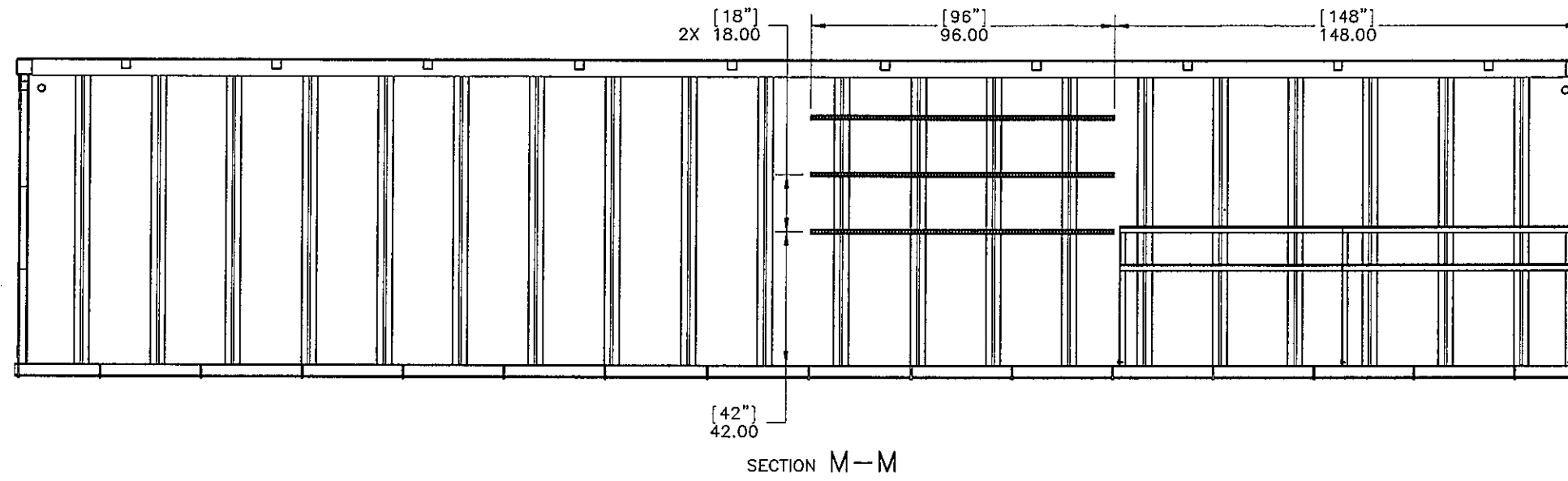
REVISIONS				
ZONE	REV	DESCRIPTION	DATE	APPROVED
	A	DIMENSIONS CHANGED, SEE DETAIL B, C (SHEET 2)	1/23/12	II
	B	ITEM 4 MODIFIED. ITEMS 7, 8 & 9 ADDED	3/03/12	II
	C	ITEM 2 MODIFIED. ITEMS 10-16 ADDED.	3/16/12	II
	D	PAGE 2, 2 OFF NOTES ADDED. 2 OFF MEASUREMENTS MODIFIED.	6/1/12	SR





ELECTRO MECHANICAL INDUSTRIES, INC.
 11230 NEEBAY DRIVE
 HOUSTON, TEXAS 77065
 1-800-453-0050

SIZE	DRAWING NO.	REV
B	160-085-0500	C
SCALE: 1/72		SHEET 2 OF 3

REVISIONS				
ZONE	REV	DESCRIPTION	DATE	APPROVED
	C	ITEM 2 MODIFIED. ITEMS 10-16 ADDED.	3/16/12	<i>[Signature]</i>




 ELECTRO MECHANICAL INDUSTRIES, INC.
 11230 NEESHAW DRIVE
 HOUSTON, TEXAS 77065
 1-800-453-0050

SIZE	DRAWING NO.	REV
B	160-085-0500	C
SCALE: 1/48	SHEET 3 OF 3	