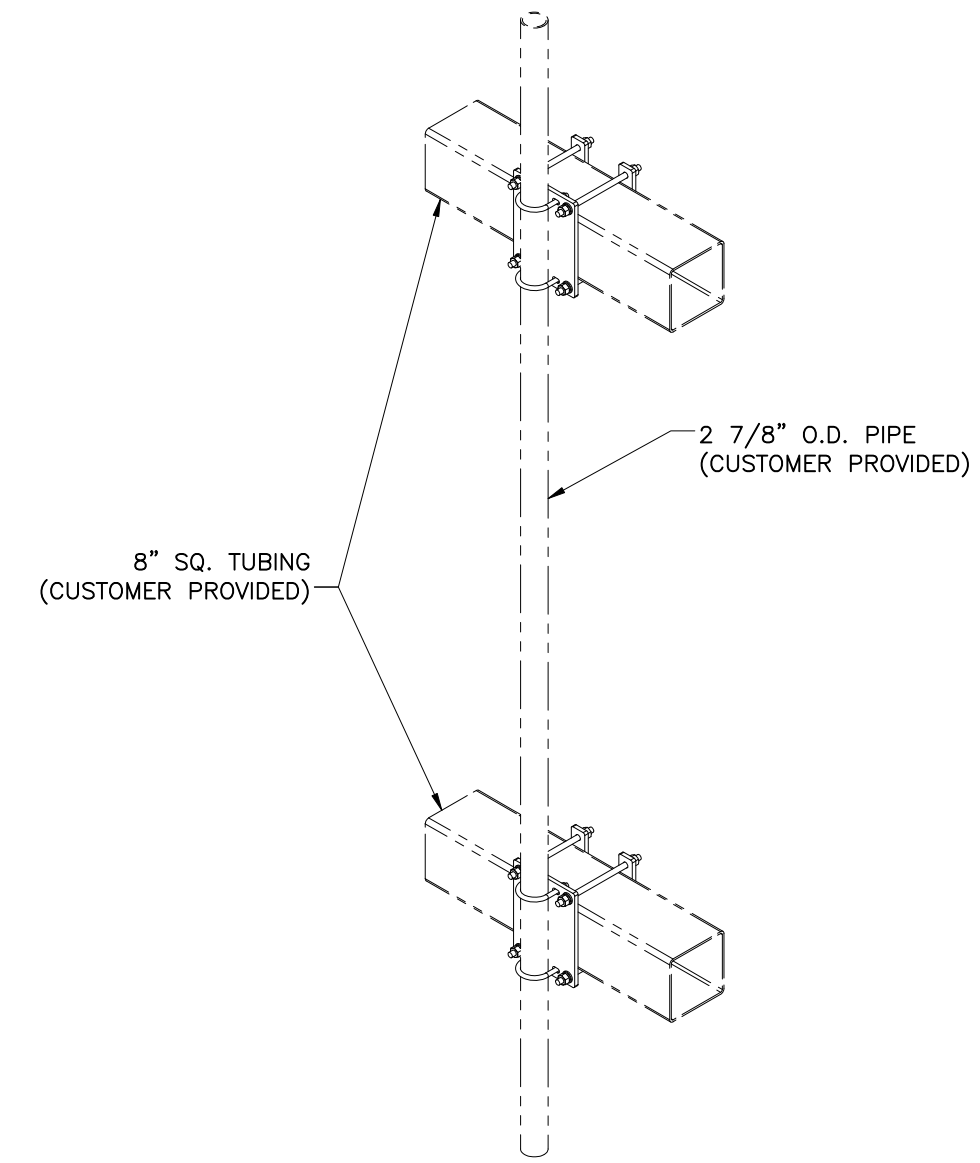
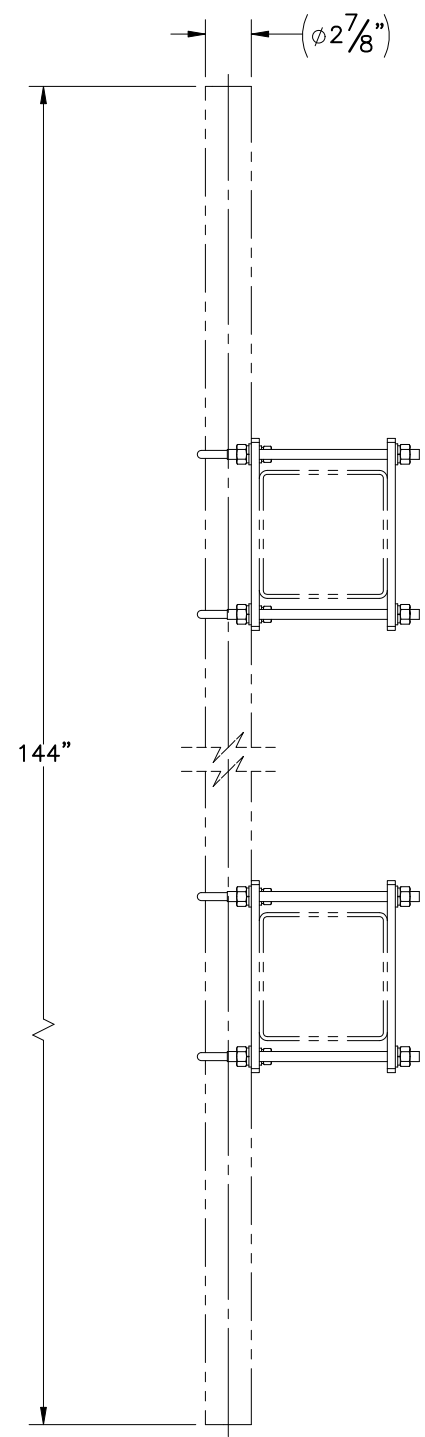
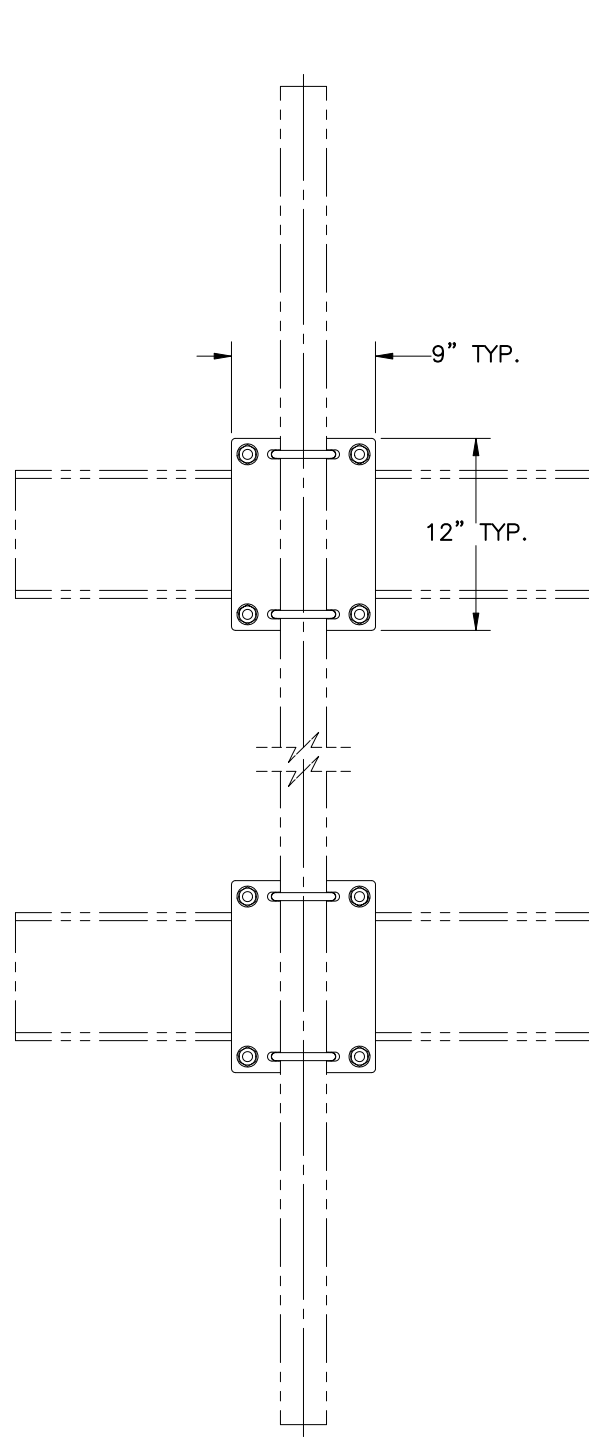

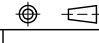


THE INFORMATION CONTAINED IN THIS DRAWING IS THE SOLE PROPERTY OF ELECTRO MECHANICAL INDUSTRIES, INC. ANY REPRODUCTION IN PART OR WHOLE WITHOUT THE WRITTEN PERMISSION OF ELECTRO MECHANICAL IND., IS PROHIBITED.



ITEM NO.	QTY REQD	PART NUMBER	DESCRIPTION	LENGTH	WEIGHT
1	2	P-007-403	CROSSOVER PLATE		14.81
2	4	P-007-418	BACK PLATE		3.29
3	8	002-OAT-H044	AT, .625-11 X 12.0, GALV, GR B7	12"	1.05
4	16	002-OFW-G004	WASHER, FLAT, .625, GALV, F436		0.04
5	16	002-OLW-G004	WASHER, SPLIT LOCK, .625, GALV		0.03
6	16	002-ONG-0004	NUT, HEX, .625-11, GALV, GR 2H		0.115
7	4	002-00U-G044	U-BOLT, .500-13 X 3.000 ID X 4.500 H X 1.63 TL, GALV 4 1/2"		0.642
8	8	002-OFW-G002	WASHER, FLAT, .500, GALV, F436		0.03
9	8	002-OLW-G002	WASHER, SPLIT LOCK, .500, GALV		0.014
10	8	002-ONG-0010	NUT, HEX, .500-13, GALV, GR 2H		0.06

SURFACE FINISH <input checked="" type="checkbox"/> UNLESS OTHERWISE SPECIFIED		UNLESS OTHERWISE SPECIFIED DIMENSIONS ARE IN INCHES		APPROVALS	DATE	 ELECTRO MECHANICAL INDUSTRIES, INC. 11250 NEESEHAW DRIVE HOUSTON, TEXAS 77065 1-800-453-0050
MATERIAL	SEE PARTS LIST	TOLERANCES		DRAWN	3/22/2024	
THIRD ANGLE PROJECTION		.0 ±.06 .00 ±.015 .000 ±.005		CHECKER	3/22/2024	TITLE: CROSSOVER PLATE KIT, 2.5" PIPE TO 8" SQ. TUBE
		FRACTIONS ± 1/16 ANGLES ± .25°		ENGINEER	3/22/2024	
NEXT ASSY	USED ON	HOLES: DRILLED OR PUNCHED ± 1/32		PRODUCTION	3/22/2024	
APPLICATIONS		BURNED ± 1/32		J. KERNER		SIZE B DRAWING NO. 1012-0000-0138 REV 0 SCALE: 1:12 WEIGHT: 57.48 lbs. SHEET 1 OF 2

