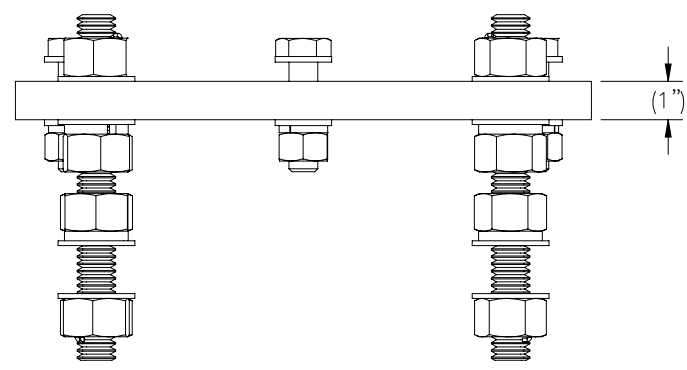
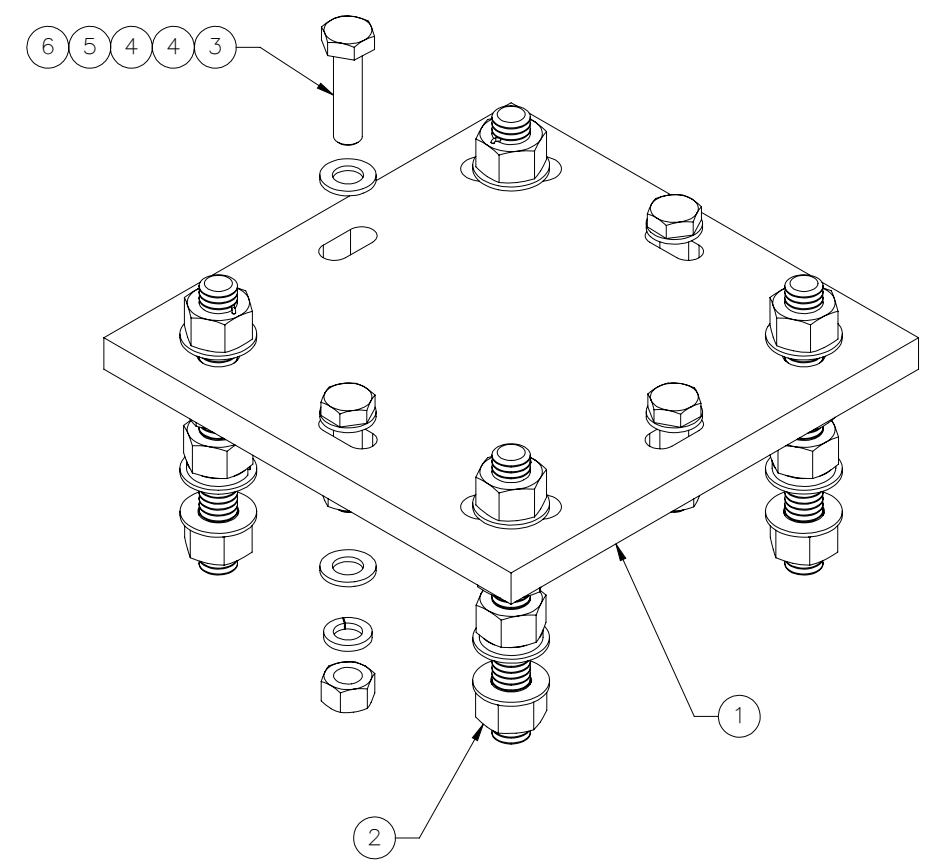
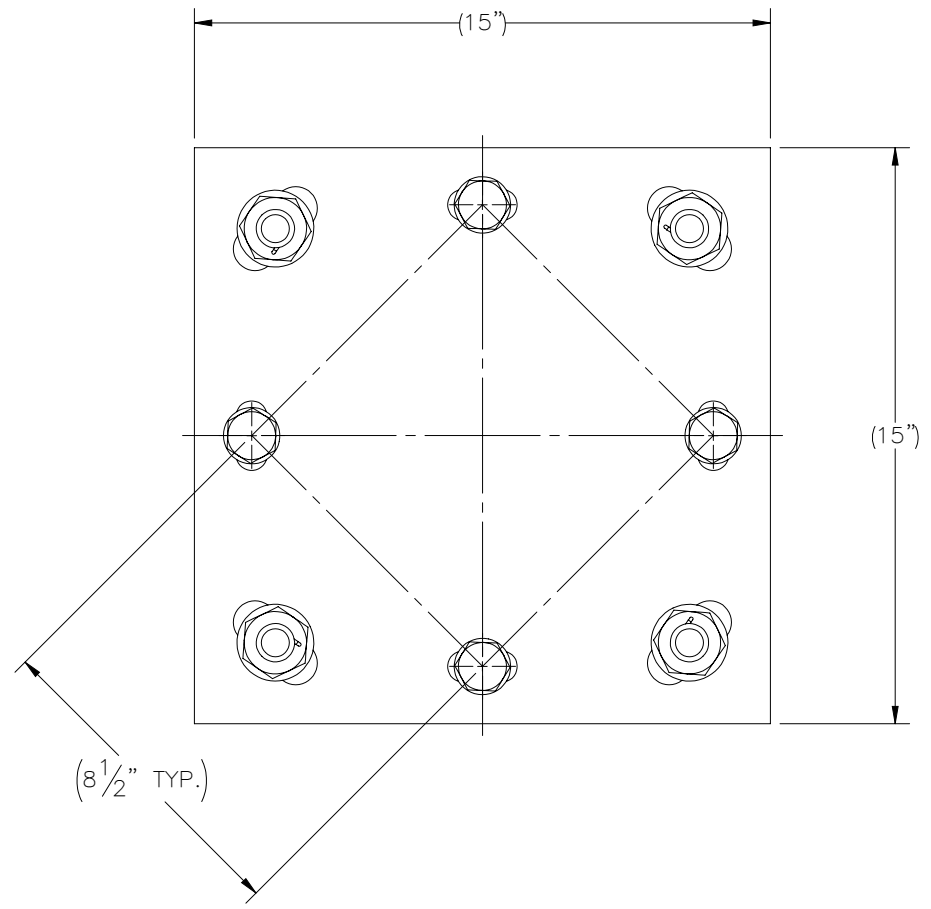

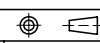


THE INFORMATION CONTAINED IN THIS DRAWING IS THE SOLE PROPERTY OF ELECTRO MECHANICAL INDUSTRIES, INC. ANY REPRODUCTION IN PART OR WHOLE WITHOUT THE WRITTEN PERMISSION OF ELECTRO MECHANICAL IND., IS PROHIBITED.



ITEM NO.	QTY REQD	PART NUMBER	DESCRIPTION	LENGTH	WEIGHT
1	1	P-006-542	BASEPLATE, MID	15"	59.25
2	1	1000-0020-0077	QUAD MOUNT LEVELING HARDWARE KIT		15.17
3	4	002-0BG-0022	BOLT, HH, .750-10 X 3.00, GALV, A325, PT X 1.375	3"	0.5548
4	8	002-0FW-G003	WASHER, FLAT, .750, GALV, F436		0.05
5	4	002-0LW-G003	WASHER, SPLIT LOCK, .750, GALV		0.04
6	4	002-0NG-0002	NUT, HEX, .750-10, GALV, GR 2H		0.189

SURFACE FINISH <input checked="" type="checkbox"/> UNLESS OTHERWISE SPECIFIED		UNLESS OTHERWISE SPECIFIED DIMENSIONS ARE IN INCHES		APPROVALS	DATE	 ELECTRO MECHANICAL INDUSTRIES, INC. 11230 NEESESHAW DRIVE HOUSTON, TEXAS 77065 1-800-453-0050
MATERIAL	SEE PARTS LIST	TOLERANCES		DRAWN	2/10/2023	
THIRD ANGLE PROJECTION		.0	± .06	CHECKER	2/15/2023	TITLE:
		.00	± .015	ENGINEER	2/15/2023	ADAPTER KIT, 10" HELICAL, 8.5" SQUARE, .75" HDW
		.000	± .005	PRODUCTION	2/15/2023	SIZE
NEXT ASSY	USED ON	FRACTIONS	± 1/16	J. KERNER		DRAWING NO.
		ANGLES	± .25°			1000-0030-0139
		HOLES:				REV
		DRILLED OR PUNCHED	+1/32			0
		BURNED	±1/32			SCALE: 1:5
APPLICATIONS						WEIGHT: 77.96 lbs.
						SHEET 1 OF 1