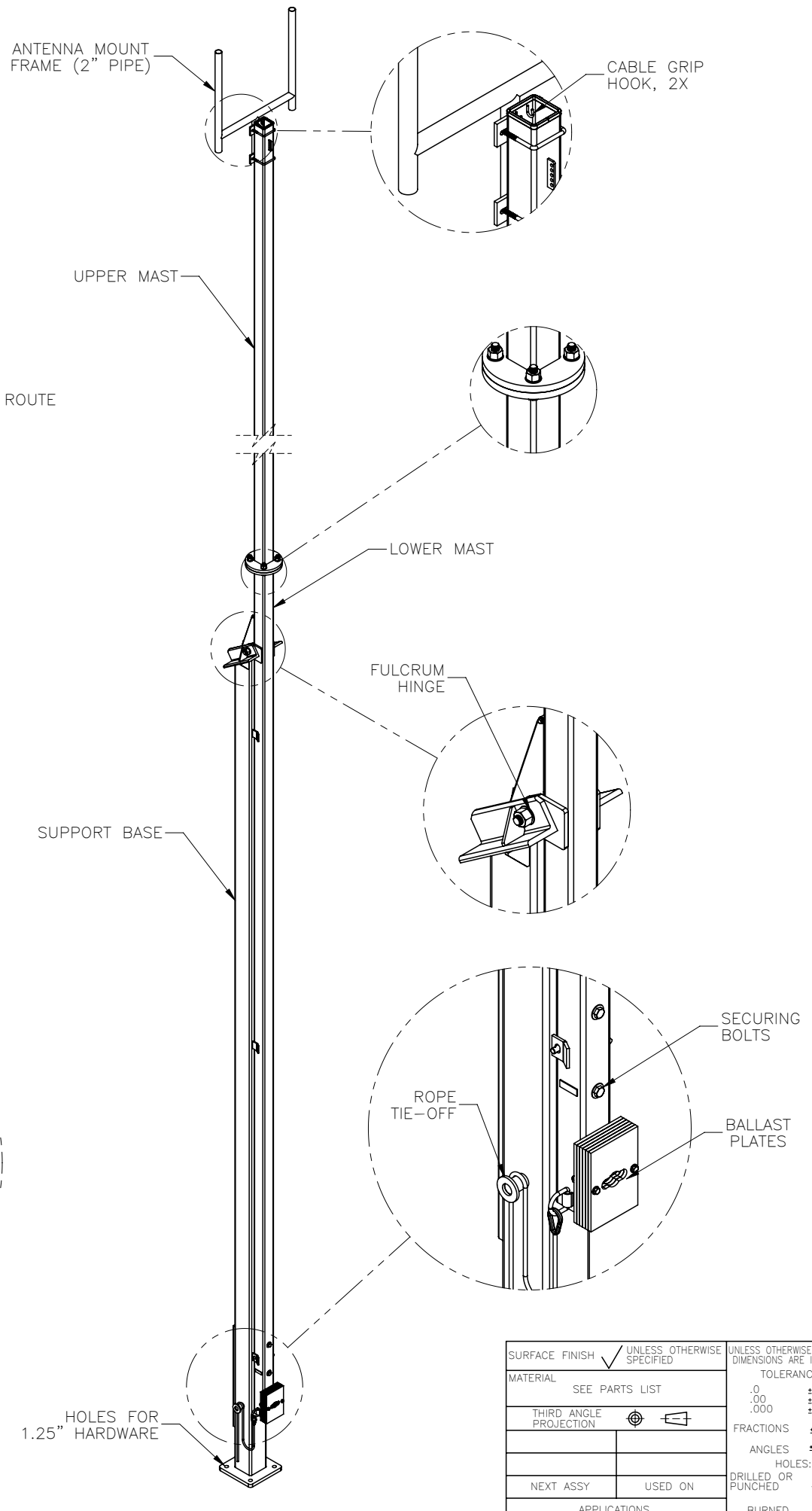
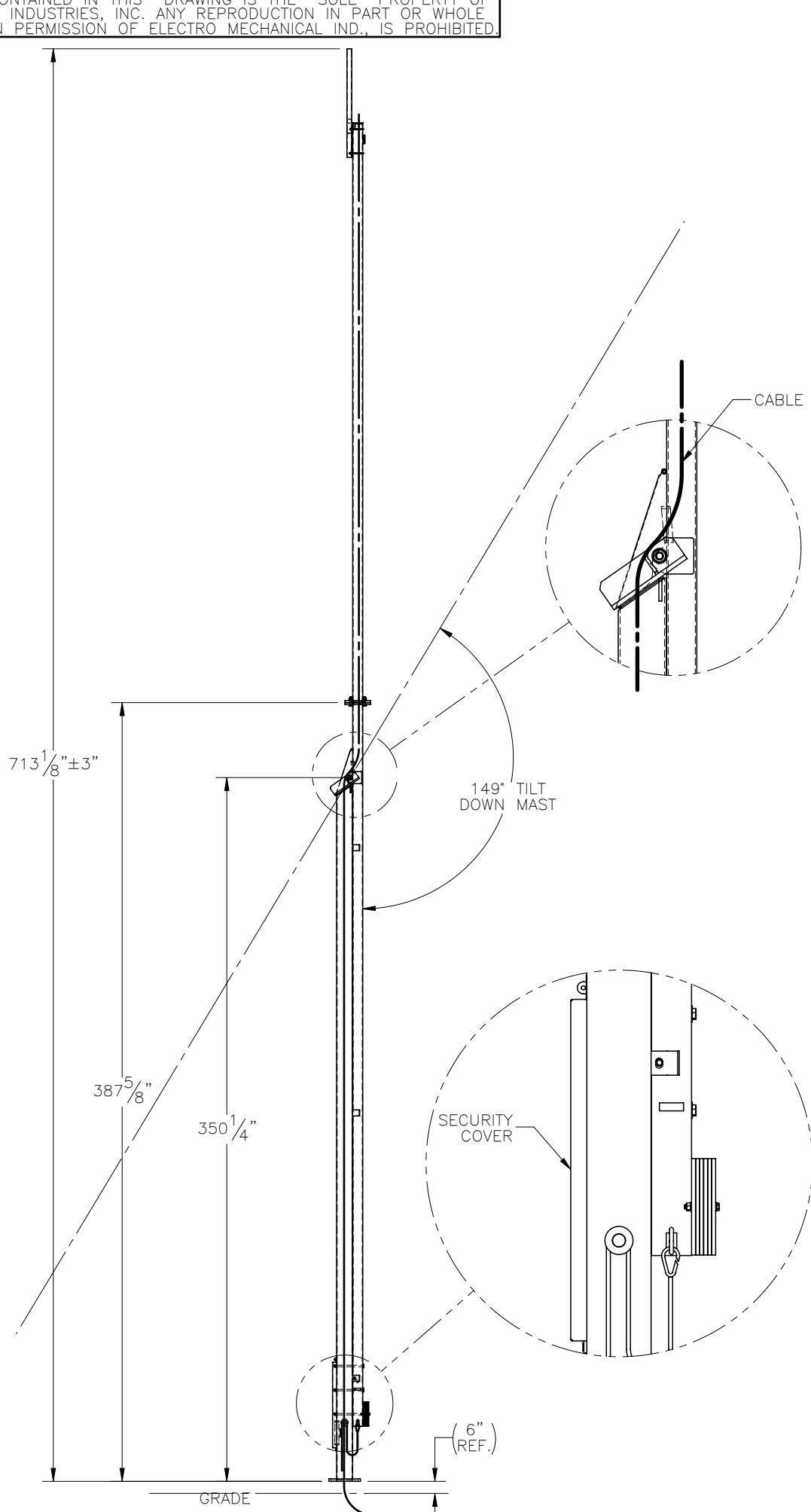

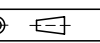


THE INFORMATION CONTAINED IN THIS DRAWING IS THE SOLE PROPERTY OF ELECTRO MECHANICAL INDUSTRIES, INC. ANY REPRODUCTION IN PART OR WHOLE WITHOUT THE WRITTEN PERMISSION OF ELECTRO MECHANICAL IND., IS PROHIBITED.



MEETS:
EIA/TIA STANDARD 222 REV G
100 MPH WINDSPEED
GALVANIZED STEEL PER ASTM A123

SURFACE FINISH <input checked="" type="checkbox"/> UNLESS OTHERWISE SPECIFIED		UNLESS OTHERWISE SPECIFIED DIMENSIONS ARE IN INCHES		APPROVALS	DATE	 ELECTRO MECHANICAL INDUSTRIES, INC. 11230 NEESHAW DRIVE HOUSTON, TEXAS 77065 1-800-453-0050
MATERIAL	SEE PARTS LIST	TOLERANCES		DRAWN	2018-11-27	
THIRD ANGLE PROJECTION		.0	± .06	CHECKED		TITLE:
		.00	± .01	ENGINEER/DESIGNER		EQUILIBRIUM 60' TILT UP TOWER
		.000	± .005	PRODUCTION		SIZE DRAWING NO.
NEXT ASSY	USED ON	FRACTIONS	± 1/16			B 1002-0030-0007
		ANGLES	± .25°			SCALE: 1:72 WEIGHT: 2138.6 lbs. SHEET 1 OF 1
APPLICATIONS		HOLES:				
		DRILLED OR PUNCHED	+1/32			
		BURNED	±1/32			