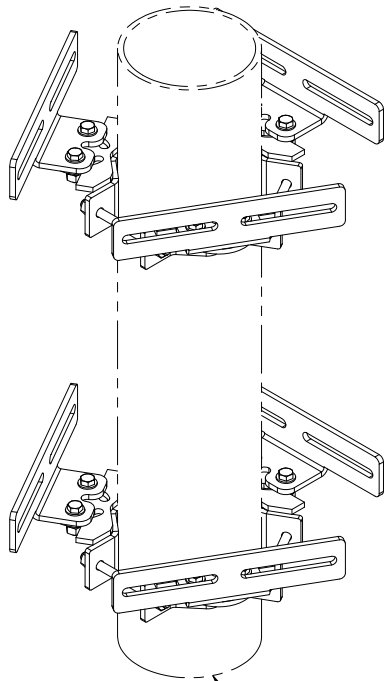
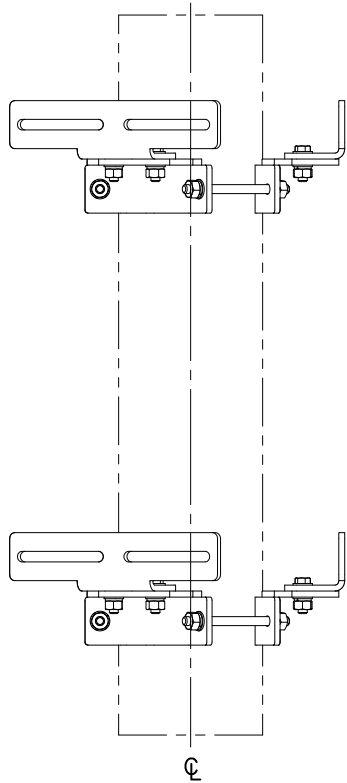
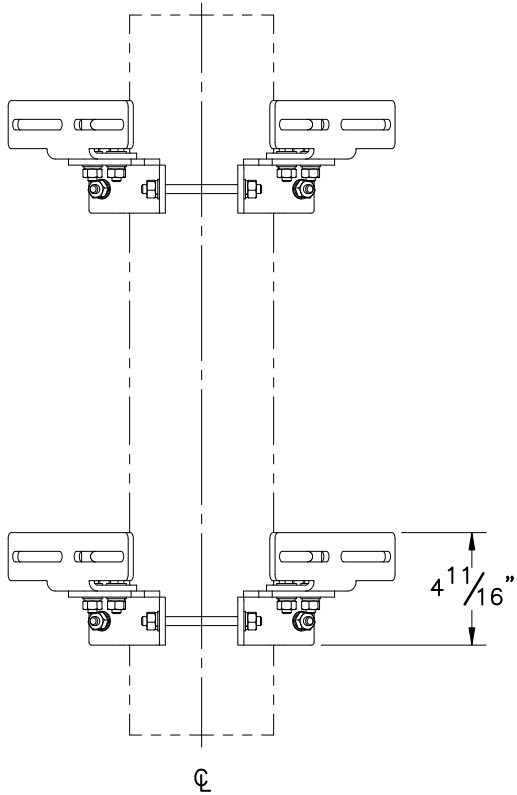
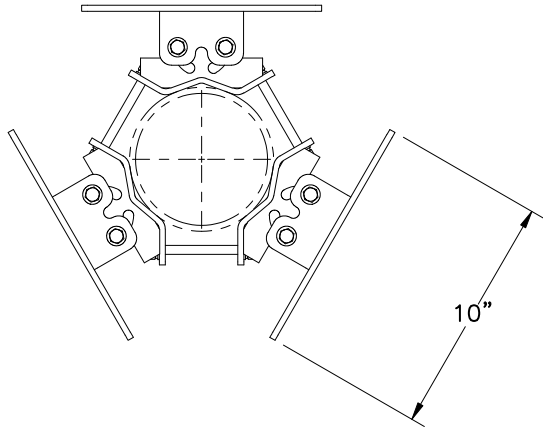

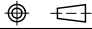


THE INFORMATION CONTAINED IN THIS DRAWING IS THE SOLE PROPERTY OF ELECTRO MECHANICAL INDUSTRIES, INC. ANY REPRODUCTION IN PART OR WHOLE WITHOUT THE WRITTEN PERMISSION OF ELECTRO MECHANICAL IND., IS PROHIBITED.



FITS 6"-11" PIPE DIA  
(NOT INCLUDED)

# SALES DRAWING

SURFACE FINISH <input checked="" type="checkbox"/> UNLESS OTHERWISE SPECIFIED		UNLESS OTHERWISE SPECIFIED DIMENSIONS ARE IN INCHES		APPROVALS	DATE	 <div>ELECTRO MECHANICAL INDUSTRIES, INC. 11230 NEESHAW DRIVE HOUSTON, TEXAS 77065 1-800-453-0050</div>	
MATERIAL SEE PARTS LIST		TOLERANCES .0 ±.06 .00 ±.015 .000 ±.005		DRAWN			
THIRD ANGLE PROJECTION 		FRACTIONS ± 1/16 ANGLES ± .25°		CHECKER		TITLE: TRILATERAL MOUNT W/ EXTENSION BRACKET, 3" TO 6" DIA. POLE	
		HOLES: DRILLED OR PUNCHED ± 1/32		ENGINEER			
NEXT ASSY		USED ON		PRODUCTION		SIZE B	DRAWING NO. 1012-0000-0170
APPLICATIONS		BURNED ± 1/32				SCALE: 1:8	WEIGHT: 22.10 lbs.
						SHEET 1 OF 1	

REV 0