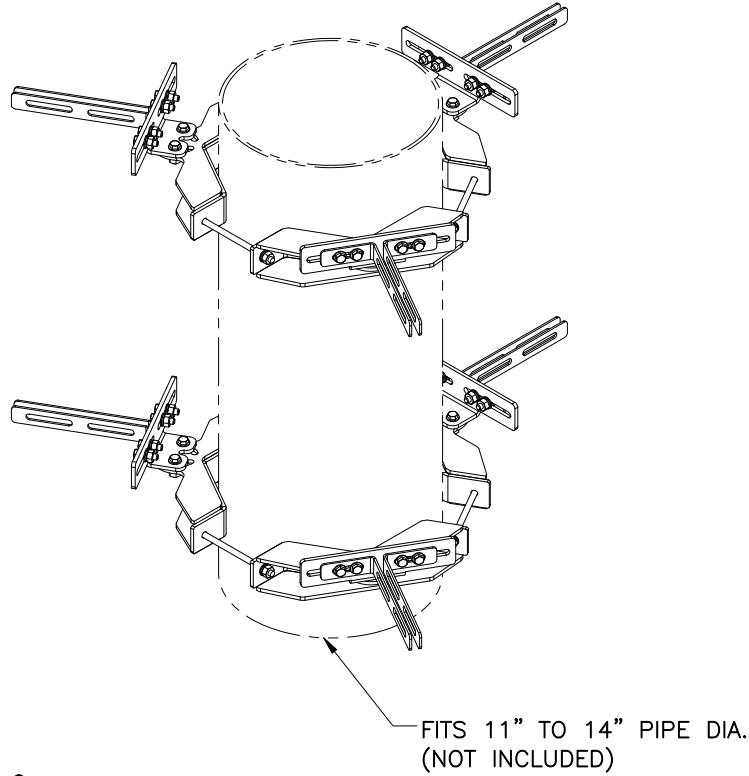
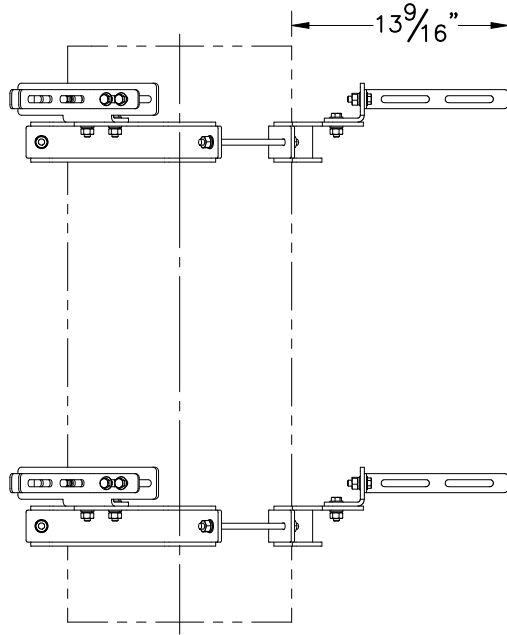
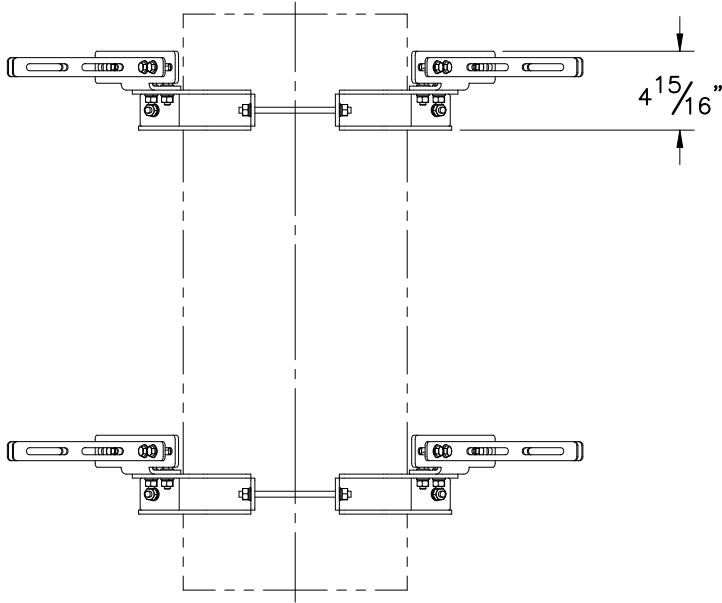
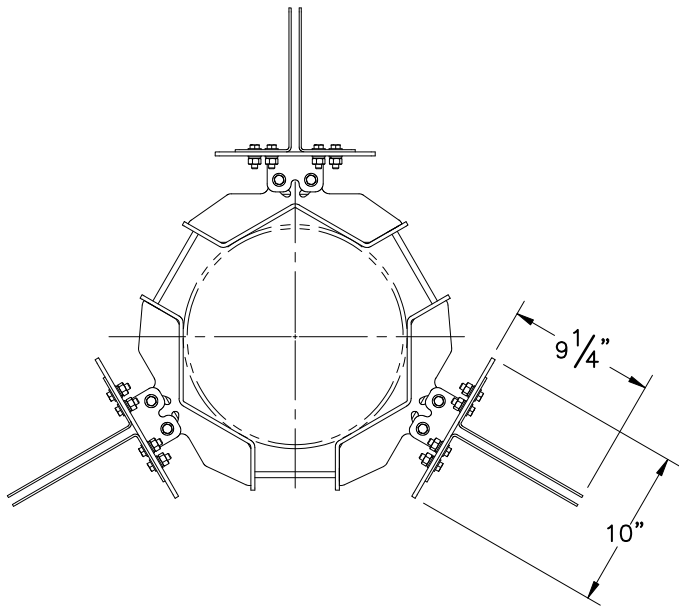

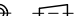


THE INFORMATION CONTAINED IN THIS DRAWING IS THE SOLE PROPERTY OF ELECTRO MECHANICAL INDUSTRIES, INC. ANY REPRODUCTION IN PART OR WHOLE WITHOUT THE WRITTEN PERMISSION OF ELECTRO MECHANICAL IND., IS PROHIBITED.



SALES DRAWING

SURFACE FINISH <input checked="" type="checkbox"/> UNLESS OTHERWISE SPECIFIED		UNLESS OTHERWISE SPECIFIED DIMENSIONS ARE IN INCHES		APPROVALS		DATE		 <div>ELECTRO MECHANICAL INDUSTRIES, INC. 11230 NEESHAW DRIVE HOUSTON, TEXAS 77065 1-800-453-0050</div>			
MATERIAL <div>SEE PARTS LIST</div>		TOLERANCES .0 ± .06 .00 ± .015 .000 ± .005		DRAWN F. BAYEH		4/21/2025		TITLE: <div>TRILATERAL MOUNT W/ EXTENSION BRACKET, 11 TO 14 DIA. POLE</div>			
THIRD ANGLE PROJECTION 		FRACTIONS ± 1/16 ANGLES ± .25°		CHECKER							
		HOLES: DRILLED OR PUNCHED ± 1/32		ENGINEER				SIZE B			
NEXT ASSY		USED ON		PRODUCTION				DRAWING NO. 1012-0000-0175		REV 0	
APPLICATIONS		BURNED ± 1/32						SCALE: 1:12		WEIGHT: 56.59 lbs.	
										SHEET 1 OF 1	