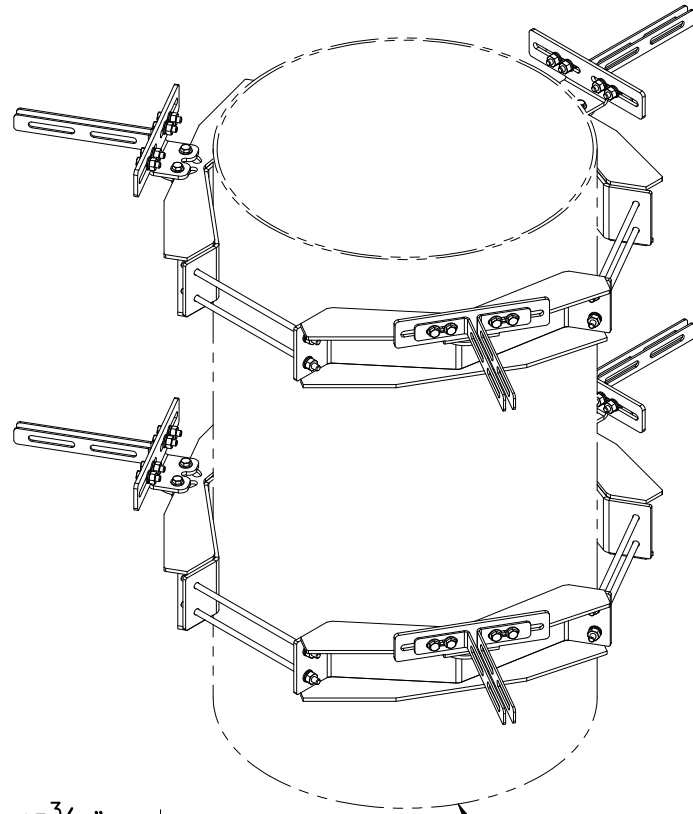
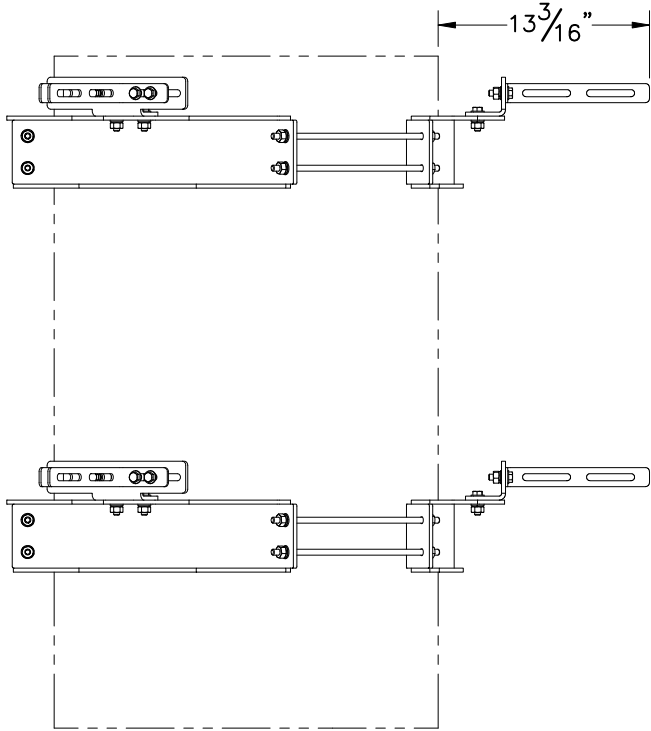
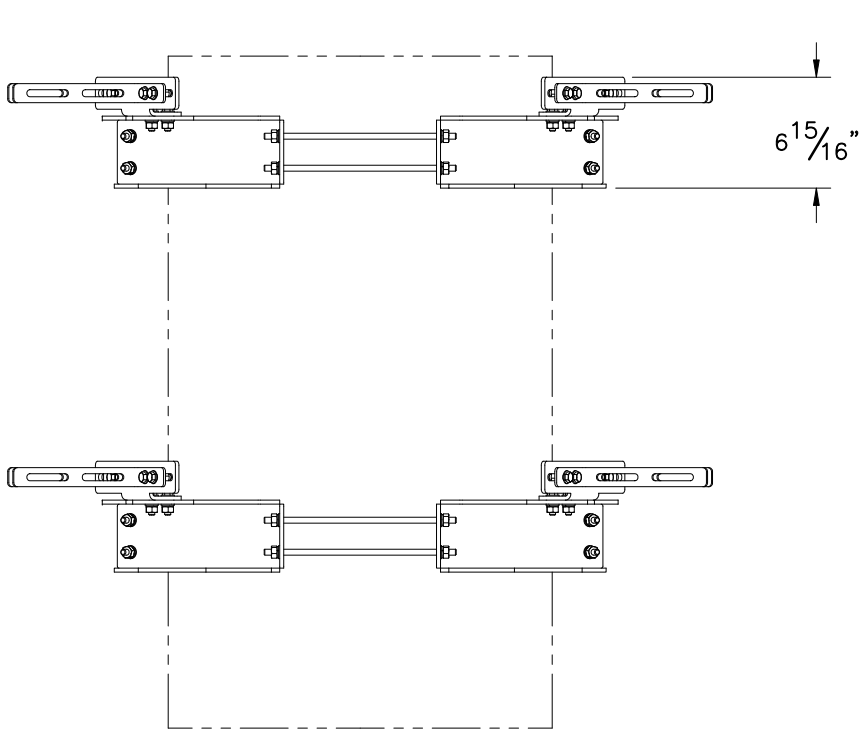
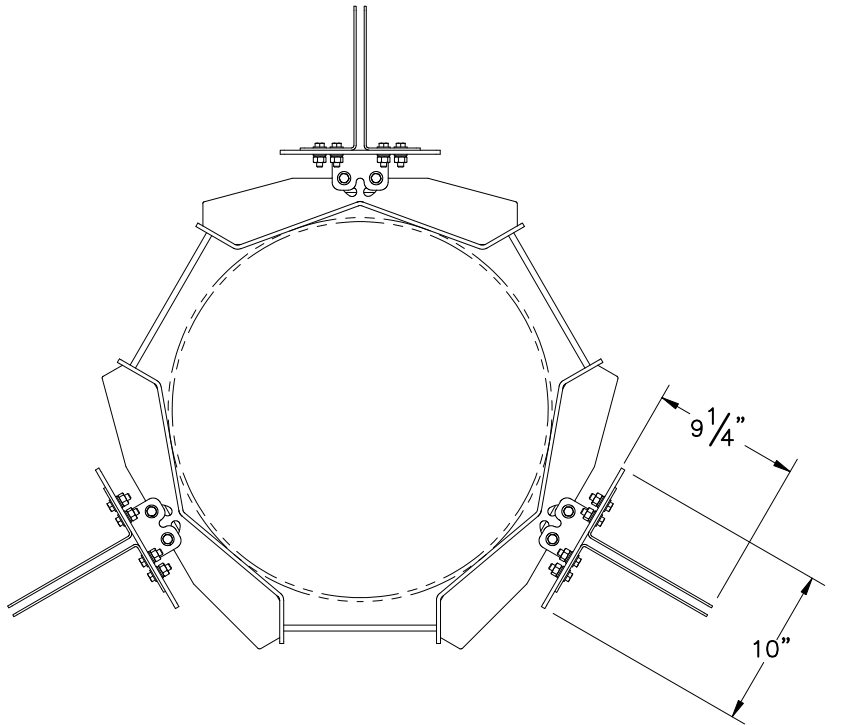

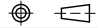


THE INFORMATION CONTAINED IN THIS DRAWING IS THE SOLE PROPERTY OF ELECTRO MECHANICAL INDUSTRIES, INC. ANY REPRODUCTION IN PART OR WHOLE WITHOUT THE WRITTEN PERMISSION OF ELECTRO MECHANICAL IND., IS PROHIBITED.



FITS 14" TO 24" PIPE DIA.
(NOT INCLUDED)

SALES DRAWING

SURFACE FINISH <input checked="" type="checkbox"/> UNLESS OTHERWISE SPECIFIED		UNLESS OTHERWISE SPECIFIED DIMENSIONS ARE IN INCHES		APPROVALS		DATE		 <div>ELECTRO MECHANICAL INDUSTRIES, INC. 11230 NEESHAW DRIVE HOUSTON, TEXAS 77065 1-800-453-0050</div>				
MATERIAL SEE PARTS LIST		TOLERANCES .0 ± .06 .00 ± .015 .000 ± .005		DRAWN F. BAYEH		4/21/2025		TITLE: TRILATERAL MOUNT W/ EXTENSION BRACKET, 14 TO 24 DIA. POLE				
THIRD ANGLE PROJECTION 		FRACTIONS ± 1/16 ANGLES ± .25°		CHECKER								
		HOLES: DRILLED OR PUNCHED +1/32		ENGINEER				SIZE B		DRAWING NO. 1012-0000-0177		REV 0
NEXT ASSY		USED ON		PRODUCTION				SCALE: 1:12		WEIGHT: 100.66 lbs.		SHEET 1 OF 1
APPLICATIONS		BURNED ± 1/32										