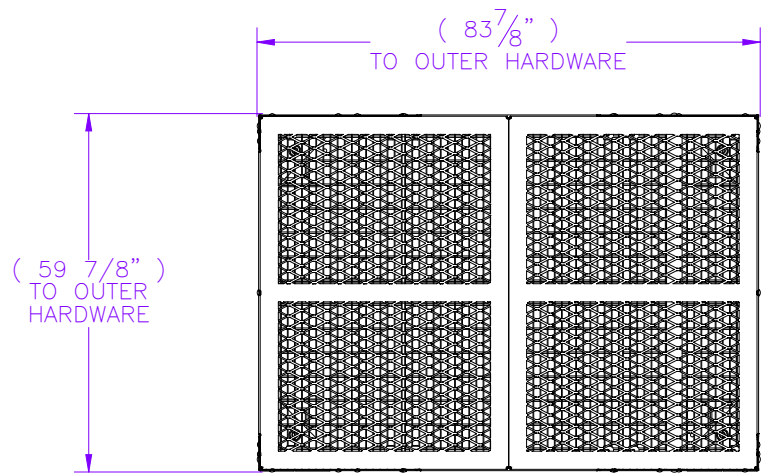
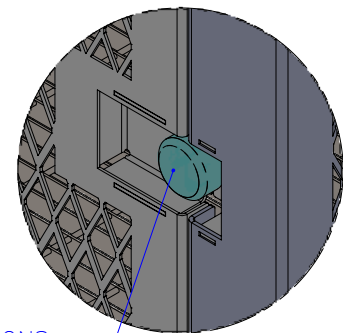


THE INFORMATION CONTAINED IN THIS DRAWING IS THE SOLE PROPERTY OF ELECTRO MECHANICAL INDUSTRIES, INC. ANY REPRODUCTION IN PART OR WHOLE WITHOUT THE WRITTEN PERMISSION OF ELECTRO MECHANICAL IND., IS PROHIBITED.

REVISIONS					
REV.	DCN #	DESCRIPTION	DATE	BY	APPROVED
1	01407	UPDATING LOWER-LEVEL PARTS, CHANGED P-007-767 TO W-003-240	08/14/2025	RSL	CS



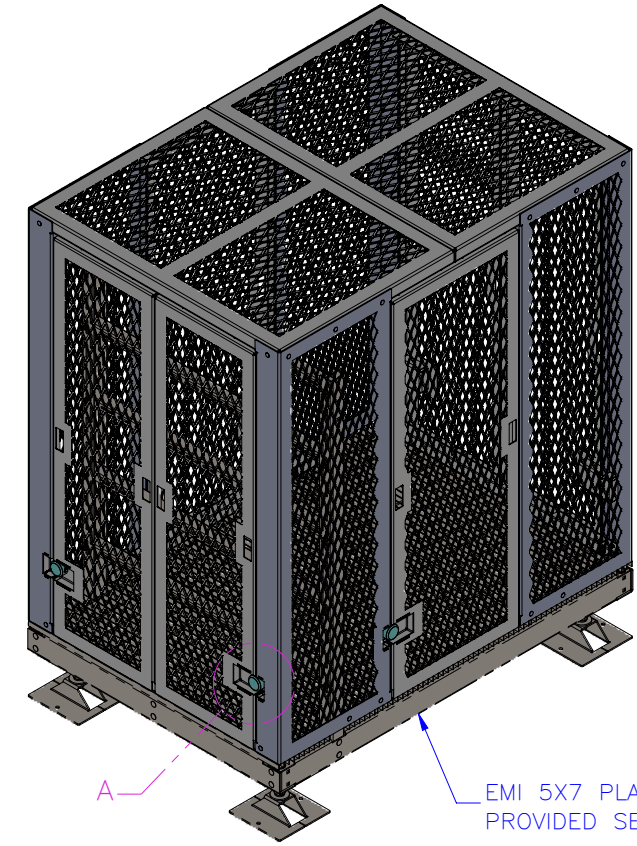
TOP VIEW



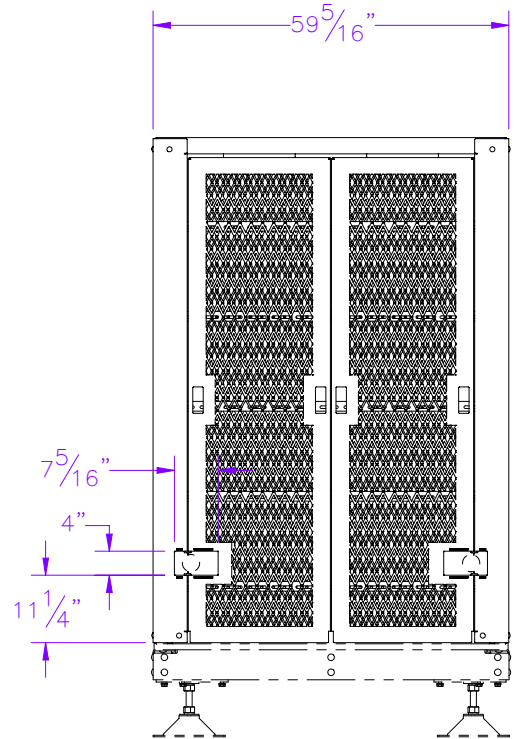
DETAIL A

PUCKLOCK AT 6 LOCATIONS RECESSED AND FLUSH WITH OUTER PANELS POCKET ALLOWS CLEARANCE FOR KEY AND INSERT.

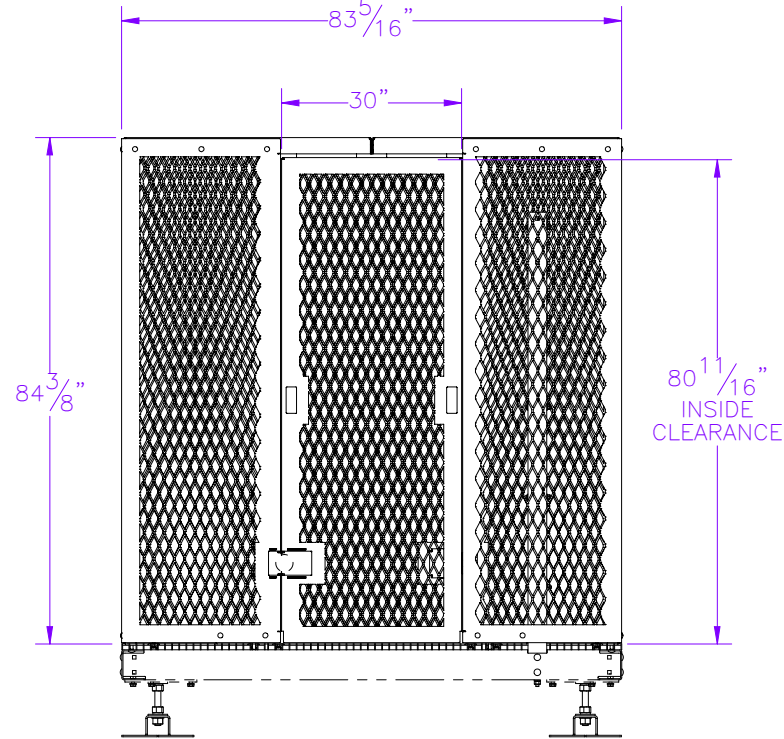
*ALL LOCKS TO BE KEYED ALIKE. TO BE PROVIDED BY CUSTOMER & SIMILAR TO MASTERLOCK 6271



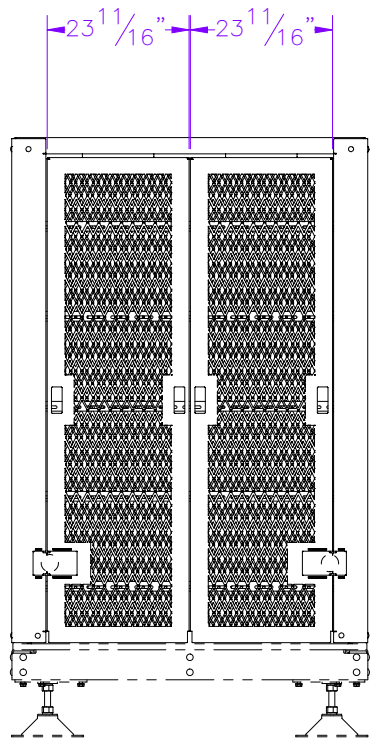
EMI 5X7 PLATFORM PROVIDED SEPARATELY



LEFT VIEW




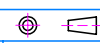
FRONT VIEW

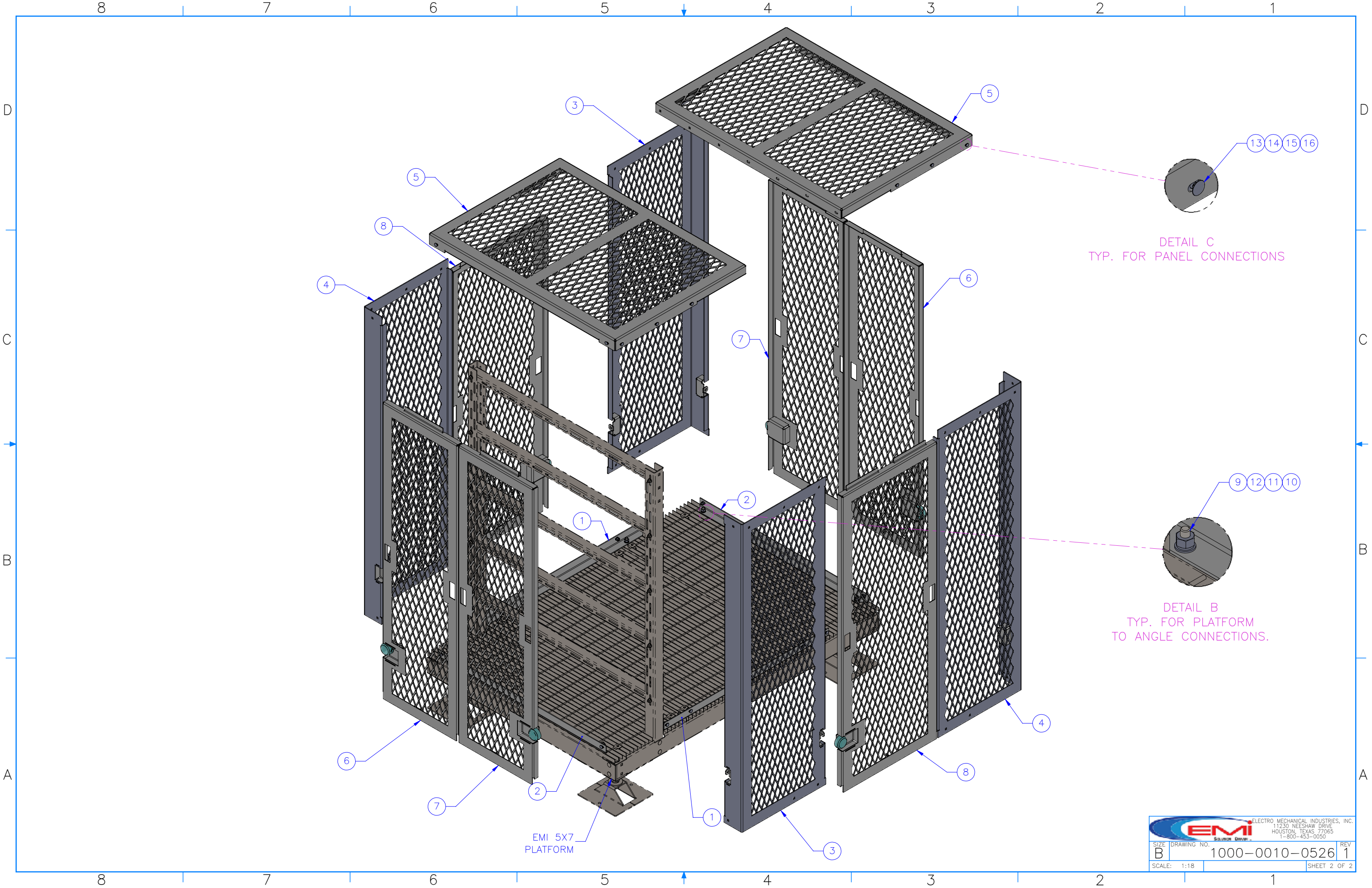


RIGHT VIEW


ITEM NO.	QTY REQD	PART NUMBER	DESCRIPTION	LENGTH	WEIGHT
1	2	P-007-662	PLATFORM ANGLE		10.57
2	2	P-007-663	PLATFORM ANGLE		10.85
3	2	W-002-951	CORNER WELDMENT		93.94
4	2	W-002-952	CORNER WELDMENT		88.81
5	2	W-003-240	ROOF SECTION W/ TABS, SECURITY FRAME		99.45
6	2	W-002-998	SMALL DOOR, LEFT WELDMENT		49.16
7	2	W-002-999	SMALL DOOR, RIGHT WELDMENT		49.20
8	2	W-002-950	LARGE DOOR WELDMENT		54.65
9	8	002-CBG-0020	BOLT, CB, .500-13 X 2.50, GALV, A307	2 1/2"	0.19
10	8	002-OFW-G037	WASHER, FLAT, .500, GALV, SAE		0.02
11	8	002-OLW-G002	WASHER, SPLIT LOCK, .500, GALV		0.014
12	8	002-ONG-0010	NUT, HEX, .500-13, GALV, GR 2H		0.06
13	35	002-CBG-0005	BOLT, CB, .375-16 X 1.25, GALV, A307	1 1/4"	0.01
14	35	002-OFW-G036	WASHER, FLAT, .375, GALV, SAE		0.01
15	35	002-OLW-G005	WASHER, SPLIT LOCK, .375, GALV		0.01
16	35	002-ONG-0003	NUT, HEX, .375-16, GALV, GR 2H		0.030

NOTES:
 1. ALL LOCKS TO BE KEYED ALIKE
 2. CHECK & ADJUST FOR SQUARENESS OF ASSEMBLY BEFORE FINISH TIGHTENING OF ALL HARDWARE

SURFACE FINISH <input checked="" type="checkbox"/> UNLESS OTHERWISE SPECIFIED		UNLESS OTHERWISE SPECIFIED DIMENSIONS ARE IN INCHES		APPROVALS	DATE	 ELECTRO MECHANICAL INDUSTRIES, INC. 11250 NEESESHAW DRIVE HOUSTON, TEXAS 77065 1-800-453-0050
MATERIAL SEE PARTS LIST		TOLERANCES .0 ±.06 .00 ±.015 .000 ±.005 FRACTIONS ± 1/16 ANGLES: FORMED ± 1° ALL OTHERS ± .25° HOLES: DRILLED OR PUNCHED +1/32 BURNED ±1/32		DRAWN A. Cruz	4/29/2025	
THIRD ANGLE PROJECTION 		NEXT ASSY		CHECKER C. SANCHEZ	5/1/2025	SIZE B
APPLICATIONS		USED ON		ENGINEER/DESIGNER C. SANCHEZ	5/1/2025	DRAWING NO. 1000-0010-0526
				SCALE: 1:32		REV 1
				WEIGHT: 917.33 lbs.		SHEET 1 OF 2



EMI 5X7
PLATFORM

		ELECTRO MECHANICAL INDUSTRIES, INC. 11230 NEESHAW DRIVE HOUSTON, TEXAS 77065 1-800-453-0050	
SIZE	DRAWING NO.	REV	
B	1000-0010-0526	1	
SCALE:	1:18	SHEET 2 OF 2	