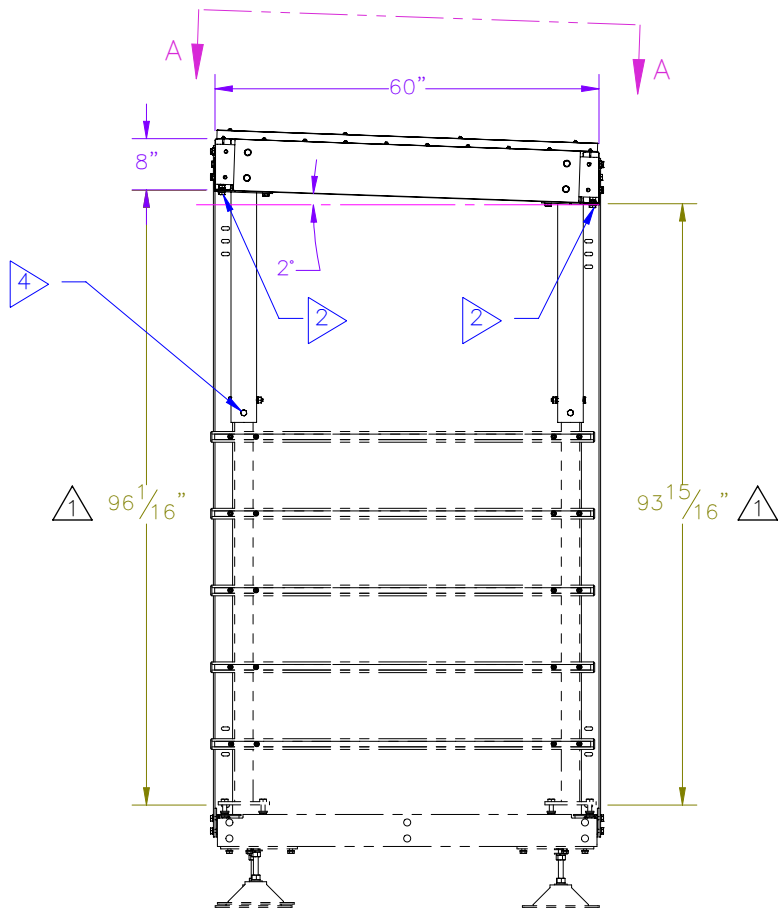
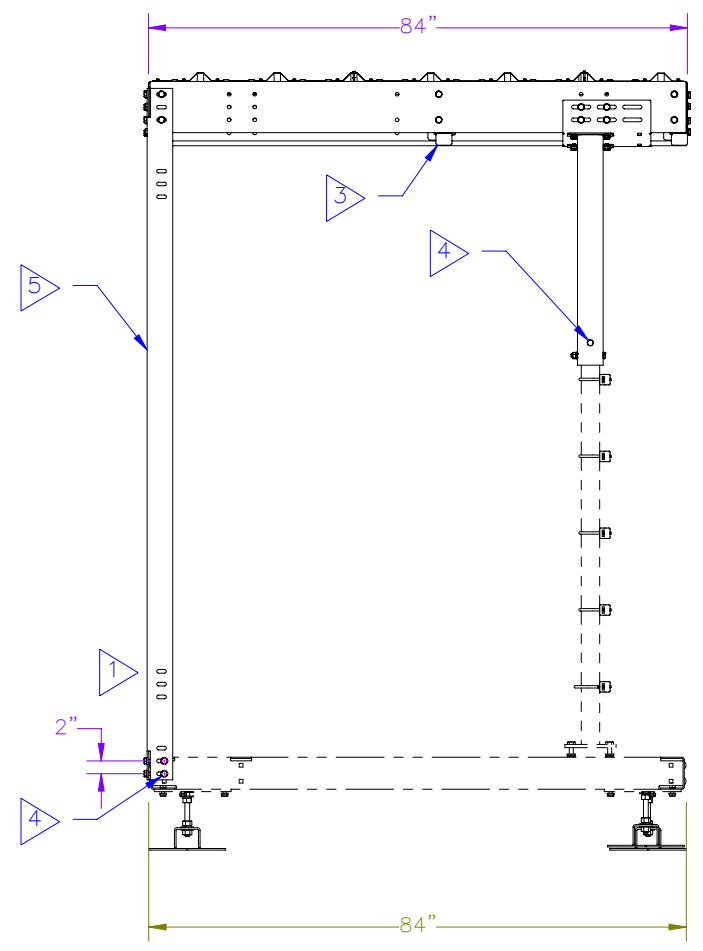
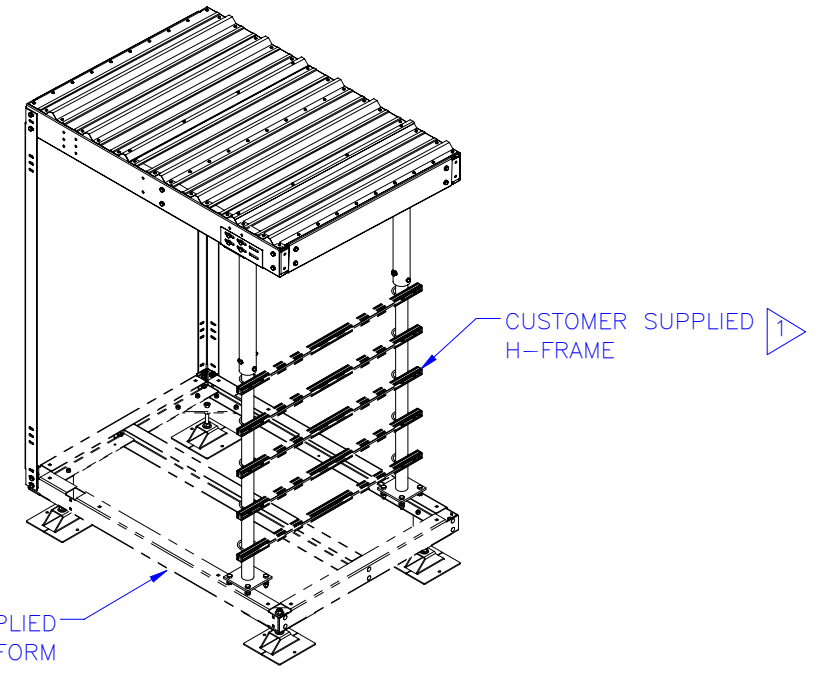
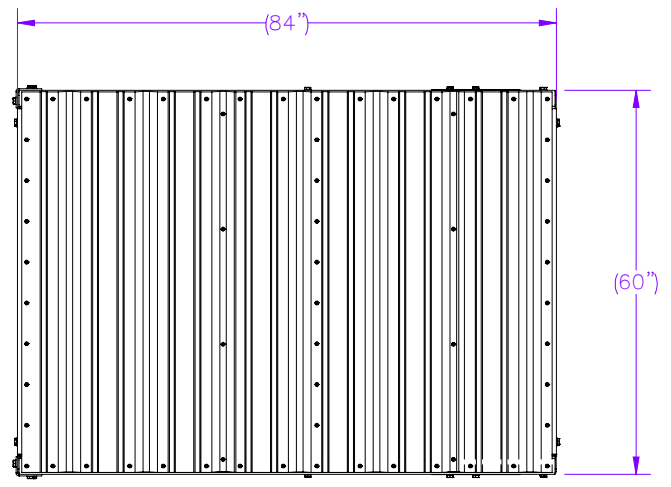



THE INFORMATION CONTAINED IN THIS DRAWING IS THE SOLE PROPERTY OF ELECTRO MECHANICAL INDUSTRIES, INC. ANY REPRODUCTION IN PART OR WHOLE WITHOUT THE WRITTEN PERMISSION OF ELECTRO MECHANICAL IND., IS PROHIBITED.

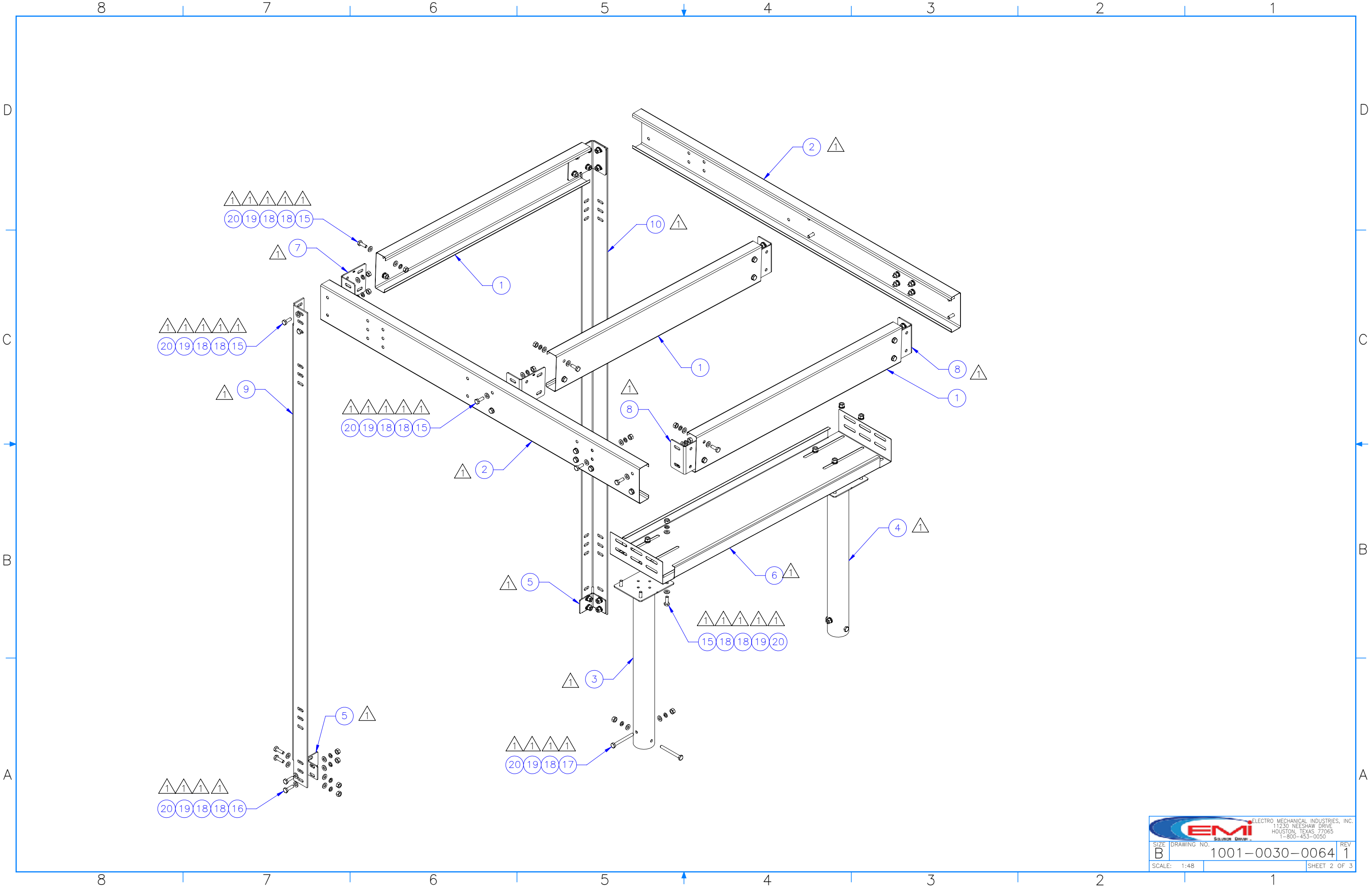
REVISIONS					
REV.	DCN #	DESCRIPTION	DATE	BY	APPROVED
1	01244	ADDED W-002-608, P-005-748, P-005-769, P-005-745, P-005-746, P-005-775, P-005-776, W-002-606 QTY 1 WAS 2, REMOVED P-002-525 AND P-005-727, 002-0SG-0007 QTY 62 WAS 64, 002-0BG-0010 QTY 44 WAS 32, 002-0BG-0236 QTY 4 WAS 002-0BG-0320 QTY 2, 002-0FW-G002 QTY 108 WAS 82, 002-0LW-G002 QTY 56 WAS 42, 002-0NG-0010 QTY 56 WAS 42, 93-15/16 WAS 96, 96-1/16 WAS 98-15/16, UPDATED WITH LOWER LEVEL CHANGES.	05/26/2023	JTR	JPB

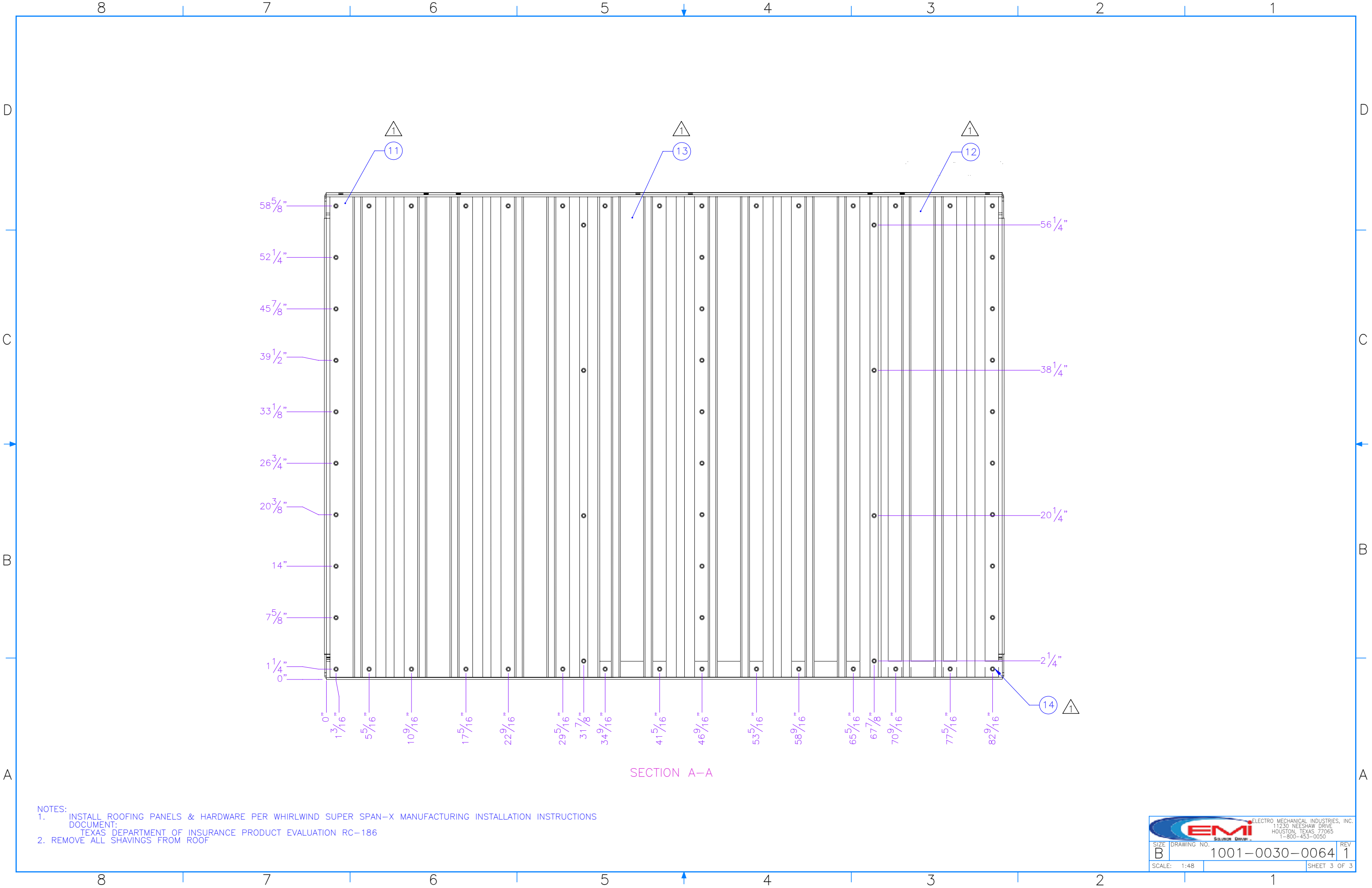


ITEM NO.	QTY REQD	PART NUMBER	DESCRIPTION	LENGTH	WEIGHT
1	3	P-005-716	C PURLIN SHORT ROOF RUNNER	54"	13.08
2	2	P-005-717	C PURLIN LONG ROOF RUNNER	83 3/4"	20.2347
3	1	W-002-606	LONG LEG WELDMENT		30.55
4	1	W-002-608	SHORT LEG WELDMENT		29.20
5	2	P-005-748	INSIDE FORMED CLIP	3 1/2"	0.93
6	1	P-005-769	FORMED CHANNEL, H-FRAME SUPPORT	60 1/8"	26.23
7	2	P-005-745	ROOF CLIP, RIGHT		3.08
8	4	P-005-746	ROOF CLIP, LEFT	2.00'	3.08
9	1	P-005-728	ANGLE SUPPORT, LONG SIDE	4"	49.19
10	1	P-005-775	ANGLE SUPPORT, SHORT SIDE	106 1/16"	48.25
11	1	P-005-718	ROOF PANEL, 29 7/16" X 83 1/4", 24 GA. GALVALUME PLUS SSX	59 1/2"	15.2
12	1	P-005-719	ROOF PANEL, 16 5/16" X 59 1/2", 24 GA. GALVALUME PLUS SSX	59.5	7.429
13	1	P-005-776	ROOF PANEL, 36" X 59 1/2", 24 GA. GALVALUME PLUS SSX	59.5	17.684
14	62	002-0SG-0007	#12 X 1 1/4" LG., SELF DRILLING SCREW W. WASHER, GALV.		0.02
15	44	002-0BG-0010	BOLT, HH, .500-13 X 1.50, GALV, A325, PT X 1.00	1 1/2"	0.14
16	8	002-0BG-0012	BOLT, HH, .500-13 X 1.75, GALV, A325, PT X 1.00	1 3/4"	0.1557
17	4	002-0BG-0236	BOLT, HH, .500-13 X 5.00, GALV, A325, PT X 1.00	5"	0.34
18	108	002-0FW-G002	WASHER, FLAT, .500, GALV, F436		0.03
19	56	002-0LW-G002	WASHER, SPLIT LOCK, .500, GALV		0.014
20	56	002-0NG-0010	NUT, HEX, .500-13, GALV, GR 2H		0.06

- NOTE:
- 1 SHOWN WITH 6' H-FRAME, USE ALTERNATE SET OF HOLES FOR 5' H-FRAME
 - 2 FIELD DRILL PURLIN FLANGE IF NECESSARY TO CONNECT ITEMS 3 AND 4.
 - 3 REVERSING CANOPY INCLINE REQUIRES ROTATING CENTER PURLIN.
 - 4 FIELD DRILL THRU EXISTING PIPE/CHANNEL FOR 1/2" HDW BOTH SIDES.
 - 5 ALIGN LONGER ANGLE LEG WITH LONGER PLATFORM SIDE.


SURFACE FINISH <input checked="" type="checkbox"/> UNLESS OTHERWISE SPECIFIED		UNLESS OTHERWISE SPECIFIED DIMENSIONS ARE IN INCHES		APPROVALS		DATE		 ELECTRO MECHANICAL INDUSTRIES, INC. 11230 NEESESHAW DRIVE HOUSTON, TEXAS 77065 1-800-453-0050	
MATERIAL GALVANIZED STEEL		TOLERANCES		DRAWN J. ROACH		4/24/2023			
THIRD ANGLE PROJECTION		FRACTIONS ± 1/16		CHECKER J. Breen		4/24/2023		TITLE: 5'X7' BOLT TOGETHER CANOPY	
NEXT ASSY USED ON		ANGLES ± .25°		ENGINEER J. Breen		4/24/2023			
APPLICATIONS		HOLES: DRILLED OR PUNCHED ± 1/32		PRODUCTION J. KERNER		4/24/2023		SIZE B DRAWING NO. 1001-0030-0064 REV 1	
		BURNED ± 1/32						SCALE: 1:30 WEIGHT: 341.15 lbs. SHEET 1 OF 1	





SECTION A-A

- NOTES:
 1. INSTALL ROOFING PANELS & HARDWARE PER WHIRLWIND SUPER SPAN-X MANUFACTURING INSTALLATION INSTRUCTIONS
 DOCUMENT:
 TEXAS DEPARTMENT OF INSURANCE PRODUCT EVALUATION RC-186
 2. REMOVE ALL SHAVINGS FROM ROOF

 ELECTRO MECHANICAL INDUSTRIES, INC. 11230 NEESHAW DRIVE HOUSTON, TEXAS 77065 1-800-453-0050		
SIZE	DRAWING NO.	REV
B	1001-0030-0064	1
SCALE: 1:48	SHEET 3 OF 3	