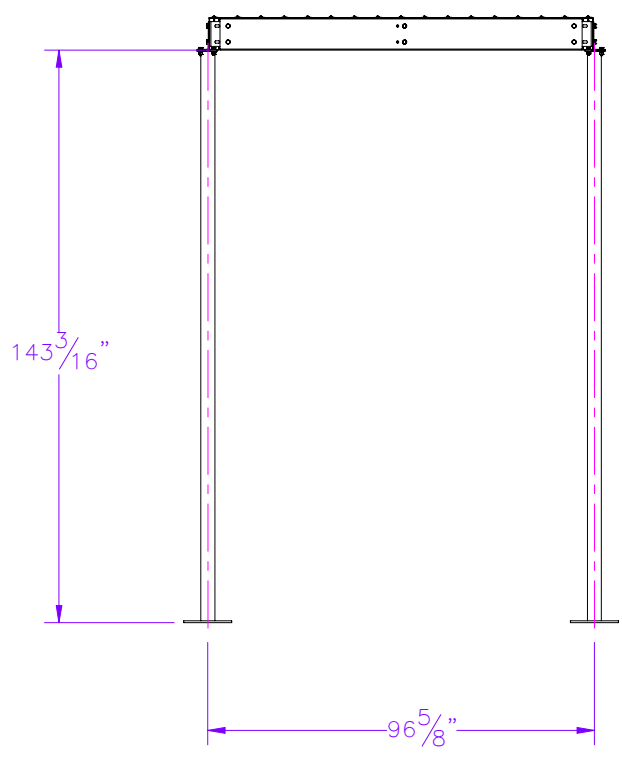
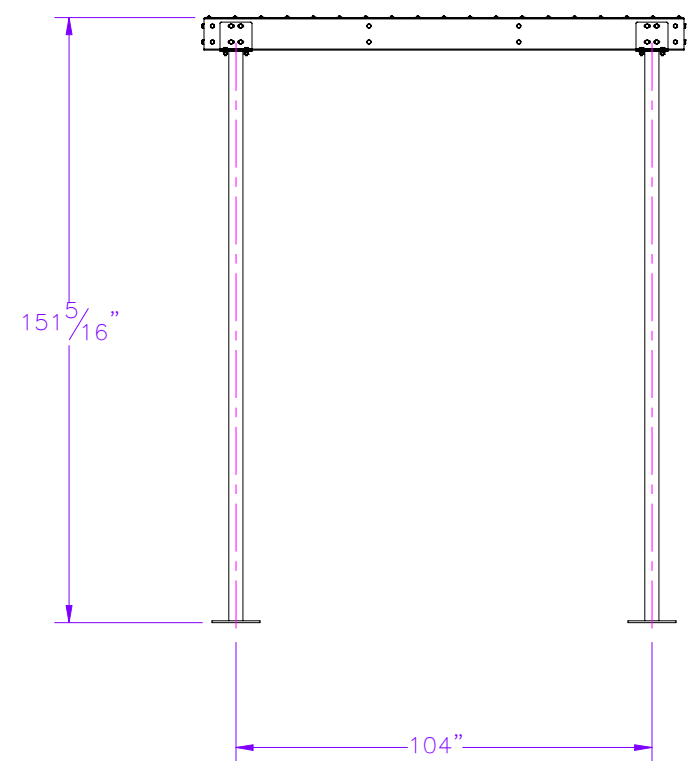
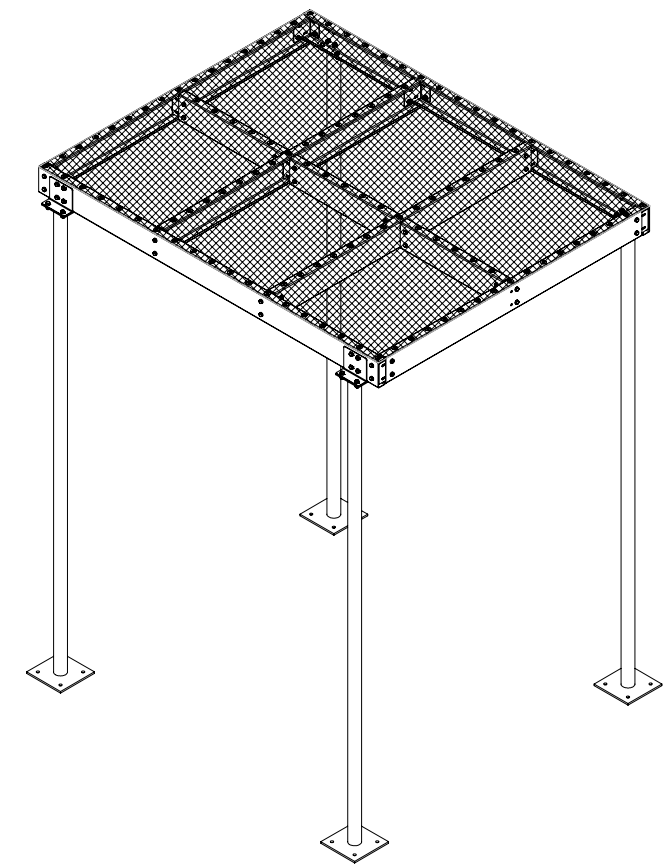
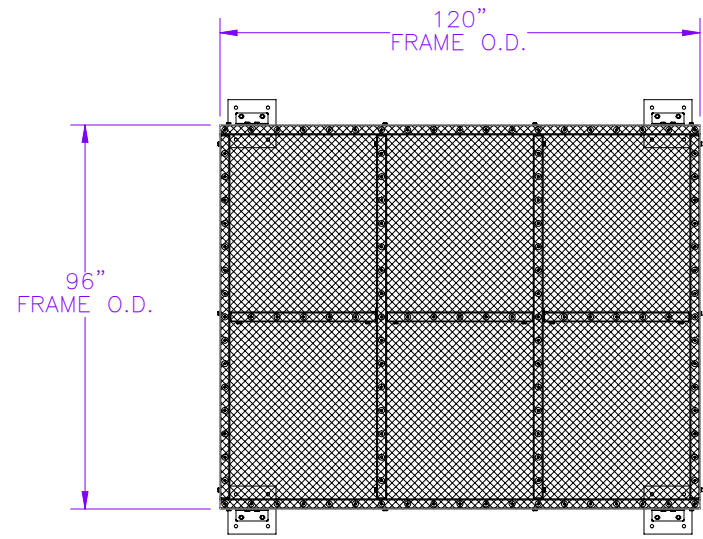


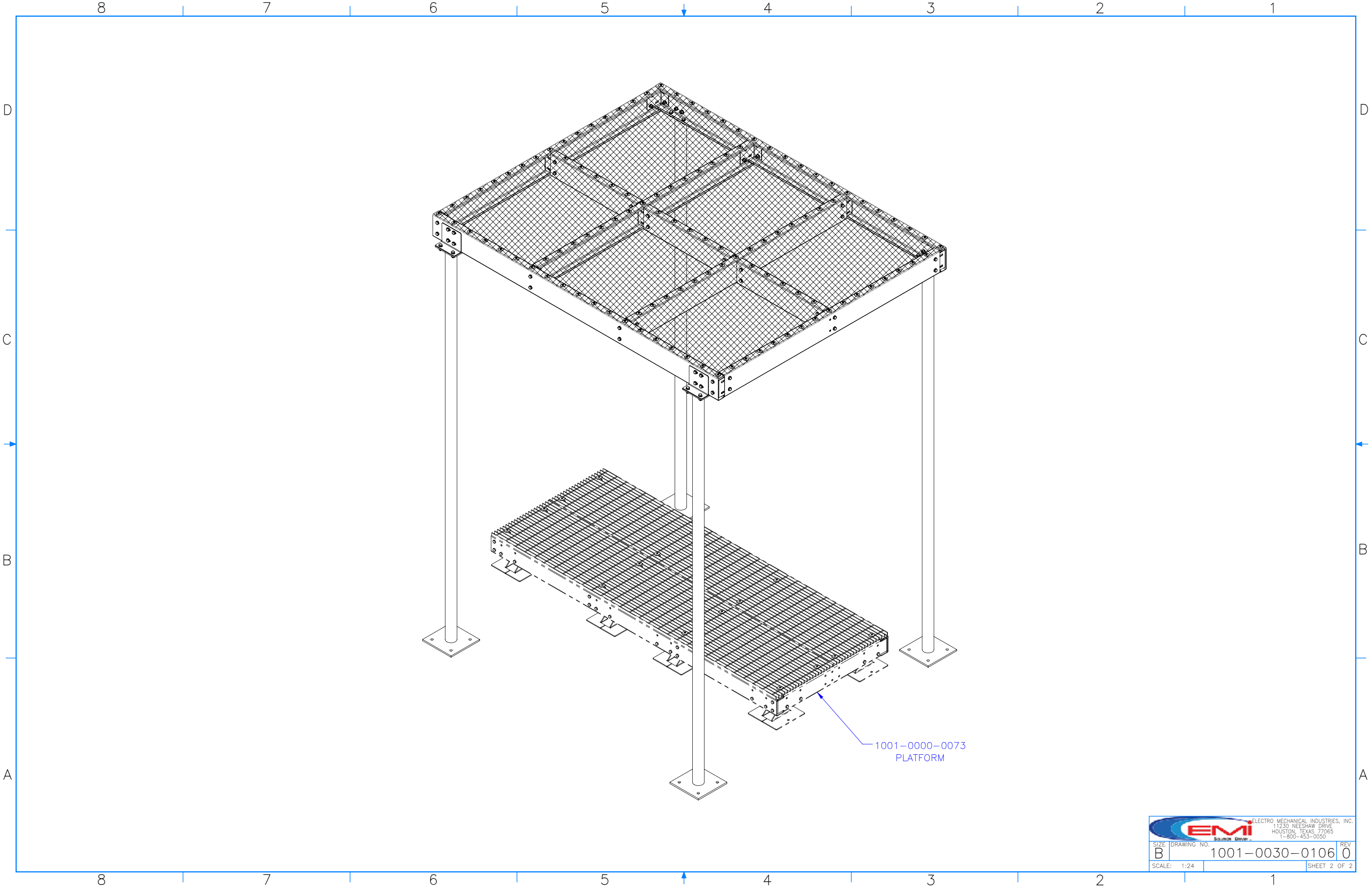


THE INFORMATION CONTAINED IN THIS DRAWING IS THE SOLE PROPERTY OF ELECTRO MECHANICAL INDUSTRIES, INC. ANY REPRODUCTION IN PART OR WHOLE WITHOUT THE WRITTEN PERMISSION OF ELECTRO MECHANICAL IND., IS PROHIBITED.




ITEM NO.	QTY.	PART NUMBER	DESCRIPTION	LENGTH	WEIGHT
1	4	W-003-186	SHORT TILT UP CANOPY POST WELDMENT		0.00
2	4	P-002-524	ROOF OUTSIDE CLIP		3.88
3	2	P-008-369	C PURLIN LONG ROOF RUNNER	120"	49.70
4	4	P-008-398	C PURLIN, 90.5"	90 1/2"	37.53
5	3	P-008-377	C PURLIN SHORT CROSS ROOF RUNNER	36 3/16"	14.99
6	14	P-002-525	ROOF INSIDE PURLIN CLIP		2.77
7	1	PL1-012A	PLATE 3/16" X 6 1/4" X 8 7/8" ASTM A36 STL	8 7/8"	2.77
8	3	1001-0030-0106_1	EM SHEET, 0.75 #9; A1011/A1008 STD/FLT; 4'X8'	96"	140.37
9	113	002-0SG-0007	#12 X 1 1/4" LG., SELF DRILLING SCREW W. WASHER, GALV.		0.02
10	113	002-0FW-Z022	WASHER, FLAT, .3125 X 1.5 O.D., ZINC FENDER		
11	8	002-0BG-0012	BOLT, HH, .500-13 X 1.75, GALV, A325, PT X 1.00	1 3/4"	0.16
12	76	002-0BG-0010	BOLT, HH, .500-13 X 1.50, GALV, A325, PT X 1.00	1 1/2"	0.14
13	168	002-0FW-G002	WASHER, FLAT, .500, GALV, F436		0.03
14	84	002-0LW-G002	WASHER, SPLIT LOCK, .500, GALV		0.014
15	84	002-0NG-0010	NUT, HEX, .500-13, GALV, GR 2H		0.06

SURFACE FINISH <input checked="" type="checkbox"/> UNLESS OTHERWISE SPECIFIED		UNLESS OTHERWISE SPECIFIED DIMENSIONS ARE IN INCHES		APPROVALS	DATE	 <p>ELECTRO MECHANICAL INDUSTRIES, INC. 11230 NEESESHAW DRIVE HOUSTON, TEXAS 77065 1-800-453-0050</p>
MATERIAL	SEE PARTS LIST	TOLERANCES		DRAWN		
THIRD ANGLE PROJECTION		FRACTIONS ± 1/16	ANGLES: FORMED ± 1° ALL OTHERS ± .25°	A.CRUZ	7/3/2025	
NEXT ASSY	USED ON	HOLES: DRILLED OR PUNCHED ± 1/32 BURNED ± 1/32		CHECKER		
APPLICATIONS				ENGINEER/DESIGNER		<p>TITLE: BOLT TOGETHER ICE CANOPY W/ EXPANDED METAL ROOF</p>
						<p>SIZE: B DRAWING NO.: 1001-0030-0106 REV: 0</p>
						<p>SCALE: 1:48 WEIGHT: 1250.8 lbs. SHEET 1 OF 2</p>



1001-0000-0073
PLATFORM

		ELECTRO MECHANICAL INDUSTRIES, INC. 11230 NEESHAW DRIVE HOUSTON, TEXAS 77065 1-800-453-0050	
SIZE	DRAWING NO.	REV	
B	1001-0030-0106	0	
SCALE: 1:24		SHEET 2 OF 2	