

THE INFORMATION CONTAINED IN THIS DRAWING IS THE SOLE PROPERTY OF ELECTRO MECHANICAL INDUSTRIES, INC. ANY REPRODUCTION IN PART OR WHOLE WITHOUT THE WRITTEN PERMISSION OF ELECTRO MECHANICAL IND., IS PROHIBITED.

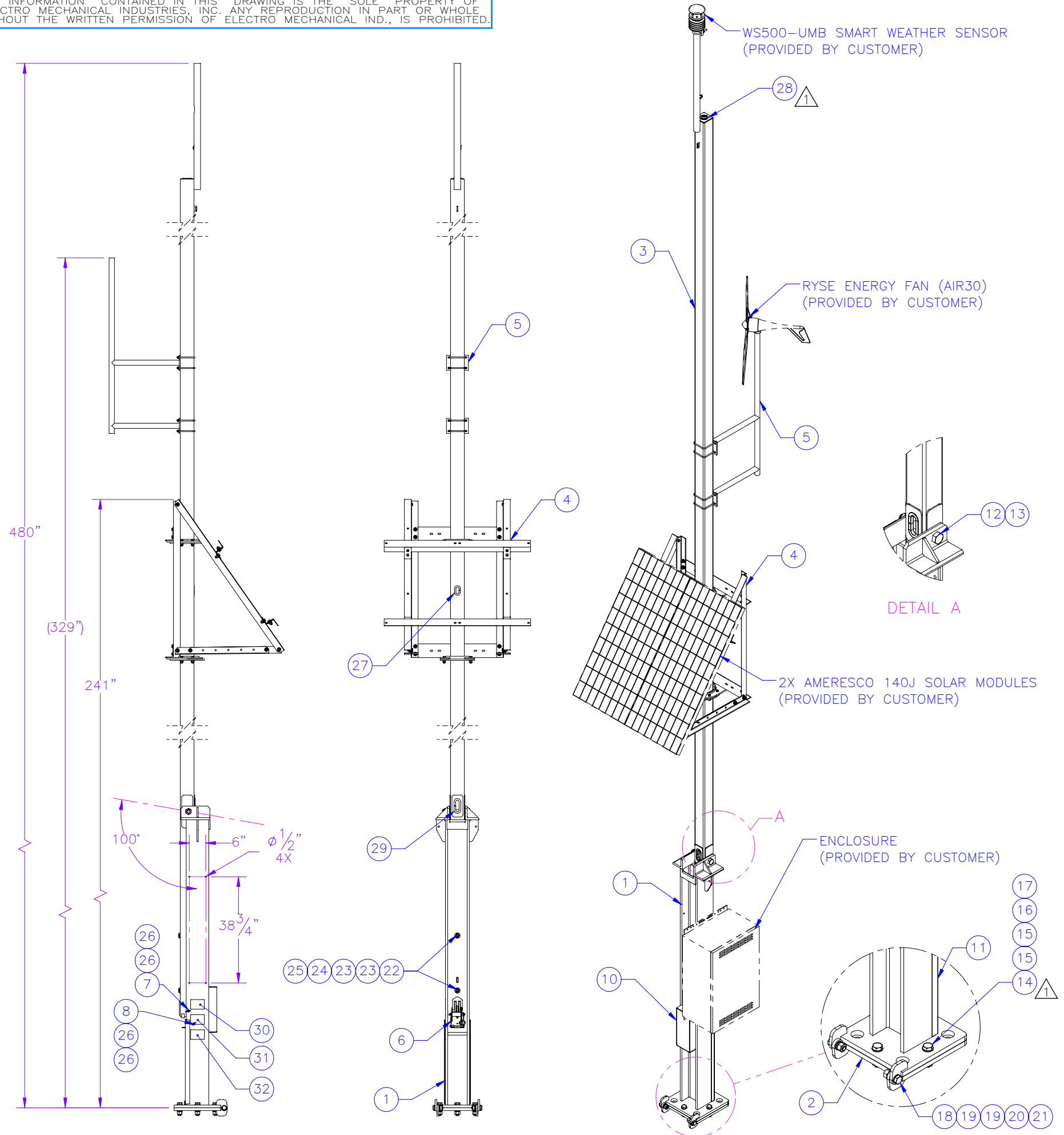
REVISIONS					
REV.	DCN #	DESCRIPTION	DATE	BY	APPROVED
1	01443	CHANGED 1X4 BOLT FROM A325 TO B7, CHANGE HEX NUT TO LOCK NUT, ADD EDGE GUARD	12/09/2025	RSL	FJB

D


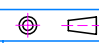
C

B

A



ITEM NO.	QTY REQD	PART NUMBER	DESCRIPTION	LENGTH	WEIGHT
1	1	W-002-927	SUPPORT BASE WELDMENT, SOLAR TILT-UP TOWER		641.3
2	1	400-004-3054-0130	HINGE BASE		81.59
3	1	400-004-3054-0200	MAST ASSEMBLY		580.45
4	1	A-000-814	2 SOLAR MODULE FRAME ASSEMBLY		200.2
5	1	A-000-815	WIND GENERATOR MOUNT ASSEMBLY		
6	1	1002-0050-0005	WINCH KIT (1/4" X 27' WIRE ROPE)		9.7
7	1	400-004-3054-0071	.875" DIA. X 5.75" LG. PIN		0.956
8	1	400-004-5000-0072	.875 DIA. X 2.25 LG. PIN		0.36
9	1	400-004-5000-0080	4" SHEAVE ASSEMBLY		2.37
10	1	400-004-3050-0612	WINCH COVER		8.79
11	1	400-004-5010-0135	FRONT COVER		8.32
12	1	002-0BG-0032	BOLT, HX HD, 1.25-7UNC X 9.00 LG, A325, GALV		3.81
13	1	002-ONG-0020	NUT, HX, ANCO LOCKNUT, 1.25-7UNC, GR 2H, GALV		0.79
14	4	002-0BG-0210	BOLT, HH, 1.00-8 X 4.00, GALV, GR B7, PT X 2.25 4"		1.2844
15	8	002-OFW-G009	WASHER, FLAT, 1.00, GALV, F436		0.10
16	4	002-0LW-G008	WASHER, SPLIT LOCK, 1.00, GALV		0.09
17	4	002-ONG-0000	NUT, ANCO, HEX, 1.00-8, GALV, GR 2H		0.42
18	2	002-0BG-0040	BOLT, HH, .875-9 X 3.00, GALV, A325, PT X 1.50 3"		0.7877
19	4	002-OFW-G008	WASHER, FLAT, .875, GALV, F436		0.08
20	2	002-0LW-G007	WASHER, SPLIT LOCK, .875, GALV		0.06
21	2	002-ONG-0009	NUT, HEX, .875-9, GALV, GR 2H		0.288
22	2	002-0BG-0007	BOLT, HX HD, .75-10UNC X 8.00 LG, A325, GALV		1.16
23	4	002-OFW-G000	WASHER, FLAT, .75 INCH, USS, GALV		0.09
24	2	002-0LW-G003	WASHER, SPLIT LOCK, .75", GALV		0.04
25	2	002-ONG-0002	NUT, HX, .75-10UNC, GR 2H, GALV		0.19
26	4	002-00C-0002	COTTER PIN, .188 DIA. X 1.50 LG, GALV		0.007
27	1	309-000-0001	EDGE GUARD, 3/16", CUT AT 7-1/2" LG.		
28	1	309-000-0001-07	EDGE GUARD, 3/16", 7" LG	7"	0.0
29	1	309-000-0002-12	EDGE GUARD, 1/2", 12" LG.	12"	0.072
30	2	999-999-L001	3.5" x 5" DO NOT CLIMB DECAL		0.01
31	2	999-999-L002	3.5" x 5" PINCH POINT DECAL		0.01
32	1	999-999-L003	3.5" x 5" WINCH RATING DECAL		0.01

SURFACE FINISH <input checked="" type="checkbox"/> UNLESS OTHERWISE SPECIFIED		UNLESS OTHERWISE SPECIFIED DIMENSIONS ARE IN INCHES		APPROVALS		DATE		 ELECTRO MECHANICAL INDUSTRIES, INC. 11230 NEESESHAW DRIVE HOUSTON, TEXAS 77065 1-800-453-0050	
MATERIAL SEE PARTS LIST		TOLERANCES .0 ±.06 .00 ±.015 .000 ±.005 FRACTIONS ± 1/16 ANGLES ±.25° HOLES: DRILLED OR PUNCHED ±1/32 BURNED ±1/32		DRAWN F. BAYEH 5/13/2024		5/13/2024			
THIRD ANGLE PROJECTION 				CHECKER C. SANCHEZ 5/22/2024		5/22/2024		SIZE B DRAWING NO. 1002-0030-0060 REV 1	
NEXT ASSY USED ON APPLICATIONS				ENGINEER C. LEMAN 5/23/2024		5/23/2024		SCALE: 1:80 WEIGHT: 1588.8 lbs. SHEET 1 OF 1	